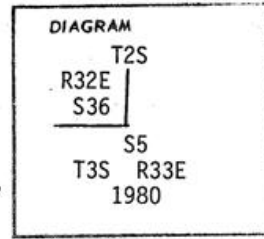


**CERTIFIED RECORD OF LAND CORNER MONUMENTATION**

Index File No. Z-25

**History of original corner establishment:** The original surveyor, David P. Thompson, under GLO Contract No. 106, Aug. 1964 set post for corner to Townships 2 & 3 South, Ranges 32 & 33 E from which: A Pine 24" dia. brs. N30°W, 116 lks dist. A Pine 24" dia. brs. N50°E, 99 lks dist. A Fir 10" dia. brs. S30°E, 175 lks. dist. A Pine 20" dia. brs. S47°W, 213 lks. dist.



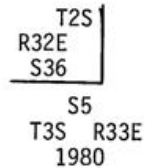
In 1882 Rufus S. Moore resurveyed the north line of T3S, R33E, falling 15.03 chains north of the above set township corner and 47.34 chains west of N.E. Cor. S5, T3S, R33E. He found at Township corner post 4" square marked T2S S31 on N.E. R 33E, S 6 on SE, T3S S1 on SW and S36 on NW faces. He obliterated the marks on the NE & SW faces and changed Sec. 6 to Sec. 5 with 6 notches on each edge. From which: A Pine 24" dia. bears N30°W, 116 lks Dist. Marked "S36 BT". A Pine 24" dia. bears N50°E, 99 lks dist. the marks upon which he obliterated A Fir 10" dia. bears S30°E, 175 lks. dist. marked R33E S6 BT. He changed S6 to S5. A Pine 20" Dia. bears S47°W, 213 lks dist. the marks upon which he obliterated.

**Description of corner evidence found:**

Could find no evidence of the original post.

Found a P. Pine 34" dia. with visible scribing faint "32E S36". A P. Pine 26" dia. with visible scribing "R32E S1 BT". A dead Fir 20" dia. with healed over blaze for S.E. BT. Could find no trace of original NW BT.

**Description of monument and accessories established to perpetuate the original location of this corner** At the point which best fits Record Bearings and distances from original BTs. Set 2½"x30" Galvanized Pipe with Brass Cap Stamped. Set pipe 15" in ground to rock with mound of stone to cap.



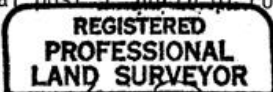
OLD: A P. Pine 34" dia. bears N30°W, 78.1 ft. with visible scribing faint "32E S36".

BEARING TREES A P. Pine 26" dia. bears S47°W, 140.6 ft. with visible scribing "R32E S1 BT".

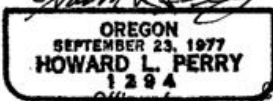
A Dead Fir 20" dia. bears S35°E, 116.9 ft. with healed over blaze.

NEW: A Doug. Fir 14" dia. bears N68°W, 112.2 ft. scribed T2S, R32E, S36BT.

Attached 54-3 and 54-4 signs to all BTs. Attached brass washer stamped LS 1294 to foot blaze of new BTs. Painted blazes and 6" bank around both Bts. red. Attached 54-2 and 54-4 signs to metal post 5' north of corner.



I hereby certify the above corner monument was reestablished as herein described on July 28, 1980.



Witnesses: R. Orton  
L. Huntsman  
D. Allen

County Surveyor \_\_\_\_\_ County of Umatilla  
State of Oregon, I hereby certify that the within instrument was filed in this office for record on the \_\_\_\_\_ day of December, 1980.  
David R. Humblein by Betty Shatto  
(COUNTY OFFICIAL) (DEPUTY)