

OREGON CORNER RESTORATION FORM

Section 29 Township 2S Range 32E
 County Umatilla Date: April 6, 2007

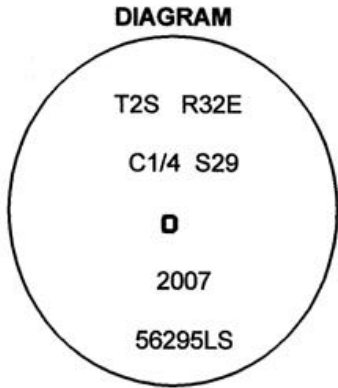
Corner Designation: 2S32T7

Center Quarter corner to section 29, T2S, R32E,
 W.M., Umatilla County, Oregon.

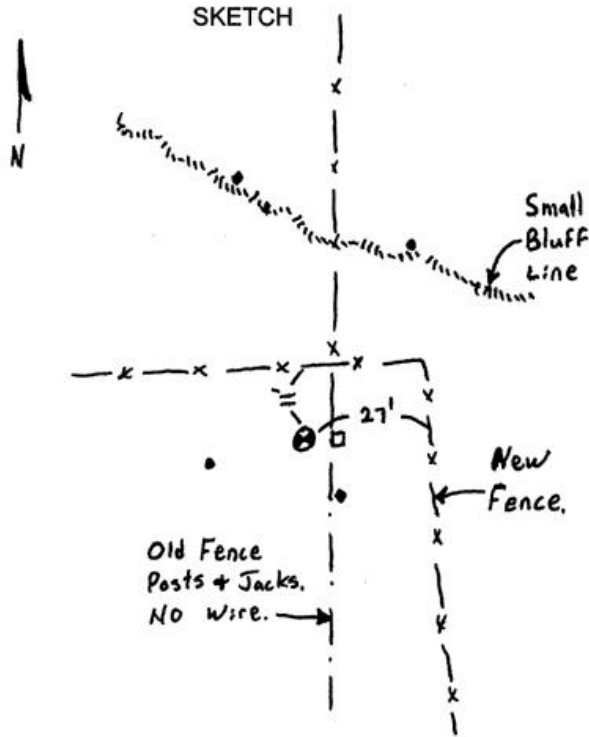
Previous Renewals / Surveys, etc.
 No previous establishment of this corner.

Condition Report Only
 Not found
 Monummented
 Unrecorded
 Surveyed in
 Referenced out

Monument and Accessories found: (condition and source)



- ⊗ = 1" Rebar w/ Al. Cap
- = Rebar Reference
- = Steel Guard Post



MONUMENT (S) AND ACCESSORIES SET (Procedures and Description)

At the calculated corner position I set a 1" x 24" iron rebar driven 24" into the ground to bedrock. I attached a 2" aluminum cap to the rebar and stamped the cap as shown in the diagram above. For references, I set four 5/8" by 20" rebars with 1.25" orange plastic caps stamped WTS and 56295LS as described below:

- an iron rebar bears N28°20'07"E, 79.55 feet in the top of a small rim rock;
- an iron rebar bears N12°55'00"W, 99.59 feet in the top of a small rim rock;
- an iron rebar bears S80°18'30"W, 34.17 feet;
- an iron rebar bears S16°09'35"E, 19.54 feet;

The monument was set and references were tied using a Trimble R7/R8 RTK GPS.

Location and comments

Compass Declination

Surveyors Seal

RECEIVED BY:
Umatilla County Surveyor
 Date: 6-07
 Rec'd By: KK
 No. 07-169-C

Firm / Agency
 Witness Tree Surveying
 Address
 P.O. Box G
 Pilot Rock, Or. 97868
 Party Chief
 Stephen K, Haddock

REGISTERED
 PROFESSIONAL
 LAND SURVEYOR

Stephen K. Haddock

OREGON
 JULY 9, 2001
 STEPHEN K. HADDOCK
 56295LS

RENEWAL DATE 6-30-07