

Form 874-9—Revised May, 1918

U. S. DEPARTMENT OF AGRICULTURE
FOREST SERVICE

Umatilla NATIONAL FOREST

CORNERS OF THE PUBLIC SURVEY

T. 2 N. R. 37 E. W. Mer.

Section 21, 22, 23, and 27 Corner common to Sections

Corner consists of a 8"x10"x10" ~~(100)~~ in place
State condition Good

Dimensions above ground 8"x10"x10" inches.
Sketch grooves, letters, figures, or notches, on proper face or edge.

CARDINAL POSITION

DIAGONAL POSITION

None			
N	W	S	E

	None		
NW	SW	SE	NE

Mound of XXXXXX is located XXXXXX

Pits are located XXXXXXXXXX

Sketch markings of Bearing Trees (or Rocks) in proper box and fill blanks below, giving bearings from Corner to Trees and Distances in Links.

T2N R37E S21	Burned	Burned	
BT			

Species FIR Fir Fir

Diameter 20" 20" 30"

Bearing N12°W N75°E S15°W

Distance 10' 23' 25'

Do you believe this to be a genuine Land Office Corner? Yes

If not, why? _____

P.N. Stephenson

Signature.

A.F.R.

8-10-33

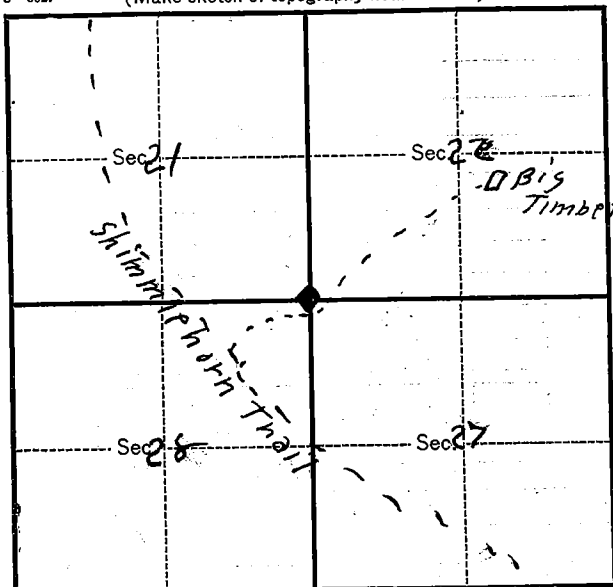
Date.

Title.

T. 2 N. R. 37E. Mer.

8-3027

(Make sketch of topography near Corner.)



Metal Location Poster is on a Fir
 tree 20 inches diameter, on the cast side
 side of trail
 from which this Corner bears S. 13° E.
1/6 chains distant.

Give any further facts which will aid in finding this
 Corner again.

Corner is stone 8"x10"x10"
 about 4 ft east of trail. Witness
 trees for Sec. 22-28 well marked
 but burned over. Trail to Big
 Timber camp 4' south of corner.

RECEIVED
 DEC 13 1933
 GENERAL INVESTIGATION
 UNITED STATES NATIONAL FOREST SERVICE