

Index  
File No. W-5

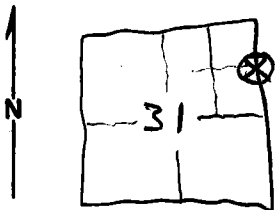
**CORNER RECORD (SEARCH)**  
(Ref. FSM 7151.4)

Tract or Survey No. C Cor. No. W-5

T 2N R. 36E R.D. \_\_\_\_\_ County \_\_\_\_\_

Merid. \_\_\_\_\_ N.F. \_\_\_\_\_ State \_\_\_\_\_

**CORNER DIAGRAM**



**DESCRIBE CORNER MONUMENT FOUND**

Set; Stone in mound of stone.

**DESCRIBE BEARING TREES OR OTHER OFFICIAL ACCESSORIES FOUND**

24" Pine, N48°E, 15' Ks.

**PHOTO IDENTIFICATION DATA**

Photo No. \_\_\_\_\_

Filed At. \_\_\_\_\_

Object Ident. \_\_\_\_\_

Ident. By \_\_\_\_\_

*Signature*

**DESCRIBE CORNER LOCATION RELATIVE TO NEAR-BY FEATURES, ALSO HOW TO REACH CORNER**

Swartz 1896,

**PLANE COORDINATE POSITION DATA**

State \_\_\_\_\_ Zone \_\_\_\_\_

X \_\_\_\_\_

Y \_\_\_\_\_

Estab. By \_\_\_\_\_

*Agency*

Signature

T.G.H.

Title

Division

Headquarters

Date

2-7-79

7100-52-(3/68)

**CORNER RECORD (PERPETUATION)**

**MONUMENT: DESCRIBE NEW MONUMENT SET, OR WORK DONE TO PRESERVE EXISTING MONUMENT**

9

**ACCESSORIES : DESCRIBE NEW BT'S WITNESS OBJECTS ETC. ESTABLISHED, OR WORK DONE TO PRESERVE EXISTING EVIDENCE**

10

Work Done By \_\_\_\_\_ Title \_\_\_\_\_ Date \_\_\_\_\_ State Registration No. or Agency \_\_\_\_\_

Certified Cor. Record Prepared ? Yes No Filed At: \_\_\_\_\_ Date \_\_\_\_\_

11

**REMARKS**

12

Index File No. T. R. M. Tract or Surv. No. Cor. 13  
U.S. G.P.O. 1977-725-576/586