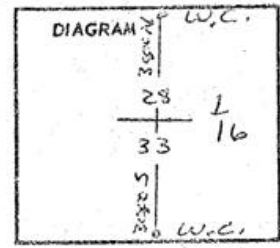


V-16  
H-186

CERTIFIED RECORD OF LAND CORNER MONUMENTATION

Restoration of SE cor of SW 1/4 of SE 1/4 of Sec 28

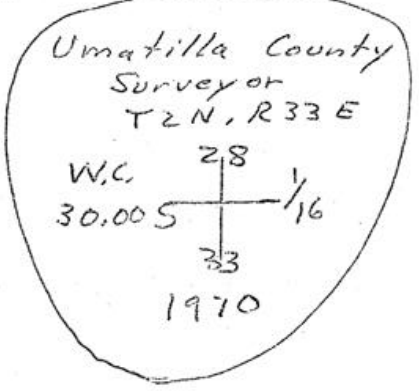
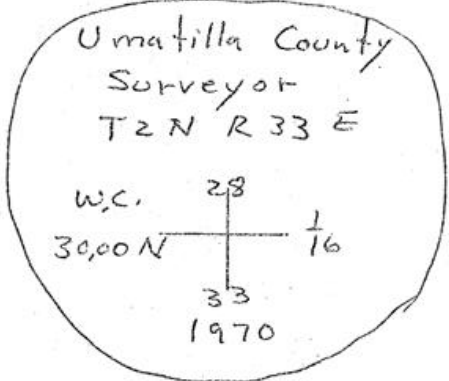
History of original corner establishment: ~~Resurvey~~ Retracement by Indian Affairs in 1917 and they set brass cap.



V-12

Description of corner evidence found: No evidence found

Description of monument and accessories I established to perpetuate the original location of this corner For the cor. I only set a temporary 60 penny spike ~~set~~ in center of graveled County road. I set 2 witness corners. 1" x 36" Galv. pipe with 2 1/2" brass cap securely fastened to the top marked



Office of The County Surveyor County of Umatilla  
State of Oregon, I hereby certify that the within Instrument was filed in this office for record on the 29 day of Sept, 1970, at 10 o'clock a.m., (signed) *Ralph W. Thompson* by *Donald J. Hubler*  
(COUNTY OFFICIAL) (DEPUTY)



H. 186