

**OREGON CORNER RESTORATION FORM**

COUNTY: Umatilla DATE: 01/09/03

CORNER DESIGNATION: P-1, the West One-Quarter Corner to Section 19 only, T2N, R33E, W.M..

PREVIOUS RENEWALS/SURVEYS ETC.: Corner was most recently re-established by L.E. Wilkes, under Special Instructions, Group 29, dated Feb. 20, 1917. Notes state: Point for 1/4 cor. of sec. 19 falls in road. At a point 45 1/2 lks. E. of cor. Set a iron post, 3 ft. long, 2 ins. diam., 24" in the ground for witness cor. to the 1/4 cor. of sec.19 T2N., R33E., with marked brass cap.

The witness corner monument was recovered and tied down on Survey No. 82-50-B. The Wilkes witness monument is now missing.

MONUMENT AND ACCESSORIES FOUND: None. The Wilkes witness corner monument has been destroyed by farming.

MONUMENT MARKING DETAIL:

WC  
30.00 FT  
T2N  
R32E R33E  
| 1/4 S19  
2003  
PLS 1106

MONUMENT SET:

Corner position was determined by proportional measurement using ties and measurements to the corner monuments reported on Survey Nos. 82-50-B and 93-054-C. The corner point falls in Goad Road. At a point N 89°57'29" E., a distance of 30.00 feet from corner point, set a witness corner, a 2 1/2" brass cap on 1 1/4" by 30" galv. iron pipe 30" in the ground. Cap is marked as shown on "Monument Marking Detail".

Accessories:

The East one-quarter corner applying to section 24, T2N., R32E., W.M.. bears S 00°03'08" E., 136.09'.  
A 3/4" brass washer stamped "PLS 1106", nailed 1 foot above ground to the West side of the Northerly pole of a set of 3 BPA power poles, bears S 49 1/2° E., 79.6'. Nailed "bearing object" sign to the power pole.  
Umatilla County Road, "Milepost 3" sign on West side of Goad Road bears S 24 1/2° W., 97.5', measured to the point where the sign post enters the ground.  
A telephone pedestal immediately East of and touching a power transmission pole on the West side of Goad Road bears N 69° W., 51.4'.

LOCATION AND COMMENTS:

Witness corner falls on the East side of Goad Road, North of BPA power transmission lines.

STATE PLANE COORDINATES, OREGON NORTH, NAD 83(91), International Feet:

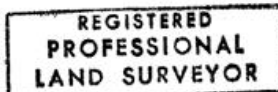
True corner point: N = 723772.11 30.00' Witness Cor. East: N = 723772.79  
E = 8650839.81 E = 8650869.80

FIRM: William R. Wells, PLS  
P.O. Box 1696  
Pendleton, OR 97801

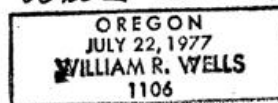
COMPASS DECLINATION: 18° East

Surveyor's Seal

Witnesses: Jason Wells, LSIT  
2N33P1



*William R. Wells*



*renews 6-30-04*