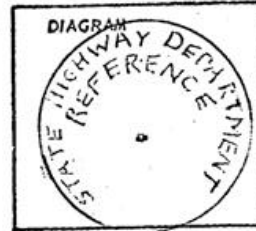


CERTIFIED RECORD OF LAND CORNER MONUMENTATION

History of original corner establishment:

Reservation Boundary # 2.

Cross Mark on Rock



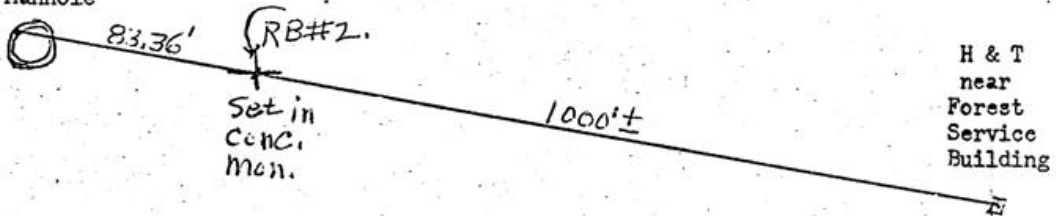
NE 1/4, SE 1/4, Sec 9, T2N, R30E

Description of corner evidence found:

Cross Mark on Rock

Description of monument and accessories I established to perpetuate the original location of this corner

Punch mark in Manhole



Office of COUNTY SURVEYOR County of UMATILLA
State of OREGON, I hereby certify that the within instrument was filed in this office
for record on the 23rd day of JANUARY, 1970, at o'clock m., (signed)
Ralph Thompson by (DEPUTY)