

**OREGON CORNER RESTORATION FORM**

Section 11 Township 2N

Range 32E

County Umatilla Date: 04/14/20

Corner Designation: RB 8 RESET

RESERVATION ADD. MON. AT SE 15TH ST & SE COURT PL.

- Condition Report Only
- Not Found
- Remonumented
- Unrecorded
- Surveyed In
- Referenced Out

**Previous Renewals / Surveys, etc.**

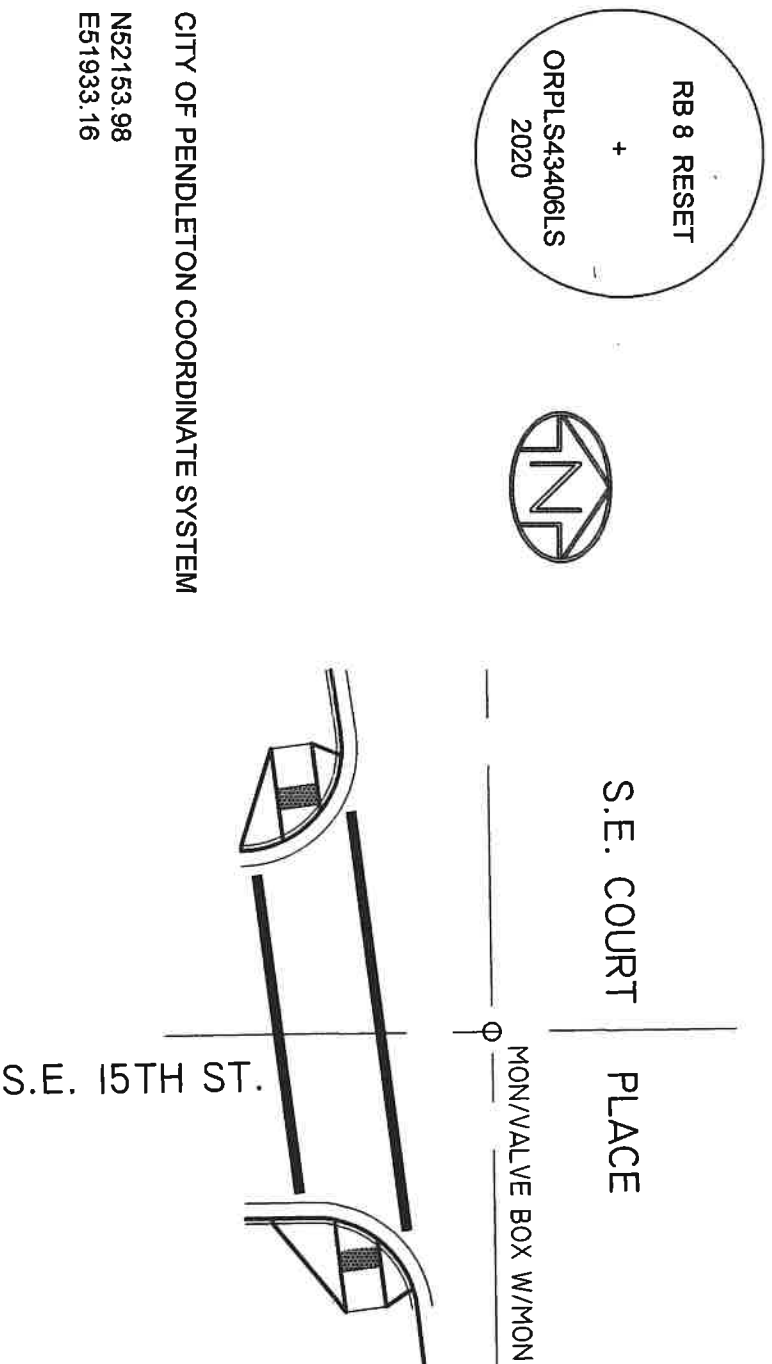
Originally Surveyed as part of the Original Reserve Addition Boundary Monument RB#8. Reset by the City of Pendleton with a 2.5" brass cap in a monument box/valve box.

**Monuments and Accessories Found: (Condition and Source)**

During the course of the survey for the new City of Pendleton Fire Station, done by Anderson Perry & Associates this corner was tied and referenced. As part of the construction staking I tied into this monument and referenced it for part of the construction control. I found a brass cap in a monument/valve box in good condition, but the monument was removed when the intersection was redone and SE 15th Street was paved.

Diagram

Sketch



CITY OF PENDLETON COORDINATE SYSTEM

NS2153.98  
E51933.16

**Monument (s) Set (Procedures and Description)**

2.5" Brass Cap set in concrete inside a monument/valve box, marked as shown above from reference ties done as part of the construction survey work done for the Pendleton Fire Station, and referenced to County Survey 96-139-C, by Wells; and St. Anthony's Replat, County Survey 18-067-B, by Anderson Perry & Assoc.

**References Set:**

None.

**Location and Comments**

At the intersection of SE Court Place and SE 15th Street.

Compass Declination

14.25° E

Surveyors Seal

RECEIVED BY:

Firm / Agency

Date: 4/20/20  
Rec'd By: CT  
No. 20-037-R

Survey One, LLC.  
P. O. Box 382  
Pendleton, OR 97801  
(541) 276-2055

REGISTERED  
PROFESSIONAL  
LAND SURVEYOR

*Robert Douglas English*

OREGON  
JANUARY 11, 2005  
ROBERT DOUGLAS ENGLISH  
43406LS

RENEWAL DATE: 12/31/21