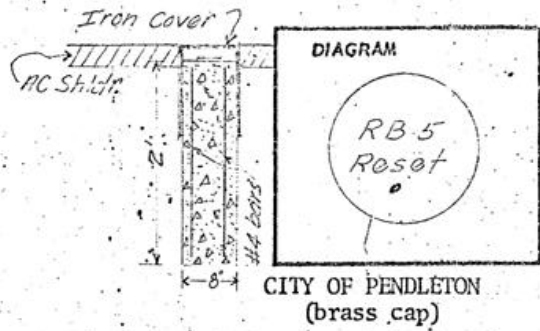


SW 1/4 Sec 10 T 2 N, R 32 E

CERTIFIED RECORD OF LAND CORNER MONUMENTATION

History of original corner establishment:

Reservation Boundary # 5
Chiseled cross on stone monument.

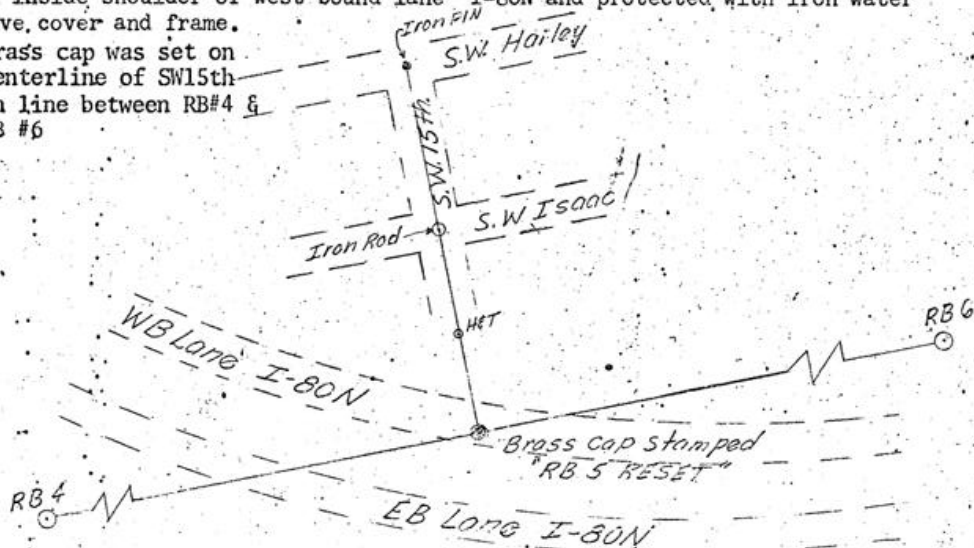


Description of corner evidence found:

Chiseled cross on stone monument which appeared to be Disturbed - monument tipped.

Description of monument and accessories established to perpetuate the original location of this corner City limit monument reset as per diagram below with brass cap set in concrete and stamped "R B 5 Reset". Monument is located on inside shoulder of west bound lane I-80N and protected with iron water valve cover and frame.

Brass cap was set on centerline of SW15th on line between RB#4 & RB #6



Office of COUNTY SURVEYOR County of UMATILLA
 State of OREGON, I hereby certify that the within instrument was filed in this office
 for record on the 5 day of MARCH, 1970, at o'clock m., (signed)
Ralph Thompson by
 (COUNTY OFFICIAL) (DEPUTY)



Q-204