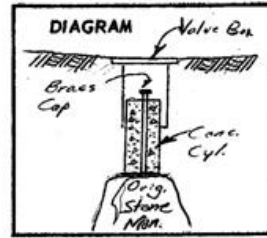


CERTIFIED RECORD OF LAND CORNER MONUMENTATION

Submitted by City Engineer's Office
 City Engineer: *[Signature]*
 History of original corner establishment:
 Reservation Addition to the City of Pendleton
 Boundary Monument No. 3
 Stone with "x" and Marked "R. B. No. 3"
T2N, R33, Sec 10

Pendleton, Oregon



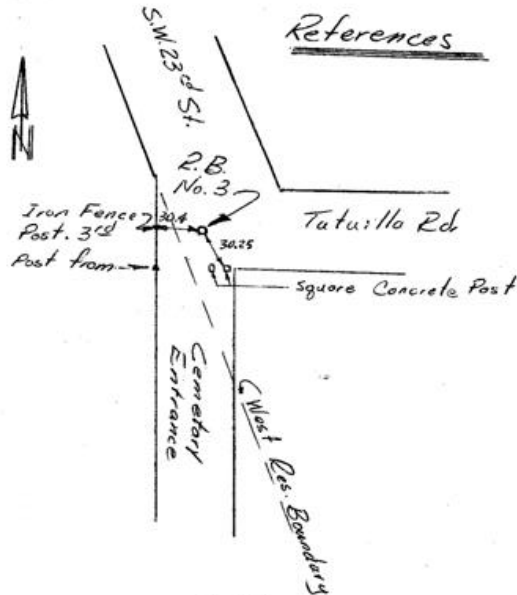
Description of corner evidence found:
 Found axle flush with ground from old references. Re referenced axle, Dug 3' - 4' and found Original Stone Marked "R. B. No. 3" and "x". Checked Stone with references made to axle; agreed.

Replaced axle with Brass Cap Mon. in Valve Box. Brass Cap Mon. stamped R. B. No. 3

Description of monument and accessories I established to perpetuate the original location of this corner

Our purpose was to see whether or not a stone did exist at the location of R. B. Mon. No. 3.

We did not make any measurements to see how it agreed with other R. B. Mons.



Office of County Surveyor County of Umatilla
 State of Ore., I hereby certify that the within instrument was filed in this office
 for record on the 18 day of Sept., 1966, at 11:50 o'clock A.m., (signed)
Ralph C. Thompson by _____
 (COUNTY OFFICIAL) (DEPUTY)

Q-292