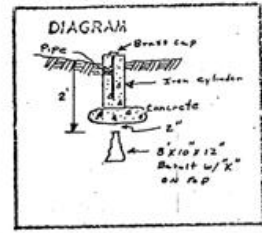


CERTIFIED RECORD OF LAND CORNER MONUMENTATION

Center of Sec. 16, T.2 N.R. 32 E.W.M

History of original corner establishment:

UNKNOWN; The stone is shown on many of the surveys done in the area

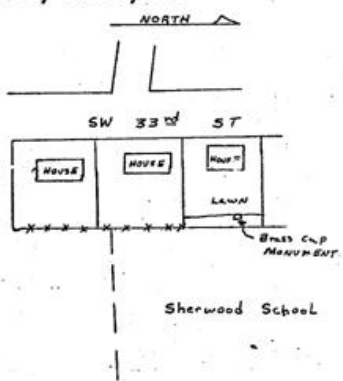


Description of corner evidence found:

A basalt stone approx. 8" x 16" X 12" with a "X" on top was found about 2 feet below the surface of the ground

Description of monument and accessories established to perpetuate the original location of this corner

The "X" was referenced and the stone covered with approx. 2" of dirt. Then a concrete monument was poured with a brass cap for the surface mark. The surface section was poured inside a cast iron cylinder. The brass cap is a standard Umatilla County Surveyors brass cap stamped "Center Section 16" and punched for true position from the references.



SUBMITTED BY CITY ENGINEERING DEPT. Pendleton, Oregon

James L. Chaffee
CITY ENGINEER



County Surveyor County of Umatilla
 Oregon, I hereby certify that the within instrument was read to the office
 on the 6 day of March 1970 at 7 o'clock in the PM
Ralph P. Thompson
 COUNTY CLERK