

OREGON CORNER RESTORATION FORM

COUNTY: Umatilla DATE: 03/15/06

CORNER DESIGNATION: 2N31, E-5, The Northwest Corner of Section 8.

PREVIOUS RENEWALS/SURVEYS ETC.: Corner established by Josiah A. Burnett, under Contract No. 92, dated September 12, 1860. Record states: Set a post for corner to Secs. 5, 6, 7 & 8: drove charred stake and raised mound with trench, as per instructions. John Kimbrell, in Survey recorded in Book 1, Page 348, recovers this corner "at the intersection of wire fences, N & S and East".

MONUMENT AND ACCESSORIES FOUND: None. Corner area now falls in a wheat field. Searched for remains of wire fences North, South and East but only found indications of fence scab area South of corner area.

MONUMENT MARKING DETAIL:

T2N R31E
S6 | S5
S7 | S8
2006
PLS 1106

MONUMENT SET:

I reestablished corner as follows: For departure, I held a line extended North from the reestablished East one-quarter corner of Section 7, through the position of a old roll of fence wire found 120 feet+-, South of corner, to the corner point. For latitude, I held the record proportioned latitude between the reestablished East one-quarter corners of Sections 6 and 7. At reestablished corner position, set a 2 3/8" brass cap on 1 1/4" x 30" galvanized iron pipe with cap 20" below ground level in a farmed wheat field. Cap marked as shown in monument marking detail.

From which:

A silver Deep-1 magnet buried 20" below ground bears North 60° East, 33.9 feet.

A 5/8" x 24" iron rebar with 1 1/4" yellow plastic cap stamped "OPLS 1106 WAPLS 17372" in unfarmed scab area bears South 11° West, 81.3 feet.

A 5/8" x 24" iron rebar with 1 1/4" yellow plastic cap stamped "OPLS 1106 WAPLS 17372" in unfarmed scab area bears South 57° West, 80.2 feet. Set steel fence post with witness sign attached, by this accessory.

An orange Deep-1 magnet buried 20" below ground bears North 38° West, 39.7 feet.

Attached bearing object signs to rebar accessories and buried bearing object signs with magnets.

LOCATION AND COMMENTS: Corner is located in a wheat field 80+- feet North of a unfarmed scab area.

OREGON STATE PLANE COORDINATE, North Zone, NAD 83(91), International Feet:

N = 735802.83
E = 8592126.01

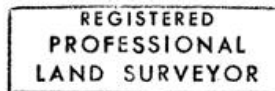
FIRM: William R. Wells, PLS
P.O. Box 1696
Pendleton, OR 97801

COMPASS DECLINATION: 18° East

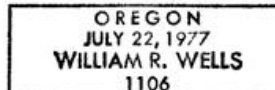
Witnesses: Jason Wells, LSIT

/2N31E5

Surveyor's Seal



William R. Wells



renews 6-30-08