

# OREGON CORNER RESTORATION FORM

SECTION 3 & 2 TOWNSHIP 1 NORTH RANGE 29 EAST

A-17

COUNTY : UMATILLA

DATE: JUNE 2007

CORNER DESIGNATION

SECTION CORNER  
CLOSING CORNER

— CONDITION REPORT ONLY

NOT FOUND

— RENEWED

— UNCOVERED

SURVEYED IN

REFERENCED

PREVIOUS RENEWALS / SURVEYS, ETC.

ORIGINALLY SURVEYED IN 1858 BY THOMPSON UNDER CONTRACT #79. HE SET A POST IN A MOUND OF EARTH.

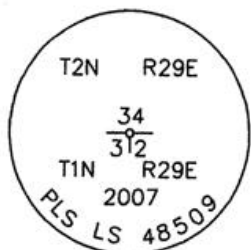
SURVEYED IN 1859 BY THOMPSON UNDER CONTRACT #83. HE SET A POST IN A MOUND OF EARTH.

SURVEYED IN 1860 BY CARTEE UNDER CONTRACT #88. HE SET A POST IN A MOUND OF EARTH.

MONUMENTS AND ACCESSORIES FOUND: CONDITION AND SOURCE

NONE

MONUMENT DETAIL

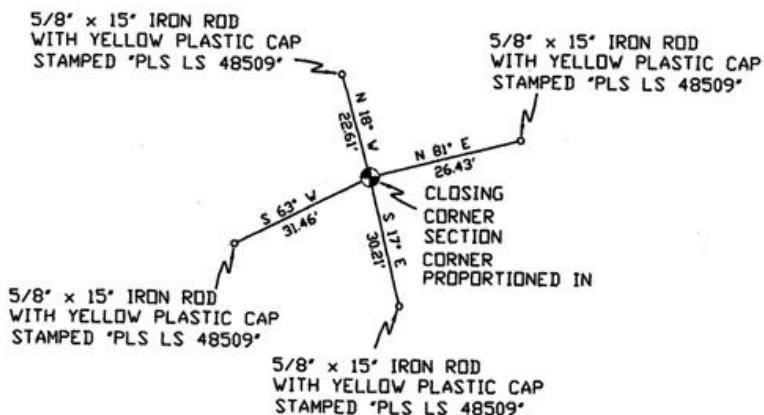


NAD 83/91  
OREGON STATE PLANE  
INTERNATIONAL FEET

708676.9636  
8544086.0329



SKETCH



MONUMENT SET ( PROCEDURES AND DESCRIPTION )

SET 2 3/8" BRASS CAP WITH A ± 2' DIA. ROCK COLLAR ± 6" HIGH  
SINGLE PROPORTIONED IN FROM FND WOOD POST MARKING THE NW CORNER OF SECTION 3 AND THE FOUND ROCK MOUND WITH WOOD POST MARKING THE N 1/4 CORNER OF SECTION 1.

NEW ACCESSORIES FROM WHICH

- A 5/8" x 15" IRON ROD WITH A PLASTIC CAP STAMPED "PLS LS 48509" LIES N 18° W, 22.61 FEET.
- A 5/8" x 15" IRON ROD WITH A PLASTIC CAP STAMPED "PLS LS 48509" LIES N 81° E, 26.43 FEET.
- A 5/8" x 15" IRON ROD WITH A PLASTIC CAP STAMPED "PLS LS 48509" LIES S 17° E, 30.21 FEET.
- A 5/8" x 15" IRON ROD WITH A PLASTIC CAP STAMPED "PLS LS 48509" LIES S 63° W, 31.46 FEET.

LOCATION AND COMMENTS

FROM INTERSECTION OF ALKALI CANYON WITH NORTH BOUNDARY OF TOWNSHIP 1 NORTH, RANGE 29 EAST W.M. GO WEST ± 1.4 MILES TO CORNER.

COMPASS DEC.

17° EAST

FIRM/AGENCY

PRIMM LAND SURVEYING  
1340 N.E. 4TH STREET  
P.O. BOX 1322  
HERMISTON, OREGON 97838

PARTY CHIEF

KEITH P. PRIMM

NOTES

WITNESS

CODY L. HANSEN

SURVEYOR'S SEAL

REGISTERED  
PROFESSIONAL  
LAND SURVEYOR

*Brit L. Primm*  
OREGON  
JULY 13, 1999  
BRIT L. PRIMM  
48509

EXPIRATION DATE: 31 JAN 08

07-260-C