

**OREGON CORNER RESTORATION FORM**

T2N R27E Z1

Section 31, Township 2N, Range 27E,  
County Morrow, Date January 31, 2005.

- Condition Report
- Not Found
- Remonumented
- Unrecorded
- Surveyed in
- Referenced out

Township corner common to Townships 1 and 2 North  
Ranges 26 and 27 East, W.M., Morrow County, Oregon.

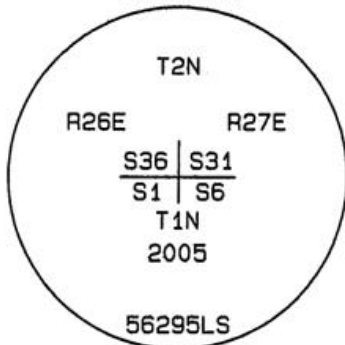
Previous Renewals / Surveys, etc.

The corner was originally set by Ebenezer Haft under Contract No. 93 dated  
September 11, 1860. His record Reads: Set post for corner to Townships 1 and 2  
North Ranges 26 and 27 East in mound with trench and pits and deposited 1 pint  
charcoal as per instructions.

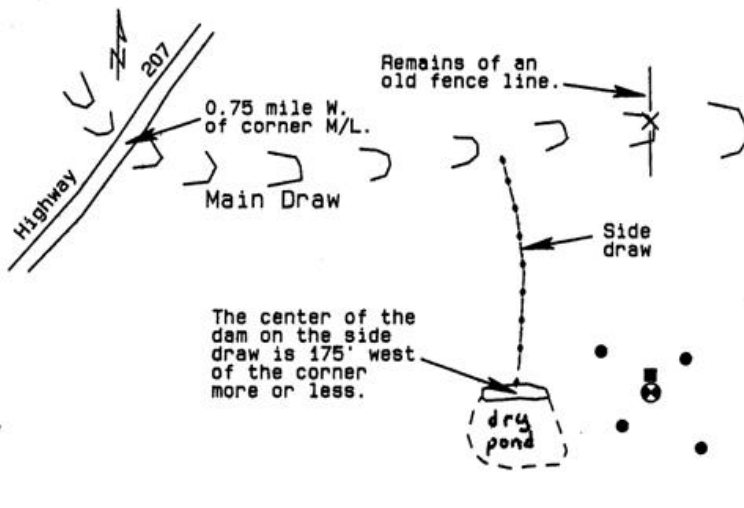
Monument and accessories found: (Condition and source)

None. This position falls in a farmed field that has been farmed for many years.

DIAGRAM



SKETCH



Monument and accessories set: (Procedures and description)

At the proportionate point I set a 1/4" x 2" PK nail with a 1 1/2" brass washer  
attached into the bedrock. The washer is stamped WTS and 56295LS. Over this I set  
a 2 3/8" x 30" galvanized iron pipe with a 2 3/8" brass cap stamped as shown above.  
The cap extends approximately 3" above the surface of the ground. I set a railroad  
tie guard post approximately 2 ft. north of the post with a monument sign attached.

For references I set four 5/8" x 24" iron rebars with 1.25" orange plastic caps  
attached stamped WTS and 56295LS:

an iron rebar bears N38°19'00"E 27.28 feet approximately 18" below the surface;  
an iron rebar bears N49°35'17"W 42.04 feet approximately 18" below the surface;  
an iron rebar bears S37°46'10"W 27.06 feet approximately 18" below the surface;  
an iron rebar bears S52°48'54"E 42.59 feet approximately 18" below the surface;  
The monument and references were tied with a Trimble R7/R8 GPS system using  
static surveying procedures. Bearings and distances are grid.

Location and Comments  
SPC Oregon North, NAD 83-91  
Northing = 707,565.72 ift  
Easting = 8,458,488.19 ift

Compass Declination

Surveyor's Seal

Witnessed By:  
RECEIVED BY:  
Umatilla County Surveyor  
Date: 5-05  
Rec'd By: KK  
No. 05-111-C

Firm / Agency  
Witness Tree Surveying  
P.O. Box G  
Pilot Rock, OR 97868  
Party Chief  
Stephen K. Haddock, PLS

REGISTERED  
PROFESSIONAL  
LAND SURVEYOR

*Stephen K. Haddock*  
OREGON  
JULY 9, 2001  
STEPHEN K. HADDOCK  
56295LS

RENEWAL DATE 6-30-05