

Form 874-9—Revised May, 1918

Copy

U. S. Department of Agriculture
FOREST SERVICE

Umatilla NATIONAL FOREST

CORNERS OF THE PUBLIC SURVEY

T. 15 R. 36-37 E W. Mer.

Corner common to Sections
1, 12, 6, and

Corner consists of a fir 8" diam. (not) in place
State condition good

Dimensions above ground _____ inches.

Sketch grooves, letters, figures, or notches, on proper face or edge.

CARDINAL POSITION

DIAGONAL POSITION

	Blazed on four sides						
	Blazes grown over						
N	W	S	E	NW	SW	SE	NE

Mound of _____ is located _____

Pits are located _____

Sketch markings of Bearing Trees (or Rocks) in proper box and fill blanks below, giving bearings from Corner to Trees and Distances in Links.

Along line	T 15 R 36 E 56	T 15 R 36 E 51	T 15 S 6 R 37 E	T 12 37 E 27	Along L.P. Dead
	BT	BT	BT	BT	

Species	<u>LP</u>	<u>LP</u>	<u>LP dead</u>	<u>LP down</u>
Diameter	<u>12"</u>	<u>11"</u>	<u>6"</u>	<u>6"</u>
Bearing	<u>S 65 W</u>	<u>N 15 W</u>	<u>N 30 E</u>	<u>S 80 E</u>
Distance	<u>8'</u>	<u>14'</u>	<u>3'</u>	<u>5' to butt</u>

Do you believe this to be a genuine Land Office Corner? Yes

If not, why? Marking on trees evidently all mixed up. Line of blazes going West so this is evidently corner indicated above

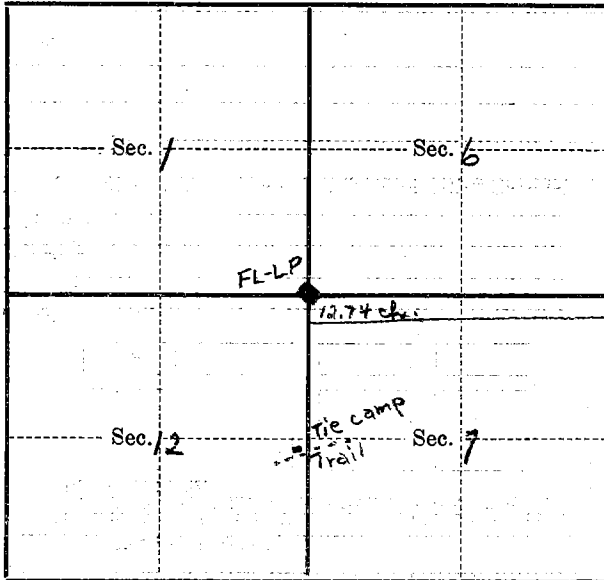
1/s/ Bernard Lee
(Signature)

Aug. 1931
(Date)

J. P. B.
(Title)

T. _____ R. _____ Mer.

(Make sketch of topography near Corner)



Metal Location Poster is on a _____
tree _____ inches diameter, on the _____
side of _____
from which this Corner bears _____
_____ chains distant.

Give any further facts which will aid in finding this
Corner again.

*1/2 mile north from 1/4 corner
located just east of spring at
Tie camp. Cruiser's sign has
been placed on trail where
section line crosses about chain
east of old cabin and can be
found easily.*

U. S. DEPARTMENT OF AGRICULTURE
FOREST SERVICE

Umatilla NATIONAL FOREST

CORNERS OF THE PUBLIC SURVEY

T. *1 S* R. *36 E* *W* Mer.
Section Corner common to Sections

1 and *12*

DESCRIPTION OF CORNER

Corner consists of a *Tree - 10" White Fir*

Dimension above ground _____ inches.
Sketch grooves, letters, figures, or notches, on proper face or edge.

CARDINAL POSITION

DIAGONAL POSITION

<i>Blazed</i>			
N	W	S	E

NW	SW	SE	NE

Mound of _____ is located _____

_____ Pits are located _____

Sketch markings of Bearing Trees (or Rocks) in proper box and fill blanks below, giving bearings from Corner to Trees and Distances in Links.

<i>T1S</i>
<i>R36E</i>
<i>51</i>
<i>BT</i>

<i>T1S</i>
<i>R36E</i>
<i>56</i>
<i>BT</i>

Species *LP* *LP very leaning against*
Diameter *10"* *12" other trees*
Bearing _____
Distance _____

Do you believe this to be a genuine Land Office Corner? *yes*

If not, why? _____

Donald E. Finnell
Signature

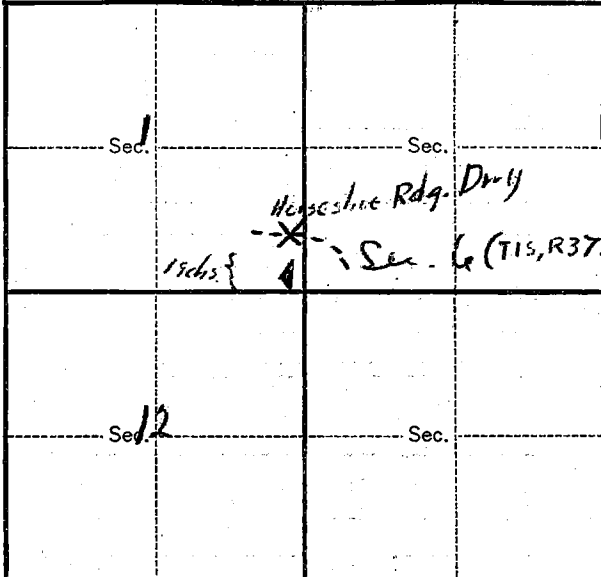
8/18/39
Date

Dist. For Ranger
Title

T. 15 R. 36 E W. Mer.

8-3027

(Make sketch of topography near Corner.)



Metal Location Poster is on a _____
tree _____ inches diameter, on the _____
side of _____
from which this Corner bears _____
_____ chains distant.

Give any further facts which will aid in finding this
Corner again.

*Section line board +
marker tag on driveway, X on
tree + 4 tally marks,
19 chs. N of corner*

FOREST SERVICE

Umatilla National Forest
PENDLETON, OREGON

AUG 24 1939

RECEIVED

Index
File No. E-25

CORNER RECORD (SEARCH)

(Ref. FSM 7151.4)

Tract or
Survey No. _____ Cor. No. _____

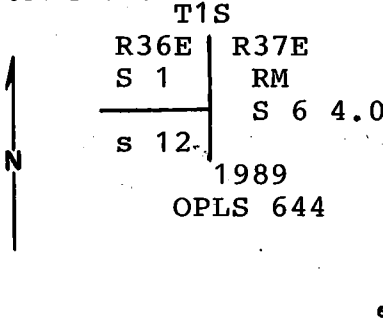
T 1S R. 36E

R.D. Walla Walla County Umatilla

Merid. Willamette

N.F. Umatilla State Oregon

CORNER DIAGRAM



DESCRIBE CORNER MONUMENT FOUND

20" white fir corner tree, from which, a 2½" aluminum pipe reference monument protruding 1" out of ground, bears North - 4.0 feet, marked as shown. See Map of Survey no. 89-101-B.

DESCRIBE BEARING TREES OR OTHER OFFICIAL ACCESSORIES FOUND

An 18" white fir stump, uprooted, bears N83°E (m/l)-12 feet, healed blaze. A 22" white fir stump, uprooted, bears S25°W (m/l)-23 feet, healed blaze. A 12" dead lodge pole pine bears N20°W-14.2 feet, visible scribing, 13.8 feet to face.

PHOTO IDENTIFICATION DATA

Photo No. _____
Filed At. _____
Object Ident. _____
Ident. By _____
Signature

DESCRIBE CORNER LOCATION RELATIVE TO NEAR-BY FEATURES, ALSO HOW TO REACH CORNER

Corner is on flat clearcut area on top of Wilbur Mountain. Follow posting South from crossing on USFS road no. 3113-035.

PLANE COORDINATE POSITION DATA

State _____ Zone _____
X _____
Y _____
Estab. By _____
Agency

Signature Walter R. Wall Title PLS Division _____ Headquarters PENDLETON Date 8/2/94 FS-7100-52 (3/68)

CORNER RECORD (PERPETUATION)

MONUMENT : DESCRIBE NEW MONUMENT SET, OR WORK DONE TO PRESERVE EXISTING MONUMENT

5.0' North of corner tree set steel fence post with 54-2 and 54-9 signs attached, 1.0 feet North of reference monument.

ACCESSORIES : DESCRIBE NEW BT'S WITNESS OBJECTS ETC. ESTABLISHED, OR WORK DONE TO PRESERVE EXISTING EVIDENCE

A 5/8" x 30" iron pin with yellow plastic cap bears N58°W-20.7 feet.
A 5/8" x 30" iron pin with yellow plastic cap bears S17°W-17.8 feet.
A 5/8" x 30" iron pin with yellow plastic cap bears S65°W-27.5 feet.
All iron pins have 54-3 signs attached and steel fence posts near with 54-9 sign attached. Bearings and distances to corner.

Work Done By WR Wells Title PLS Date _____ State Registration No. PLS 1106
or Agency _____

Certified Cor. Record Prepared ? Yes No _____ Filed At: MATILLA COUNTY SURVEYOR'S OFFICE Date 12/94

REMARKS

This corner was maintained as part of a USFS contract.

Index File No.	T.	R.	M.	Tract or Surv. No.	Cor.
E25	1S	36E	Willamette		

Index
File No. E-25
T 1S R.36E
Merid. WILLAMETTE

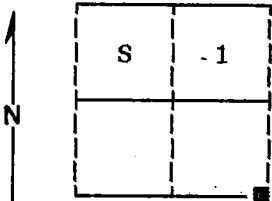
CORNER RECORD (SEARCH)

(Ref. FSM 7151.4)

R.D. WALLA WALLA County UMATILLA
N.F. UMATILLA State OREGON

Tract or
Survey No. _____
Cor.
No. _____

CORNER DIAGRAM



DESCRIBE CORNER MONUMENT FOUND

Found a 21 inch diameter White Fir with blazes visible on 4 sides.

DESCRIBE BEARING TREES OR OTHER OFFICIAL ACCESSORIES FOUND

Found 16" White Fir N80°E 12.0 ft. live & vigorous, blaze evident. Found 22" White Fir S32°W 22.5 ft. live & vigorous with blaze evident. Found 14" Lodgepole Pine S66°W 10.0 ft. dead & down with scribes visible. Found 16" Lodgepole Pine N19°W 14.0 ft. live but sick with scribes visible. Found a steel fence post 5 ft. South of corner tree with Property Boundary and Attention signs attached.

PHOTO IDENTIFICATION DATA

Photo No. 12 616140A 787-213
Filed At. Ranger Office
Object Ident. Corner Tree
Ident. By D.I. Griffith
Signature

DESCRIBE CORNER LOCATION RELATIVE TO NEAR-BY FEATURES, ALSO HOW TO REACH CORNER

Corner falls on top of ridge in timbered flat, approximately 250 feet West of the 035 road.

PLANE COORDINATE POSITION DATA

State _____ Zone _____
X _____
Y _____
Estab. By _____

Signature

Title _____ Division _____ Headquarters _____
Surveyor

Date 8-24-89 FS-7100-52 (3/68)

1
2
3
4
5

CORNER RECORD (PERPETUATION)

MONUMENT: DESCRIBE NEW MONUMENT SET, OR WORK DONE TO PRESERVE EXISTING MONUMENT

Set a 2½"x30" aluminum pipe with aluminum cap marked as shown:
Pipe is set 28 inches in the ground.

Monument set is a **REFERENCE MONUMENT**, set North, 4.0 feet
from the center of the existing original corner tree.

	T1S		
R36E		R37E	
S 1		RM	
<hr/>		S 6	
S 12			4.0
			1989
			OPLS 644

ACCESSORIES : DESCRIBE NEW BT's WITNESS OBJECTS ETC. ESTABLISHED, OR WORK DONE TO PRESERVE EXISTING EVIDENCE

Painted a 6 inch red band around all bearing trees and attached 54-3 and 54-9 signs.
Set a steel fence post approximately 5 feet North with 54-9 sign attached.

Work Done By D.I. Griffith Title Surveyor Date 7-31-89 State Registration No. OPLS 644
or Agency

Certified Cor. Record Prepared? Yes No Filed At: Umatilla Co. Surveyor's Office Date 9-89

REMARKS

Witness: Rick Robinson

Index File No. E-25 T. 1S R. 36E WM. Tract or Surv. No.

Cor.

Index File No. E-25

CORNER RECORD (SEARCH)

(Ref. FSM 7151.4)

Tract or Survey No. E 25

Cor. No. 29 Sec 29

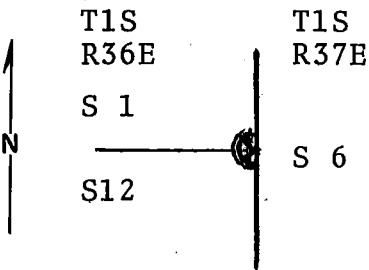
T 1 S R 36 E

R.D. Pendleton County Umatilla

Merid. Willamette

N.F. Umatilla State Oregon

CORNER DIAGRAM



DESCRIBE CORNER MONUMENT FOUND

Remonumented 1972.

Found 18" fir, original corner tree, with healed over blaze visible on 4 sides, from which:

DESCRIBE BEARING TREES OR OTHER OFFICIAL ACCESSORIES FOUND

Found a rotten lodgepole pine, no scribing visible, bearing S80°E 5 ft. from corner tree.
 Found a 6" lodgepole pine, dead & down, with scribing visible, bearing approx. N45°E. 3 ft. from corner tree.
 Found a 14" lodgepole pine, dead & down, with scribing visible, bearing approx. S66°W 10 ft. from corner tree.

DESCRIBE CORNER LOCATION RELATIVE TO NEAR-BY FEATURES, ALSO HOW TO REACH CORNER

Found a 14" lodgepole pine, live in good condition, bearing N19°W 14 ft. from corner tree.

PHOTO IDENTIFICATION DATA

Photo No. _____
 Filed At. _____
 Object Ident. _____
 Ident. By _____

Signature

PLANE COORDINATE POSITION DATA

State _____ Zone _____
 X _____
 Y _____
 Estab. By _____

Agency

Signature

Title

Division

Headquarters

Date

7100-52 (3/68)



CORNER RECORD (PERPETUATION)

MONUMENT : DESCRIBE NEW MONUMENT SET, OR WORK DONE TO PRESERVE EXISTING MONUMENT

No brass cap monument set. Original corner tree is in good condition.
Took new bearing trees:

ACCESSORIES : DESCRIBE NEW BT'S WITNESS OBJECTS ETC. ESTABLISHED, OR WORK DONE TO PRESERVE EXISTING EVIDENCE

A fir 14" dia. bears N80°E 12 ft. dist. marked T1S R37E S6 BT.
A fir 20" dia. bears S32°W 22.5 ft. dist. marked T1S R36E S12 BT.
Distances taken to a brass washer in the blaze of each tree.
Set a steel fence post approx. 5 ft. South from corner position with
Forest Boundary sign attached.
Used steel tape and magnetic compass with declination = 20° E.

Work Done By D. M. Ferguson Title Land Surveyor Date 7/12/68 State Registration No. 848
or Agency

Certified Cor. Record Prepared ? Yes No Filed At: Umatilla Co. Courthouse Date 11/16/72

REMARKS