

Index  
File No. C-21

**CORNER RECORD (SEARCH)**

(Ref. FSM 7151.4)

Tract or Survey No. \_\_\_\_\_ Cor. No. \_\_\_\_\_

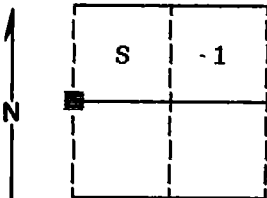
T 1S \_\_\_\_\_ R36E \_\_\_\_\_

R.D. WALLA WALLA \_\_\_\_\_ County UMATILLA \_\_\_\_\_

Merid. WILLAMETTE \_\_\_\_\_

N.F. UMATILLA \_\_\_\_\_ State OREGON \_\_\_\_\_

**CORNER DIAGRAM**



**DESCRIBE CORNER MONUMENT FOUND**

Found 3 inch brass cap monument marked as shown.

T1S R36E

S 2 | S 1

1972

PLS 848

**DESCRIBE BEARING TREES OR OTHER OFFICIAL ACCESSORIES FOUND**

Found a 28 inch diameter Ponderosa Pine N50°W, 112 lks, live but sickly with scribes visible.

Found a 21 inch diameter Douglas Fir S12°E, 11.4 feet, live and vigorous with blaze evident.

**DESCRIBE CORNER LOCATION RELATIVE TO NEAR-BY FEATURES, ALSO HOW TO REACH CORNER**

Corner falls on timbered steep West slope at West edge of bald face, approximately 1200 feet West of the 050 road.

**PHOTO IDENTIFICATION DATA**

12 616140A 787-55

Photo No. \_\_\_\_\_

Filed At. Ranger Office

Object Ident. Bearing Tree

Ident. By D.I. Griffith

*Signature*

**PLANE COORDINATE POSITION DATA**

State \_\_\_\_\_ Zone \_\_\_\_\_

X \_\_\_\_\_

Y \_\_\_\_\_

Estab. By \_\_\_\_\_

*Signature*  
*Agency*

Title  
**Surveyor**

Division

Headquarters

Date

FS-7100-52 (3/68)

8-24-89

CORNER RECORD (PERPETUATION)

MONUMENT: DESCRIBE NEW MONUMENT SET, OR WORK DONE TO PRESERVE EXISTING MONUMENT

None

ACCESSORIES : DESCRIBE NEW BT'S WITNESS OBJECTS ETC. ESTABLISHED, OR WORK DONE TO PRESERVE EXISTING EVIDENCE

New BT:

A 12 inch diameter Douglas Fir bears N83°W, 10.05 feet marked ¼ S2 BT

Painted a 6 inch red band around all bearing trees and attached 54-3 and 54-9 signs.

Set a steel fence post approximately 5 feet North with 54-2 and 54-9 signs attached.

Work Done By D. I. Griffith Title Surveyor Date 8-7-89 State Registration No. OPLS 644  
or Agency

Certified Cor. Record Prepared ? Yes  No Filed At: Umatilla Co. Surveyor's Office Date 9-89

REMARKS


Witnesses: Jeff Petersen and Rick Robinson

Index File No. C-21 T. 1S R. 36E W.M. Tract or Surv. No. Cor.

Index C-21  
File No. \_\_\_\_\_

CORNER RECORD (SEARCH)

Tract or Survey No. C 21

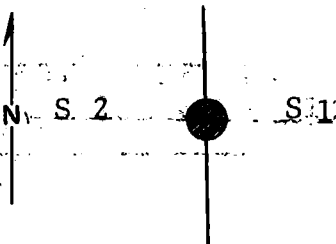
Cor. No. 1/4 

T 1 S 36 E R.D. pendleton County Umatilla

Merid. Willamette N.F. Umatilla State Oregon

CORNER DIAGRAM

T1S R36E



DESCRIBE CORNER MONUMENT FOUND

Brass cap set summer 1972. See reverse side.

2

DESCRIBE BEARING TREES OR OTHER OFFICIAL ACCESSORIES FOUND

Found 26" pine live in good condition with scribing visible, established corner position S50°E 74 ft. dist. from BT.

3

PHOTO IDENTIFICATION DATA

Photo No. \_\_\_\_\_  
Filed At. \_\_\_\_\_  
Object Ident. \_\_\_\_\_  
Ident. By \_\_\_\_\_  
*Signature*

6

DESCRIBE CORNER LOCATION RELATIVE TO NEAR-BY FEATURES, ALSO HOW TO REACH CORNER

PLANE COORDINATE POSITION DATA

State \_\_\_\_\_ Zone \_\_\_\_\_  
X \_\_\_\_\_  
Y \_\_\_\_\_  
Estab. By \_\_\_\_\_  
*Agency*

8

Signature \_\_\_\_\_

Title \_\_\_\_\_

Division \_\_\_\_\_

Headquarters \_\_\_\_\_

Date \_\_\_\_\_

7100-52

REV. 65 5



4

**CORNER RECORD (PERPETUATION)**

**MONUMENT. DESCRIBE NEW MONUMENT SET, OR WORK DONE TO PRESERVE EXISTING MONUMENT**

Set 30x2½" iron pipe with 3" brass cap marked as shown 26" in the ground and raised a mound of stone around the pipe for the 1/4 corner between sec. 1 and 2, from which a new BT:

**ACCESSORIES : DESCRIBE NEW BT'S WITNESS OBJECTS ETC. ESTABLISHED, OR WORK DONE TO PRESERVE EXISTING EVIDENCE**

A fir 16" diam. bears S12°E 11.4 ft. dist. marked T1S R36E 1/4 S1 BT. Distance taken to a brass washer in the blaze of the BT.  
Set a steel fence post approx. 5 ft. North from corner with Forest Boundary sign attached.  
Used steel tape and magnetic compass with declination = 20° East.

Work Done By D.M. Ferguson Title Land Surveyor Date 7/12/69 State Registration No. 848  
Certified Cor. Record Prepared?  Yes  No Filed At: Umatilla Co. Courthouse Date 11/16/72

REMARKS

Index File No.      T.      R.      M.      Tract or Surv. No.      Cor.      12  
13