

USDA-FOREST SERVICE

Index
File No. A-19

CORNER RECORD (SEARCH)

(Ref. FSM 7151.4)

Tract or
Survey No. _____ Cor.
No. _____

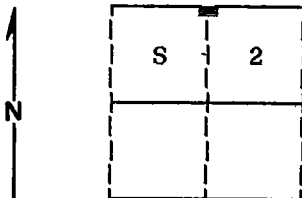
T 1S R. 36E

R.D. WALLA WALLA County UMATILLA

Merid. WILLAMETTE

N.F. UMATILLA State OREGON

CORNER DIAGRAM



DESCRIBE CORNER MONUMENT FOUND

Corner not previously established.

DESCRIBE BEARING TREES OR OTHER OFFICIAL ACCESSORIES FOUND

Corner not previously established.

PHOTO IDENTIFICATION DATA

12 616140A 787-111

Photo No. _____

Filed At. Ranger Office

Object Ident. Bearing Trees

Ident. By D.I. Griffith

Signature

PLANE COORDINATE POSITION DATA

State _____ Zone _____

X _____

Y _____

Estab. By _____

DESCRIBE CORNER LOCATION RELATIVE TO NEAR-BY FEATURES, ALSO HOW TO REACH CORNER

Corner falls on steep Northwest slope with scattered timber approximately 2200 feet East of the railroad track and approximately 200 feet North of the top of the ridge.

Agency

Signature

Title
Surveyor

Division

Headquarters

Date
9-19-89 FS-7100-52 (3/68)

CORNER RECORD (PERPETUATION)

MONUMENT: DESCRIBE NEW MONUMENT SET, OR WORK DONE TO PRESERVE EXISTING MONUMENT

Set a 2½"x30" aluminum pipe with aluminum cap marked as shown:
Pipe is set 26 inches in the ground.

T1N R36E

¼ S 2
T1S R36E
1989
OPLS 644

ACCESSORIES : DESCRIBE NEW BT'S WITNESS OBJECTS ETC. ESTABLISHED, OR WORK DONE TO PRESERVE EXISTING EVIDENCE

New BTs:

A 16 inch diameter Ponderosa Pine bears S65°W, 73.54 feet marked ¼ S2 BT

A 14 inch diameter Ponderosa Pine bears N38°W, 7.65 feet marked X BT

(No other tree available to the South)

Painted a 6 inch red band around all bearing trees and attached 54-3 and 54-9 signs.

Set a steel fence post approximately 5 feet East with 54-9 sign attached.

Work Done By D.I. Griffith Title Surveyor Date 9-14-89 State Registration No. OPLS 644
or Agency

Certified Cor. Record Prepared? Yes No Filed At: Umatilla Co. Surveyor's Office Date 9-89

REMARKS

Witnesses: Rick Robinson and Jeff Petersen

Index File No. A-19

T. 1S

R. 36E W.M.

Tract or Surv. No.

Cor.