

**OREGON CORNER RESTORATION FORM**

Section 10 Township 1S Range 34E  
 County Umatilla Date: 11-04-2004

Corner Designation: T1SR34EG16

_____	Condition Report Only
_____	Not Found
_____	Re-monumented
_____	Unrecorded
_____X_____	Surveyed In
_____X_____	Referenced Out

Previous Renewals / Surveys, etc.  
 Corner not previously set.

Monument and Accessories Found: ( condition and source )  
 Corner not previously set.

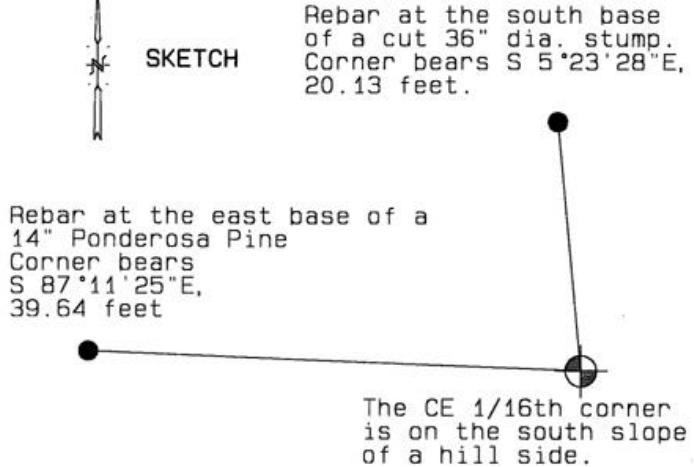
DIAGRAM



2.5" dia. Orange plastic cap



SKETCH



**MONUMENT (S) AND ACCESSORIES SET (Procedures and Description)**

Set one 5/8" x 30" steel Iron pin in the ground with a 2.5" dia. Orange plastic cap flush with the ground.  
 Set a 5' Steel T-post with a Umatilla County Sign.  
 (See attached photographs)

**REFERENCES SET:**

Set two 5/8"x30" iron rebar with a 1.25" dia. red plastic cap stamped WALS 13922 and ORLS 0852.

As shown in sketch above.

**Location and Comments**

**Compass Declination**  
 20 °E

**Surveyors Seal**

From the center 1/4 section corner proceed eastward on a bearing of S89°44'07"E along the fence line 1287 feet to the fence corner on the south slope of a hill.

REGISTERED  
 PROFESSIONAL  
 LAND SURVEYOR

**RECEIVED BY:**

**Firm / Agency**

*David L. Haddock*

Date: 07-05  
 Rec'd By: KK  
 No. 05-04-B

Haddock Surveying  
 P. O. Box 1574  
 Pendleton, OR 97801  
 (541) 276-2174

OREGON  
 JULY 12, 1968  
 DAVID L. HADDOCK  
 852