

OREGON CORNER STORAGE FORM

Section 3 Township 1S Range 34E
 County Umatilla Date: May 28, 1997

Corner Designation: 1S34E13

Corner to sections 3, 4, 9 and 10, T1S, R34E W.M.

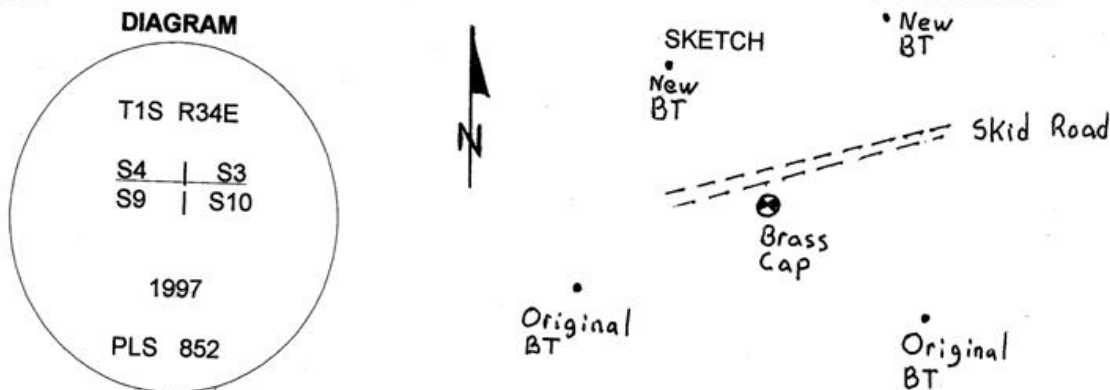
Condition Report Only
 Not found
 Remonumented
 Unrecorded
 Surveyed in
 Referenced out

Previous Renewals / Surveys, etc.

Corner originally set by Currin and Nolan under special contract dated May 4, 1887.
 His record reads: Set post, 4 ft. long, 4 ins. sq., 2 ft. in ground for corner to Secs. 3, 4, 9 & 10, mark T.1 S., S.3 ON N.E., Sec. 4 ON N.W., S.9, ON S.W., R.34 E., S.10 ON S.E. faces. 5 notches on S. 3 notches on E. edge, from which: A pine, 16 ins. diam, brs.N.30° E., 180 lks. dist., marked T.1 S., R.34 E., S.3, B.T.; a pine, 10 ins. diam., bears S. 65° E., 78 lks. dist., marked T.1S., R.34E., S.10, 1 a pine, 14 ins. diam., bears S. 60° W., 83 lks. dist., marked T.1S., R.34E., S.9, B.T.; a pine, 16 ins. diam., bears N. 62° W., 92 lks. dist., marked T.1S., R.34E., S4, B. T.

Monument and Accessories found: (condition and source)

Found dead 14" Ponderosa Pine S65°E, 51.48 feet from corner point, with visible scribing. Found five 20" Ponderosa Pine with healed blaze S60°W, 54.78 feet. Found steel fence post near corner point.



MONUMENT (S) AND ACCESSORIES SET (Procedures and Description)

Set a 1 1/4" x 30" Galvanized Iron Pipe with a 2 1/2" brass cap stamped as shown in the diagram above at the record distance from the two bearing trees. The cap is 6" above the surface of the ground with a collar of stone.

For references, I set two witness trees as described below:

A 12" Ponderosa Pine bears N25°30'W, 48.88 feet scribed T1SR34ES4BT.

A 25" Ponderosa Pine bears N28°30'E, 63.15 feet scribed T1SR34ES3BT.

Each tree has a 1/14" brass washer stamped ORLS852 and WAL13922 nailed between the letters B and T.

Monument and reference locations were surveyed with a compass and tape.

The bearings and distances are true

Location and comments

Compass Declination N20°E

Surveyors Seal

RECEIVED BY:
 Umatilla County Surveyor

Date: 9-97

Rec'd By: AK

No. 97-172-B

Firm / Agency
 Haddock Surveying
 Address
 P.O. Box 1574
 Pendleton, Or. 97801
 Party Chief
 David L. Haddock

REGISTERED
 PROFESSIONAL
 LAND SURVEYOR

David L. Haddock

OREGON
 JULY 12, 1969
 DAVID L. HADDOCK
 852