

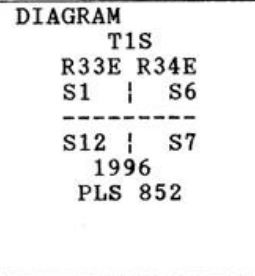
CERTIFIED RECORD OF LAND CORNER MONUMENTATION

History of original corner establishment:

Index: E-25

Cor., Secs. 1 & 12, R33E; and 6 & 7, R34E, of T1S, WM.

Corner originally set by Currin & Nolan in special contract dated May 4, 1887. Their record reads: 80.00 Set a post 48x4x4 ins., 2 ft, in the ground for Cor. to Secs. 1, 6, 7, & 12, marked T.1S., S.1 on N.W., S. 6 on N.E., R.34E., S.7 on S.E., R.33E., S.12 on S.W faces with 5 notches on S. and 1 on N. edges from which A pine, 12ins. diam. brs. N.25°E., 93 lks. dist. marked T.1S., R.34E., S.6 B.T. A pine, 14 ins. diam., brs.N.25°W., 135lks. dist., marked T.1S., R.33E., S.1, B. T. No other trees in limits. Raised mound of stone alongside. Pits impracticable.



L. E. Wilkes, with Group 29 dated Feb. 20, 1917, remonumented this point. His record reads: Set an iron post 3' long 2" diam 24 ins in ground for corner to secs. 1, 6, 7 and 12 with brass cap from original bearing trees. Mound of stone 2' base 1 1/2' high west of corner. A pine 18 in diam bears N20°50'E, 93 lks. Blazes healed & unopened. A pine bears N 29°30'W, 135 lks. Blazes healed & unopened.

Description of corner evidence found:

Found remains of stump at record bearing and distance northeast of surveyed point. Found depression in ground near record bearing and distance for other bearing tree. Excavation at the point produced pieces of rotted roots and charred wood. There were no other trees within 300 feet of the corner.

Description of monument and accessories I established to perpetuate the original location of this corner:

The corner was set at Wilke's record bearing and distance from the center of the remaining bearing tree stump. I set a 1 1/2 " x 24" galvanized iron pipe with 2 1/2" brass cap 20" in the ground and stamped the cap as shown in the diagram above, from which:

The original bearing tree stump bears N21°35'E, 93 links.

A 5/8"x24" rebar with 2 1/2" red plastic cap bears N21°26'E, 60.8' stamped B.O., ORLS 852, AND WALS 13922. The pin was driven into the base of the existing bearing tree stump.

A 5/8"x24" rebar with 2 1/2" red plastic cap bears N29°18'W, 135 links. stamped B.O., ORLS 852, AND WALS 13922. The pin was driven into the location of the decayed remains of the other bearing tree stump.

A 5/8"x24" rebar with 2 1/2" red plastic cap bears S32°11'E, 43.1' stamped B.O., ORLS 852, AND WALS 13922. The pin lies under the existing fence.

A 5/8"x24" rebar with 2 1/2" red plastic cap bears S13°05'W, 37.8' stamped B.O., ORLS 852, AND WALS 13922. The pin lies under the existing fence.

The bearings are based on the surveyed bearing of the section line to the west.

This work was performed on May 31, 1996, and was witnessed by Stephen K. Haddock.

Office of \_\_\_\_\_ County of \_\_\_\_\_  
 State of \_\_\_\_\_, I hereby certify that the within instrument was filed  
 in this office for record on the \_\_\_\_\_ day of \_\_\_\_\_, 19\_\_\_\_.

( COUNTY OFFICIAL )

by \_\_\_\_\_

( DEPUTY )

RECEIVED BY  
 Umatilla County Surveyor  
 Date 6-96  
 Rec'd by KK  
 No. 96-112-C

REGISTERED  
 PROFESSIONAL  
 LAND SURVEYOR

*David L. Haddock*

OREGON  
 JULY 12, 1969  
 DAVID L. HADDOCK  
 852

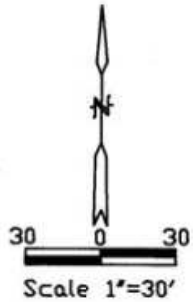
# CORNER DIAGRAM

## T1S R33E E-25

REGISTERED  
PROFESSIONAL  
LAND SURVEYOR

*David L. Haddock*

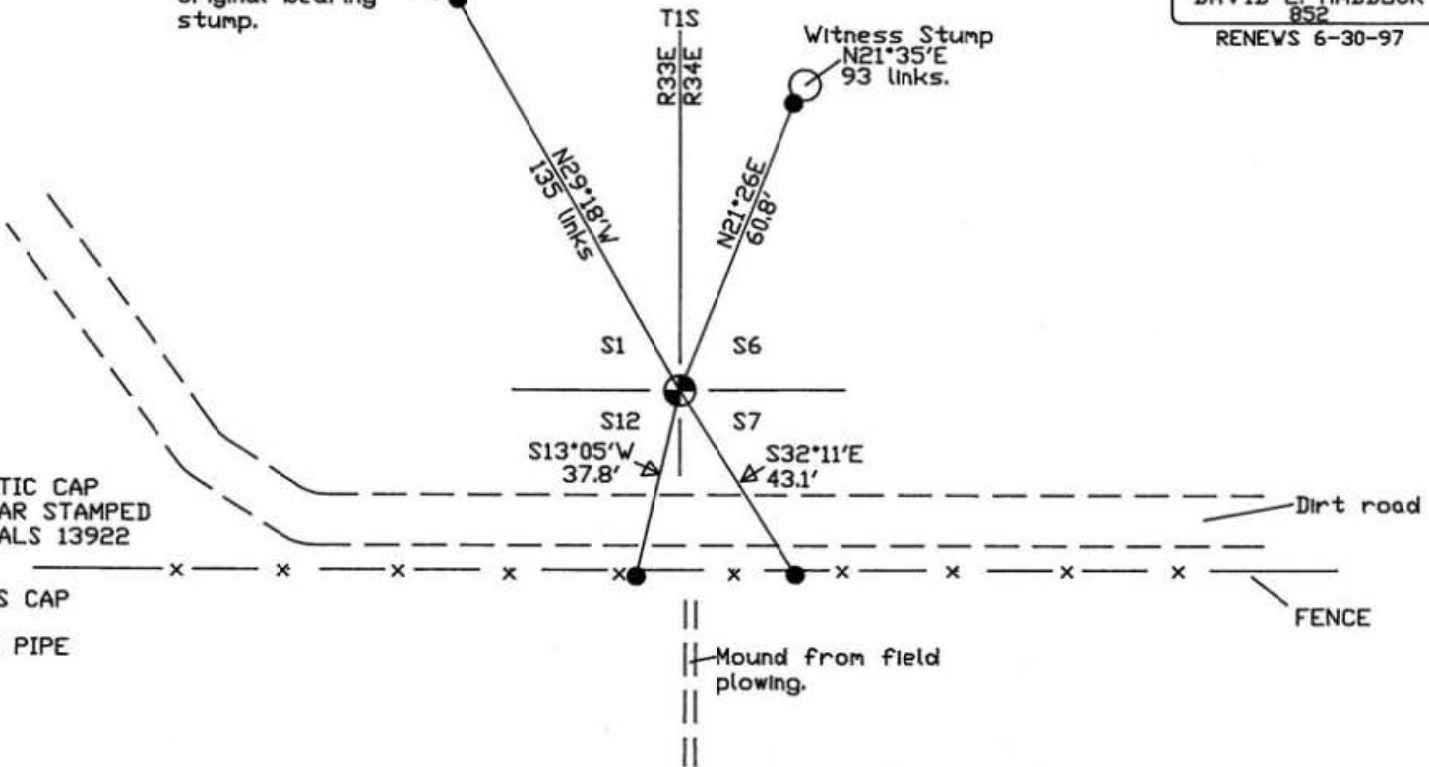
OREGON  
JULY 12, 1968  
DAVID L. HADDOCK  
852  
RENEWS 6-30-97



Bearing object  
at location of  
original bearing  
stump.

Witness Stump  
N21°35'E  
93 links.

RECEIVED BY  
 Umatilla County Surveyor  
 Date \_\_\_\_\_  
 Rec'd By \_\_\_\_\_  
 No. 94-112-C



● BEARING OBJECT  
2 1/2" RED PLASTIC CAP  
ON 5/8" X 24" REBAR STAMPED  
ORLS 852 AND WALS 13922

⊕ SET 2 1/2" BRASS CAP  
ON 1 1/2" X 24"  
GALVANIZED IRON PIPE