

Form 874-9—Revised May, 1918  
 U. S. DEPARTMENT OF AGRICULTURE  
 FOREST SERVICE

Unadilla NATIONAL FOREST

CORNERS OF THE PUBLIC SURVEY

T. 2 N R. 37 Mer. E N

Corner common to Sections 26, 36, and 2

Corner consists of a Post (not) in place

State condition \_\_\_\_\_ inches.

Dimensions above ground 2 1/2" x 1 1/2"  
 Sketch grooves, letters, figures, or notches, on proper face or edge.

CARDINAL POSITION

	→		
	—		
	—		
	—		
N	W	S	E

DIAGONAL POSITION

NW	SW	SE	NE

Mound of \_\_\_\_\_ is located \_\_\_\_\_

Pits are located \_\_\_\_\_  
 Sketch markings of Bearing Trees (or Rocks) in proper box and fill blanks below, giving bearings from Corner to Trees and Distances in Links.

<u>T2N</u> <u>N51E</u> <u>35</u>			<u>T2N</u> <u>N51E</u> <u>36</u>
<u>10T</u>			<u>10T</u>

Species	<u>S.F.</u>	<u>S.F.</u>	<u>S.F.</u>
Diameter	<u>3.2"</u>	<u>3.2"</u>	<u>3.2"</u>
Bearing	<u>N10W</u>	<u>N10E</u>	<u>N10E</u>
Distance	<u>21.5 ft</u>	<u>21.5 ft</u>	<u>21.5 ft</u>

Do you believe this to be a genuine Land Office Corner? Yes  
 If not, why? \_\_\_\_\_

Signature, \_\_\_\_\_

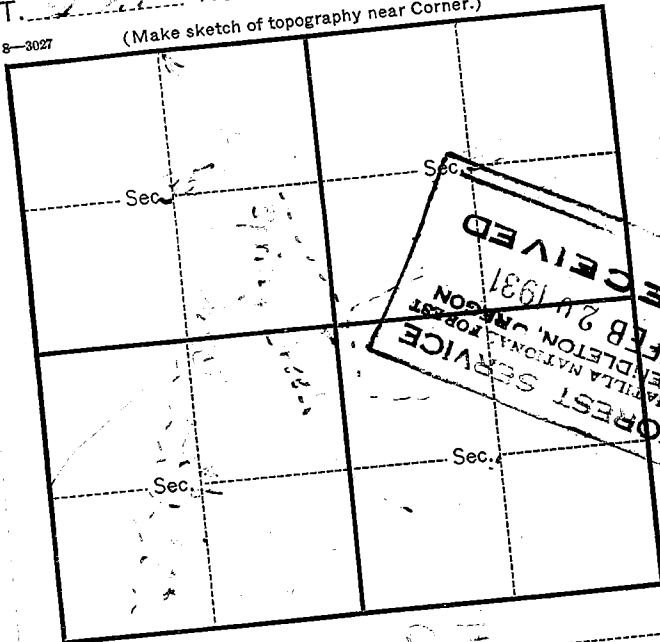
Date, \_\_\_\_\_

Title, \_\_\_\_\_

T. 27 R. 37 Mer.

8-3027

(Make sketch of topography near Corner.)



Metal Location Poster is on a tree inches diameter, on the side of tree from which this Corner bears N.W. chains distant.

Give any further facts which will aid in finding this Corner again.

about 3 chains in the  
direction of the road  
to the east of  
the corner. The corner  
is along the line of the  
road.

USDA-FOREST SERVICE

Index  
File No. A-21

CORNER RECORD (SEARCH)  
(Ref. FSM 7151.4)

Tract or Survey No. \_\_\_\_\_ Cor. No. A-21

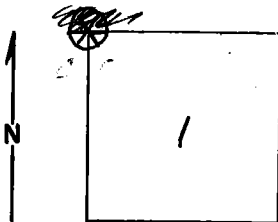
T 1 N 37 E

R.D. Walla Walla County \_\_\_\_\_

Merid. \_\_\_\_\_

N.F. Umatilla State \_\_\_\_\_

CORNER DIAGRAM



DESCRIBE CORNER MONUMENT FOUND

Material: None

DESCRIBE BEARING TREES OR OTHER OFFICIAL ACCESSORIES FOUND

28" Fir - NE Quad. - Down, too rotten to identify.

20" Fir Stump - SE Quad. - Stump top indicates tree was blazed correct dist. out for BT.

26" Pine Snag, 10' high - SW Quad. scribed as called for in G.L.O. Notes.

There is 24" dia. Fir stump 2' high blazed on South face scribed: 2N R37E S35. Probably set before resurvey. No evidence NW.

DESCRIBE CORNER LOCATION RELATIVE TO NEAR-BY FEATURES, ALSO HOW TO REACH CORNER

*note: this is off set corners. 0.65 ch apart. Moore apparently found B.T.'s FOR Both corners.*

*D. Gaylord*

PHOTO IDENTIFICATION DATA

Photo No. \_\_\_\_\_  
Filed At. \_\_\_\_\_  
Object Ident. \_\_\_\_\_  
Ident. By \_\_\_\_\_

*Signature*

PLANE COORDINATE POSITION DATA

State \_\_\_\_\_ Zone \_\_\_\_\_  
X \_\_\_\_\_  
Y \_\_\_\_\_  
Estab. By \_\_\_\_\_  
*Agency*

Signature  
B. Moore

Title

Division

Headquarters

7/79  
Date

7100-52-(3/68)

**CORNER RECORD (PERPETUATION)**

**MONUMENT: DESCRIBE NEW MONUMENT SET, OR WORK DONE TO PRESERVE EXISTING MONUMENT**

**ACCESSORIES : DESCRIBE NEW BT'S WITNESS OBJECTS ETC. ESTABLISHED, OR WORK DONE TO PRESERVE EXISTING EVIDENCE**

I placed Attention poster on the 24" Fir stump.

Attention poster and BT poster on the Pine snag.

BT poster on the 20" Fir stump.

Work Done By \_\_\_\_\_ Title \_\_\_\_\_ Date \_\_\_\_\_ State Registration No. \_\_\_\_\_  
or Agency \_\_\_\_\_  
Certified Cor. Record Prepared ? Yes No Filed At: \_\_\_\_\_ Date \_\_\_\_\_

**REMARKS**

Index File No. T. R. M. Tract or Surv. No. Cor. 13  
U.S. G.P.O. 1977-725-576/586