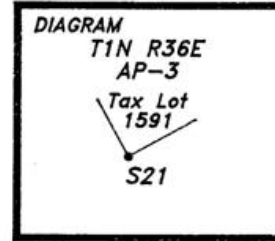


CERTIFIED RECORD OF LAND CORNER MONUMENTATION

History of original corner establishment:

NONE

N.10-11.30
346378
T. 1 N., R. 36 E.
Angle Point 3 of section 21



Description of corner evidence found:

NONE

Description of monument and accessories I established to perpetuate the original location of this corner:

Set a 2 1/2" diameter by 30" long aluminum pipe, with 3 1/4" diameter aluminum cap, 23" in the ground, with a White DEEP-1 magnetic reference set in the bottom of the hole, marked as shown, from which:

29" Ponderosa Pine bears S 12 1/4' E, 37.2 feet, scribed "AP3 S21" "BT".
15" Douglas Fir bears N 73 1/2' W, 29.9 feet, scribed "AP3 S21" "BT".

The new bearing trees are double blazed and have a 3/4" diameter brass washer stamped "RLS 2308" nailed to the lower blaze between the scribed "B T".



DATUM: NAD83(1991) Oregon High Accuracy Reference Network
STATE PLANE COORDINATES: Oregon North Zone in International Feet
No. Latitude Longitude Northing(Y) Easting(X)
346378 45°33'29.92043" N. 118°18'59.92663" W. 697203.861' 8761271.923'

REGISTERED
PROFESSIONAL
LAND SURVEYOR

David A. Schlaich

OREGON
JULY 16, 1987
DAVID A. SCHLAICH
2308

RENEWAL DATE: 06/30/2004

Work Performed By: David A. Schlaich (RLS 2308)
Witnessed By: Matthew Duffy
Equipment: Topcon GPT-6005C Total Station
Magnetic Declination: 17 1/2" East
Date: September 10, 2002

Office of..... County of.....

State of....., I hereby certify that the within instrument was filed in this office for record on the..... day of....., 20.....

..... by.....
(COUNTY OFFICIAL) (DEPUTY)

Form R6-7100-57 (9/71)

SEE MAP OF SURVEY NO. 03-31-B