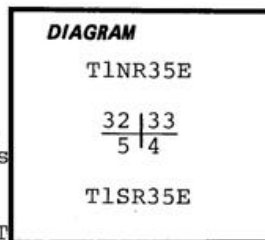


CERTIFIED RECORD OF LAND CORNER MONUMENTATION

2-9

History of original corner establishment:

This corner was last officially monumented by Currin and Nolan under special contract dated April 23, 1887. The notes state that at the corner a 4 foot long by 4 inch square post was set 24 inches in the ground from which:



2-9

- A 18" hemlock bears S40°E - 19LK marked S.C.T1SR35EBT
- A 14" red fir bears N20°W 52LK-marked SCT1NR35ES32BT
- A 10" red fir bears N40°E 46LK marked SCT1NR35ES33BT

Description of corner evidence found:

Found squared off wood post painted red, at north - south - west fence line. Measurements to corners found west, north south and east verify this corner location. No evidence of bearing trees remain. A yellow location tag on the SE new bearing tree is dated 1948.

Description of monument and accessories established to perpetuate the original location of this corner:

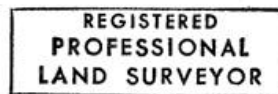
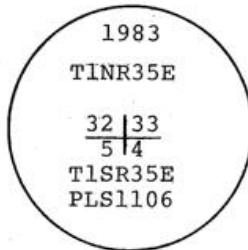
- Set 2"X30" iron pipe with 2½" brass cap 24" in the ground from which:
- A 15" white fir bears N26°E-31.2 feet scribed T1NR35E S33BT
- A 8" white fir bears N62°W-25.0 feet scribed T1NR35E S32BT.
- A 10" white fir bears S51°E-7.9 feet scribed T1SR35E S4BT.
- A 7" western larch bears S58½°W-33.5 feet scribed T1SR35E S5BT.

Used staff compass with 20° east declination and measured to center of bearing trees.

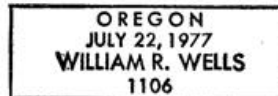
Corner was set on June 4, 1983

CAP IS MARKED

Witness: Stanley G. Wallulis



*William R. Wells*



Office of Surveyor County of Umatilla  
 State of Oregon I hereby certify that the within instrument was filed in this office  
 for record on the 22<sup>nd</sup> day of February 1985  
 By Betty Cochran  
 (COUNTY OFFICIAL) (DEPUTY)

RECEIVED BY  
 Umatilla County Surveyor  
 Date 1985  
 Rec'd By bc  
 No. 85-13-A