

CERTIFIED RECORD OF LAND CORNER MONUMENTATION

HISTORY OF ORIGINAL CORNER ESTABLISHED:

Corner not previously established.

T 1 N R 35 E U-16 1/2

S	27
	■

DESCRIPTION OF CORNER EVIDENCE FOUND:

None.

DESCRIPTION OF MONUMENT AND ACCESSORIES I ESTABLISHED TO PERPETUATE THE ORIGINAL LOCATION OF THIS CORNER:

At position determined by survey, I set a 5/8" x 30" iron pin with 2 1/2" aluminum cap, marked as shown below, 22" in the ground, with 2' diam. collar of stone, from which:

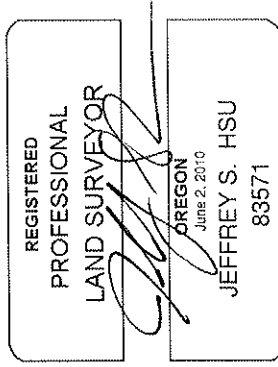
NEW BEARING TREES:

A 14" Douglas Fir bears South 19° West a dist. of 4.25 ft. marked CC LOT 2 BT.
A 5" White Fir North 71° West a dist. of 23.40 ft. marked CC LOT 1 BT.

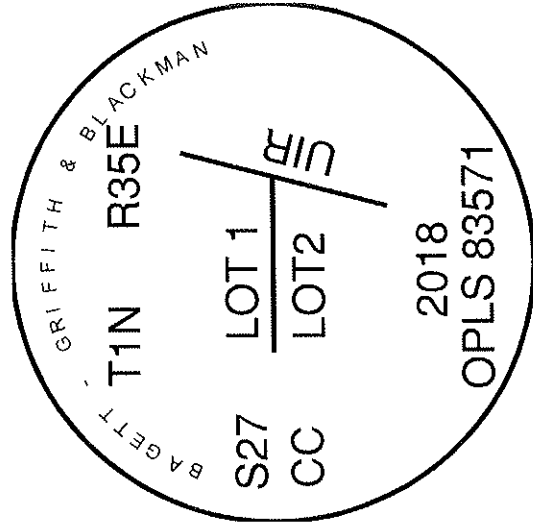
Set a steel fence post approx. 1 foot West of the corner monument. Corner falls approx. 50' North of East/West running forest road.

I hereby certify that the corner was monumented on June 28, 2018.

Witness: Kyle Tucker, Ryan Skeen



Renewal Date: June 30, 2019



I used a steel tape and magnetic compass in the establishment of the new accessories. I used 13° East declination, the distances are to a 60d spike driven into the right side of the root crown of the bearing trees. A brass washer marked OPLS 83571 is attached to the BT blaze of the new bearing trees.

U-16 1/2

18-056-B