

OREGON CORNER RESTORATION FORM

Section 28 Township 1N Range 35 E

County Umatilla Date 8 / 20 / 87

T-13

CORNER DESIGNATION

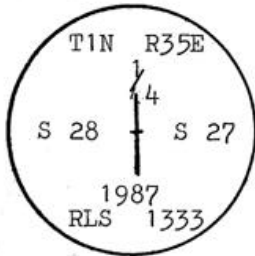
- Condition Report Only
- Not Found
- Renewed
- Unrecorded
- Surveyed In
- Referenced Out

Previous Renewals/Surveys, etc. Originally a post with 2 brg. trees ( Currin and Noland May 4, 1887 )

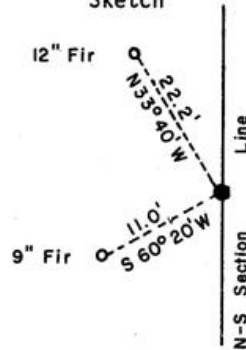
Monument(s) & Accessories Found: (Condition and Source)

I made a search of the area and found no evidence of the corner or accessories. The area has been logged off at least twice in the past.

Monument Detail



Sketch



Monument Set (Procedures and Description)

Set 1" X 30" G.I.P. w/flared base and 2 1/2" brass cap 20" in the ground and surrounded with a mound of stones. The monu. was surveyed in half way between the 2 section corners common to sections 27. & 28. from monuments in Papoose Woodlands Plat

New Accessories

A 12" dia. fir tree was scribed (1/4 S28 BT) and bears N33°40'W 22.2 ft. A 9" dia. fir tree was scribed ( 1/4 S28 BT ) and bears S60°20'W 11.0 ft. A yellow witness sign was nailed to each tree with alum. nails. A 4 ft. green steel fence post and yellow witness sign was placed by the monu.

Location & Comments

Corner is in the Blue Compass Declination \_\_\_\_\_  
Mountains in a timbered Firm/Agency Don Staebler  
area north aprox. 1/3 Engineer - Surveyor  
mi. from a Bonnv. Power Address 1532 S. W. 41 St.  
Line. Pendleton, Or. 97801  
 \_\_\_\_\_ Party Chief Don Staebler  
 \_\_\_\_\_ Notes \_\_\_\_\_  
 \_\_\_\_\_ Witness \_\_\_\_\_

Surveyor's Seal

