

R-7

OREGON CORNER RESTORATION FORM

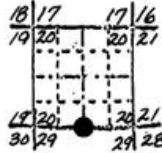
Section 20 Township IN Range 35E

County Umatilla Date 11-11-87

R-7

Corner Designation

QUARTER CORNER
BETWEEN 20 AND 29



- Condition Report Only
- Not Found
- Renewed
- Unrecorded
- Surveyed In
- Referenced Out

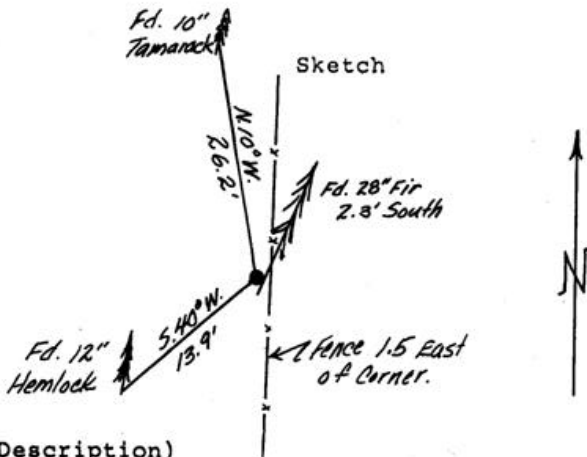
Previous Renewals/Surveys, etc.

G.L.O.-1887
State parks 8-28-81

Monument(s) & Accessories Found: (Condition and Source)

- Fd. 5/8" Iron Rod with aluminum cup marked "Oregon State Parks"
- Fd. steel Post & paddle Marked "Oregon State park boundary do not disturb" 2.0' east
- Fd. 28" fir south- 2.3' to center.
- Fd. 12" hemlock S40° W-13.9' scribes visible "N $\frac{1}{2}$ S29° BT RSG91"
- Fd. 10" Tamarack N10°W- 26.2' trace of scribes in partially healed blaze

Monument Detail



Monument Set (Procedures and Description)

New Accessories

Location & Comments
Blue Mtn. Forest Waysides
west boundary in
Sec.20 T.IN. R35E

Compass Declination 20°
Firm/Agency Oregon State
Parks & Recreation Div.
Address 525 Trade Street SE
Salem OR 97310

Party Chief R. Hemmer
Notes R. Hemmer
Witness R.Hill-H.Hanson

Seal



RECEIVED BY
Umatilla County Surveyor
Date 2-88
Rec'd By [Signature]
No. 88-11-B

Witnessed by:

R. Hemmer
L. Boge
L. Hettema

1/4 Corner Sections 20 and 29 R-7

Original:

Set post 3' long, 3" square, 24" in ground, marked "1/4 S" on north face (not found).

36" fir N45°W, 29 links "1/4 S BT" (not found).

12" pine S69°E, 30 links "1/4 S BT" (not found).

Parks Crew Reestablishment:

Set: 5/8" x 30" capped iron rod marked "Oregon State Parks".

7' steel post with white boundary paddle marked "Oregon State Park Boundary Do Not Disturb" 2.0 east of iron rod.

12" fir S42 1/2°W, 14.2' to center, scribed "N 1/4 S29 BT RS691".

9" Tamarack N10°W, 26.0' to center, scribed "S 1/4 S20 BT". Set Parks' corner tag.

Corner is 11.0' west of a north-south fence line and 1.0' north of a 28" fir, and 6.3' south of a 2" yew.

Witnessed by:

R. Hemmer
L. Boge
L. Hettema

East 1/16 Corner Sections 20 and 29 R-8

Parks Crew Set:

5/8" x 30" capped iron rod with aluminum cap marked "Oregon State Parks".

7' steel post with white boundary paddle marked "Oregon State Park Boundary Do Not Disturb", 2.0' west of iron rod.

21" fir S41°W, 14.0' to center, scribed "E1/16 S29 BT".

6" red fir N18°W, 14.9' to center, scribed "E1/16 S20 BT RS691". Set Parks corner tag.

Corner is N64°W, 90' from 1 1/2' wide creek, course north-south.

Witnessed by:

R. Hemmer
L. Boge
L. Hettema

RECEIVED BY

Jmatilla County Surveyor

Date _____

held by, BLS _____

No. S-124 _____

Section Corner

20	21
29	28

 R-9

Original:

Var. 20°

Set basalt stone 14"x12"x10", 8" in ground for corner Sections 20, 21, 28 and 29. Marked 2 notches on south and 4 notches on east edges. (Parks crew found 12"x5" stone with "X" on top solidly in ground with 4" showing out of ground; notches were not visible.)