

P-7

OREGON CORNER RESTORATION FORM

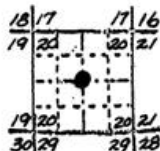
Section 20 Township IN Range B5E

County Umatilla Date 12-2-87

P-7

Corner Designation

CENTER QUARTER  
CORNER SEC. 20

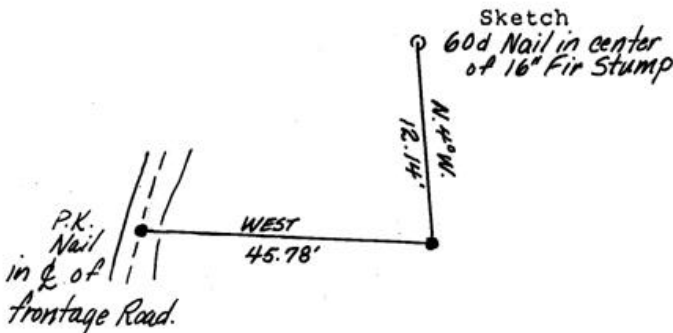


- Condition Report Only
- Not Found
- Renewed
- Unrecorded
- Surveyed In
- Referenced Out

Previous Renewals/Surveys, etc.

Monument(s) & Accessories Found: (Condition and Source)

Monument Detail



Monument Set (Procedures and Description)

Set 5/8" Iron rod with yellow plastic cup marked "Oregon State Parks" at intersect of lines from exterior quarter corners as per manual of instructions. Corner falls approx. halfway up fill slope between I-84 off ramp & access road to Pond Loree.

New Accessories

- Set 60d nail in center of 16" fir stump N4°W-12.14'
- Set P.K. nail in center line of frontage road. West-45.78'
- Set plain orange carsonite post 2.0' south.

Location & Comments

Blue Mtn. Forest  
waysides west boundary  
in section 20, Tin, R35E

Compass Declination 20°

Firm/Agency Oregon State  
Parks & Recreation Div.

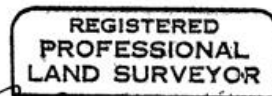
Address 525 Trade Street SE  
Salem OR 97310

Party Chief R. Hemmer

Notes Hill

Witness H. Hanson  
L. Boge

Seal



*John E. Hollingsworth*  
OREGON  
JULY 9, 1968  
JOHN E. HOLLINGSWORTH  
691

RECEIVED BY

Umatilla County Surveyor  
Date 2-88  
Rec'd By AT  
No. 88-11-B