

OREGON CORNER RESTORATION FORM

Section 20 Township IN Range 35E

County Umatilla Date 11-17-87

Corner Designation

QUARTER CORNER
BETWEEN 19 AND 20



- Condition Report Only
- Not Found
- Renewed
- Unrecorded
- Surveyed In
- Referenced Out

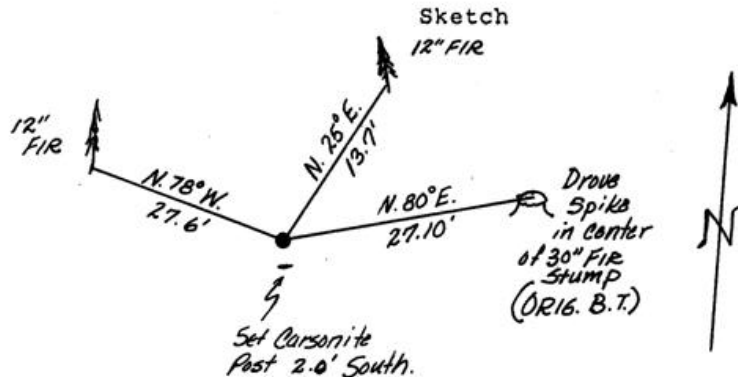
Previous Renewals/Surveys, etc.

GLO-1887

Monument(s) & Accessories Found; (Condition and Source)

Fd. original NE B.T. Now a 30" fir stump recovered bottom of old blaze face with scribes "BT" intact. Also found old cor. tag on top of stump.

Monument Detail



Monument Set (Procedures and Description)

Set 5/8"x30" Iron rod with yellow plastic cap marked "Oregon State Parks", drove spike in center of stump and chained 27.10' mag S80°W to set cor. monument

New Accessories

12" Fir N25°E-13.7' scribed "S20BT" attached corner tag
12" Fir N78°W-27.6' scribed "S19 RS691BT" attached corner tag
set plain orange carsonite post 2.0' south of corner monument.

Location & Comments

Blue Mtn Forest waysides
West boundary in Sec 20
T1N, R35E.

Compass Declination 20°

Firm/Agency Oregon State
Parks & Recreation Div.

Address 525 Trade Street SE
Salem OR 97310

Party Chief R. Hemmer

Notes R. Hemmer

Witness R.Hill-H.Hanson

Seal

REGISTERED
PROFESSIONAL
LAND SURVEYOR

John E. Hollingsworth

OREGON
JULY 9, 1988
JOHN E. HOLLINGSWORTH
691

RECEIVED BY

Umatilla County Surveyor

Date 2-8-88

Rec'd By RA

No. 88-11-B