

0-7

OREGON CORNER RESTORATION FORM

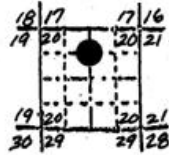
Section 20 Township TN Range 35E

0-7

County Umatilla Date 12-2-87

Corner Designation

CN1/16

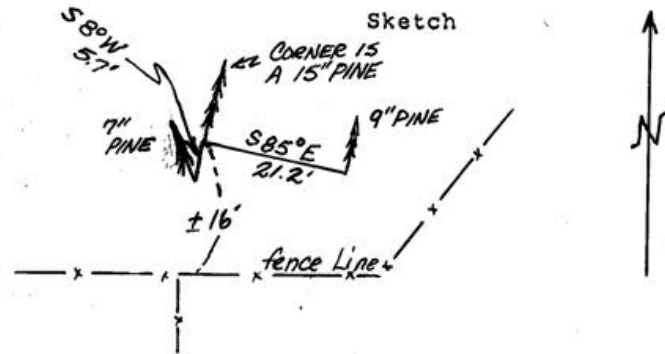


- Condition Report Only
- Not Found
- Renewed
- Unrecorded
- Surveyed In
- Referenced Out

Previous Renewals/Surveys, etc.

Monument(s) & Accessories Found: (Condition and Source)

Monument Detail



Monument Set (Procedures and Description)

Corner Falls in a 15" Pine Tree, Approx. 3" NW of center. Blazed & Scribed W&E faces "CN1/16S20" Attached Cor. Tag.

New Accessories

Blazed 7" Pine S8° W-5,7' to Center scribed "XBT" blazed 9" Pine S85°E- 21.2' to center scribed "CN1/16S20BT" attached corner tags to both BT's.  
Set Orange carsonite post with decal marked "Property Boundary State Park Land" behind this sign" 1.0' S.E.

Location & Comments

Blue Mtn. Forest  
wayside-west Boundary  
survey in section 20,  
T1N, R 35E

Compass Declination 20°

Firm/Agency Oregon State  
Parks & Recreation Div.

Address 525 Trade Street SE  
Salem OR 97310

Party Chief R. Hemmer

Notes R. Hemmer

Witness R. Hill  
H. Hanson

Seal

REGISTERED  
PROFESSIONAL  
LAND SURVEYOR

*John E. Hollingsworth*

OREGON  
JULY 9, 1902  
JOHN E. HOLLINGSWORTH  
691

RECEIVED BY

Umatilla County Surveyor  
Date 2-88  
Rec'd By KA  
No. 88-11-B