

OREGON CORNER RESTORATION FORM

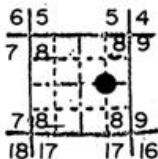
Section 8 Township 1N Range 35E

G-8

County Umatilla Date 1/5/88

Corner Designation

CE 1/16, S 8



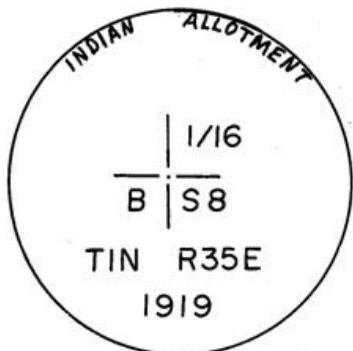
- Condition Report Only
- Not Found
- Renewed
- Unrecorded
- Surveyed In
- Referenced Out

Previous Renewals/Surveys, etc.
Set in Indian Allotment surveys in 1919.

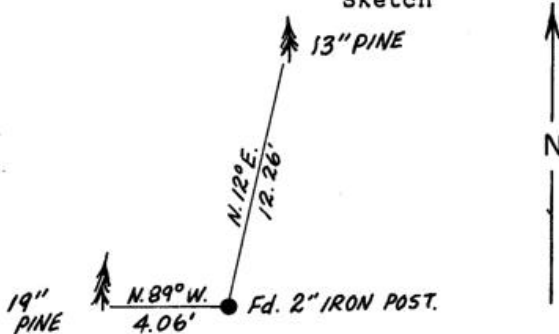
Monument(s) & Accessories Found: (Condition and Source)

Found 2" iron post with brass cap firmly set projecting 6" above ground.

Monument Detail



Sketch



Monument Set (Procedures and Description)

None.

New Accessories

13" pine bears N12°E, 12.26' to 2 finish nails side and center marked "CE 1/16 S 8 BT".
 19" pine bears N89°E, 4.06' to 2 finish nails side and center marked "X BT".
 Set blank orange Carsonite post 2.0' south.

Location & Comments

Drawing not to scale.
Reference by hand compass and steel tape.

Compass Declination 20°E

Firm/Agency Oregon State Parks & Recreation Div.

Address 525 Trade Street SE
Salem OR 97310

Party Chief R. Hill
Notes R. Hill

Witness L. Boge, H. Hanson

Seal

REGISTERED PROFESSIONAL LAND SURVEYOR

JOHN E. HOLLINGSWORTH

OREGON
JULY 9, 1988
691

RECEIVED BY
 Umatilla County Surveyor
 Date 6-88
 Rec'd By KA
 No. 88-39-B

