

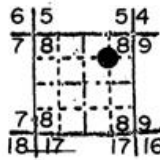
OREGON CORNER RESTORATION FORM

Section 8 Township 1N Range 35E

County Umatilla Date 1/5/88

F-8

Corner Designation



NE 1/16, S8

- Condition Report Only
- Not Found
- Renewed
- Unrecorded
- Surveyed In
- Referenced Out

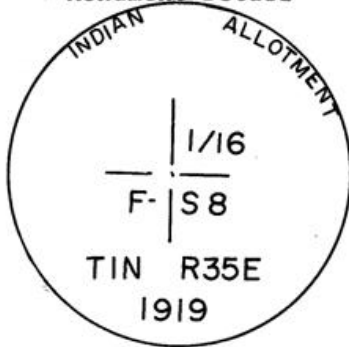
Previous Renewals/Surveys, etc.

Set in Indian Allotment surveys in 1919.

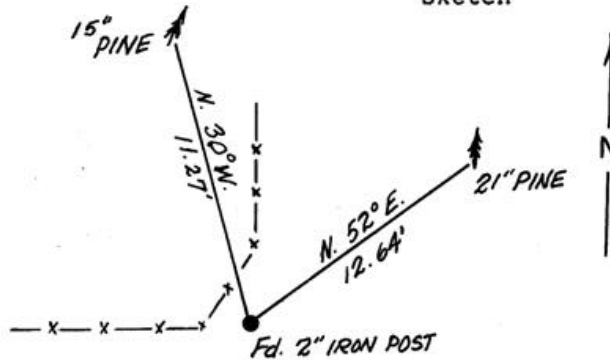
Monument(s) & Accessories Found: (Condition and Source)

Found 2" iron post with brass cap firmly set projecting 10" above ground. Orange Carsonite post with decal marked "Property Boundary - State Park Land Behind this Sign" 2.0' northeast.

Monument Detail



Sketch



Monument Set (Procedures and Description)

None

New Accessories

21" pine bears N52°E, 12.64' to 2 finish nails side and center marked "X" BT.
15" pine bears N30°W, 11.27' to 2 finish nails side and center marked "NE 1/16 S8 BT".

Location & Comments

Drawing not to scale.
References by hand compass and steel tape.

Compass Declination 20°E

Firm/Agency Oregon State Parks & Recreation Div.

Address 525 Trade Street SE Salem OR 97310

Party Chief R.Hill
Notes R.Hill

Witness L. Boge, H. Hanson

Seal

REGISTERED PROFESSIONAL LAND SURVEYOR

John E. Hollingsworth

OREGON
JULY 9, 1985
JOHN E. HOLLINGSWORTH
691

RECEIVED BY

Umatilla County Surveyor

Date 6-88

Rec'd By KA

No. 88-39-B

3