

**CERTIFIED RECORD OF LAND CORNER MONUMENTATION**

**HISTORY OF ORIGINAL CORNER ESTABLISHMENT:**

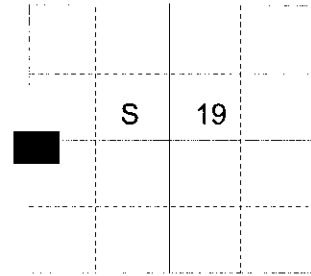
Corner originally established by Currin and Noland under GLO special contract dated May 4, 1887. Surveyor General record states:

Set basalt stone 10x8x7 ins. 6 ins. in the ground for 1/4 Sec. Cor. mkd. 1/4 on W. face, from which:

A Pine, 20 ins. in diam., bears N58°E, dist 15 lks. mkd 1/4 S BT.

A Fir 10 ins. in diam. bs. S30°W. dist 28 lks. mkd 1/4 S BT.

T 1 N R 35 E P-01



**DESCRIPTION OF CORNER EVIDENCE FOUND:**

Found a stone 10"x8"x6", marked 1/4 on West face, from which:

A 15 inch stump bears North 63° East, a distance of 11.0 feet, no marks evident.  
A 38 inch White Fir bears South 36° West, a distance of 17.55 feet, alive and vigorous with a healed blaze.

**DESCRIPTION OF MONUMENT AND ACCESSORIES I ESTABLISHED**

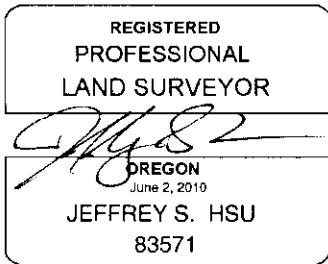
**TO PERPETUATE THE ORIGINAL LOCATION OF THIS CORNER:**

At the stone position, I set a 2 1/2" x 30" aluminum pipe with 2 1/2" aluminum cap marked as shown below, 29 inches in the ground, from which:

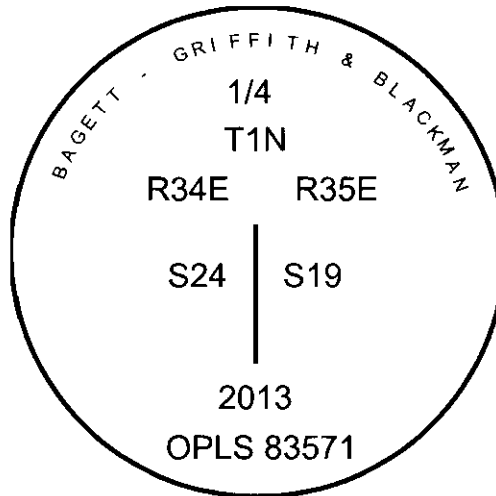
A 6 inch White Fir bears North 56° East, a distance of 20.65 feet, marked X BT.  
A 12 inch Western Larch bears North, a distance of 7.25 feet, marked 1/4 S19 BT.  
A 10 inch Western Larch bears North 51° West, a distance of 20.85 feet, marked 1/4 S24 BT.

No available trees in the Southwest quadrant.  
Corner falls approximately 40 feet South an East/West running gravel road.

I hereby certify that the corner was perpetuated on August 20, 2013.



Renewal Date: June 30, 2015



I used a steel tape and magnetic compass in the recovery of the bearing trees and establishment of new tree. I used 16° East magnetic declination and the bearings and distances are to the center of root crown on old bearing trees. Distance is to a 60d spike in the right hand side of the new trees. Bearing is to a brass washer marked OPLS 83571 in the lower BT blaze.

**RECEIVED BY**

Umatilla County Surveyor

Date: 9/26/2013

Rec'd By: *Day Tolbert*

No: 13-521-B

P-01