

OREGON CORNER RESTORATION FORM

Section 23 Township 1N Range 32E
 County Umatilla Date: May 15, 2002

Corner Designation: 1N32R19

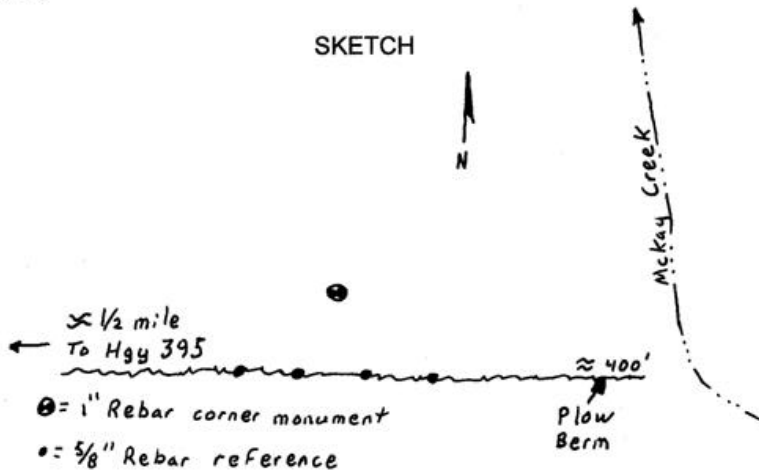
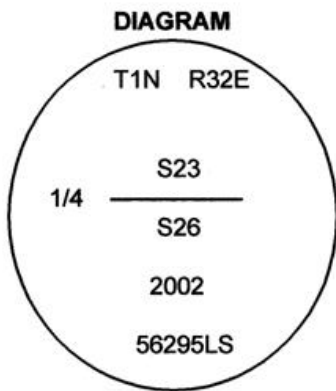
Condition Report Only
 Not found
 Remonumented
 Unrecorded
 Surveyed in
 Referenced out

Common quarter corner to sections 23 and 26, T1N, R32E, W.M., Umatilla County, Oregon.

Previous Renewals / Surveys, etc.

Corner originally set by Daniel Chaplin under contract #107 dated September 21, 1864. His record reads: Set post for 1/4 sec. corner in mound of earth with charred stake, pits, &c. as per instructions. The corner was re-established by Currin and Noland under special instructions dated May 4th 1887. Their record reads: Set a stone, 6x8x10ins., 7 ins. in the ground for the 1/4 sec. cor. marked 1/4 on N. face, dug pits, 18x18x12 ins., E. and W. 5 1/2 ft. dist. from stone and raised a mound of earth 1 1/2 ft. high, 3 1/2 ft. base over it. ODOT Highway Right of Way map No. 8B-15-12 dated August, 1959 says Stone fd.

Monument and Accessories found: (condition and source)
 None. The point falls in a plowed field.



MONUMENT (S) AND ACCESSORIES SET (Procedures and Description)

I set a 1" x 24" iron rebar with a 2" Aluminum cap stamped as shown in the diagram above at the position of the original stone which I determined from the Highway Right of Way monuments. The monument was set 2' below the surface of the field.

For references, I set four 5/8" by 24" rebars with 1 1/8" orange plastic caps stamped WTS and 56295LS as described below:

- an iron rebar bears S48°42'58"W, 42.37 feet 2 feet below the surface;
- an iron rebar bears S29°09'01"W, 32.25 feet 2 feet below the surface;
- an iron rebar bears S28°40'43"E, 31.78 feet 2 feet below the surface;
- an iron rebar bears S48°02'52"E, 41.91 feet 2 feet below the surface;

The monument and references were tied using a LIECA system 300 RTK GPS.

Location and comments

Compass Declination

Surveyors Seal

RECEIVED BY:
 Umatilla County Surveyor
 Date: 6-02
 Rec'd By: KK
 No. 02-161-B

Firm / Agency
 Witness Tree Surveying
 Address
 P.O. Box G
 Pilot Rock, Or. 97868
 Party Chief
 Stephen K, Haddock

**REGISTERED
 PROFESSIONAL
 LAND SURVEYOR**

Stephen K. Haddock

OREGON
 JULY 9, 2001
STEPHEN K. HADDOCK
 56295LS

RENEWAL DATE 6-30-03