

OREGON CORNER RESTORATION FORM

Section 3 Township 1N Range 32E
 County Umatilla Date: 06-22-2005

Corner Designation: 1N32EC13

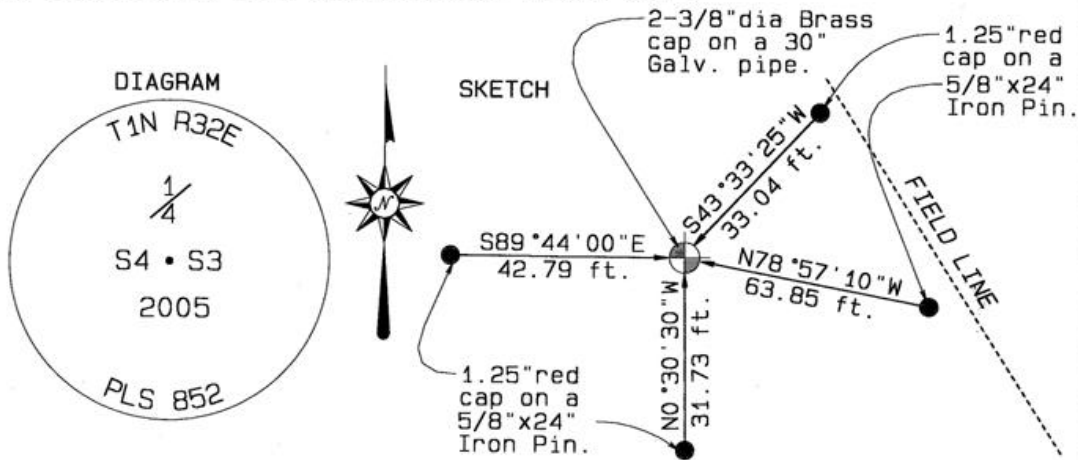
_____	Condition Report Only
_____	Not Found
<u> x </u> _____	Remonumented
_____	Unrecorded
<u> x </u> _____	Surveyed In
<u> x </u> _____	Referenced Out

Previous Renewals / Surveys, etc.

First surveyed in 01-11-1865 by D. Chaplin. Set stone 14"x12"x6"
 Survey referenced location in 10-29-1913 by John Kimbrell.

Monument and Accessories Found: (condition and source)

Located stone with 1/4 chiseled on West face at the record distance.
 Found imbedded in the ground within 3" of being online with the Township
 Section corner of 33, 34, 4, & 3 and the Section corner of 9, 10, 16 & 15.
 Stone was in good condition with a corner piece broken out. The dimensions
 of the found stone were approximately 12"x 9"x 6".



Monument and Accessories SET: (Procedure and Description)

Set a 2-3/8" dia. Brass Cap on a 1" ID x 30" Galvanized pipe approximately 3" above the ground level. Set original found stone of record at the base of the West side of the Galvanized pipe. Filled in with stones and dirt. Built a 24" dia. rock crib around the monument to be flush with the top of the Brass cap monument. Recorded a GPS measurement of the stamped cap location.

REFERENCES SET

Set four reference monuments. Each are a 1.25" dia. Red plastic cap on a 5/8" dia. x 24" long steel iron pin and are approximately 4" above the surface of the ground. Built rock cribs around each for monumentation and safety Recorded GPS measurements of each for location, bearing and distance. No signs were placed at this time.

Single point GPS tie.
 Latitude 45°35'41.2"N
 Longitude 118°48'26.7"W
 NAD 83(1991)

Oregon State Plane Coord. - North Zone
 Northing 707484.89'
 Easting 8635322.30'
 Ellipsoidal Height 1344.27'

LOCATION AND COMMENTS:

Beginning at the intersection of Hwy 395 and Coombs Canyon Rd go West past the "Sparks Tri-Station" monument approximately 1/2 mile to the intersection of Straughan Road from the North. Go South up the hill to the West side of the top hill side, approximately 1/2 mile horizontal distance.

RECEIVED BY:

Firm / Agency

Date: 7-05
 Rec'd By: KK
 No. 05-150-B

Haddock Surveying
 P. O. Box 1574
 Pendleton, OR 97801
 (541) 276-2174

Surveyors Seal

REGISTERED
 PROFESSIONAL
 LAND SURVEYOR

David L. Haddock

OREGON
 JULY 12, 1968
 DAVID L. HADDOCK
 852

RENEWS 6-30-~~05~~07