

OREGON CORNER RESTORATION FORM

Section 34 Township 1N Range 31E
 County Umatilla Date: October 3, 2001

Corner Designation: 1N31Z15

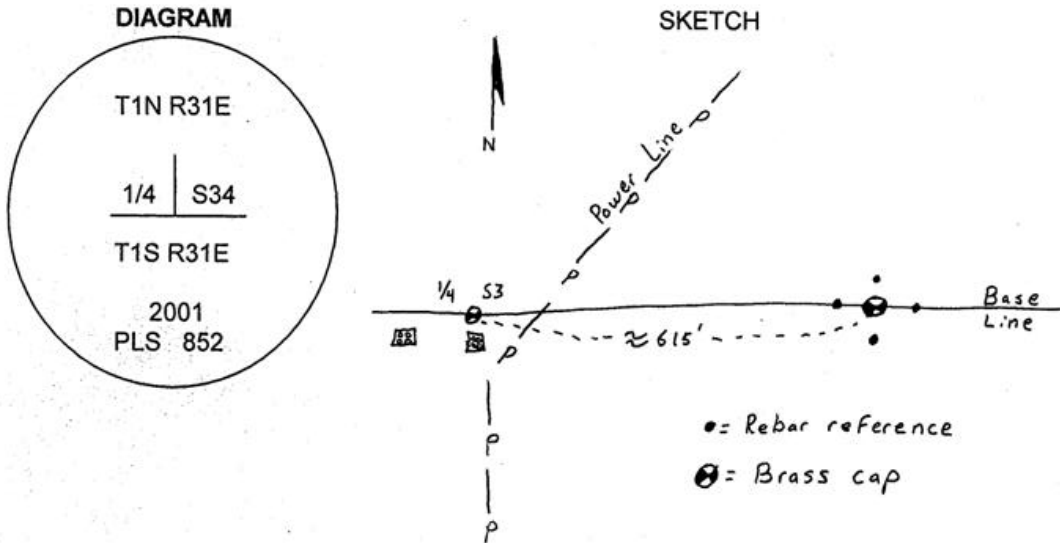
South 1/4 section corner to section 34, T1N, R31E,
 W.M., Umatilla County, Oregon.

Condition Report Only
 Not found
 Remonumented
 Unrecorded
 Surveyed in
 Referenced out

Previous Renewals / Surveys, etc.

The corner was originally set by Josiah Burnett under contract No. 92 dated September 12, 1860. His record reads: Set post for 1/4 sec. corner. Drove charred stake & raised mound with trench as per instructions.

Monument and Accessories found: (condition and source)
 None. The point falls in a plowed field.



MONUMENT (S) AND ACCESSORIES SET (Procedures and Description)

At the proportionate point I set a 30" x 1 1/2" G.I.P. with a 2 1/2" Brass cap stamped as shown in the diagram above 20" below the surface.

For references, I set four 5/8" by 24" rebars with 1 1/4" red plastic caps stamped ORLS 852, and WALS 13922 as described below:

- an iron rebar bears N4°33'00"E, 24.03 feet, 20" below the surface;
- an iron rebar bears S80°10'51"E, 24.28 feet, 20" below the surface;
- an iron rebar bears S3°07'51"W, 24.35 feet, 20" below the surface;
- an iron rebar bears S85°19'39"W, 23.04 feet, 20" below the surface;

The monument and references were tied using a LIECA SYSTEM 300 RTK GPS.

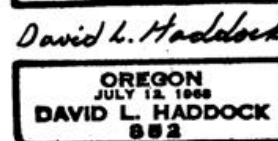
Location and comments
 OR SPC Oregon North 1983-91
 N = 678003.06
 E = 8606345.17

Compass Declination

Surveyors Seal

RECEIVED BY:
 Umatilla County Surveyor
 Date: 12/20/2001
 Rec'd By: DHK
 No. 01-206-C

Firm / Agency
 Haddock Surveying
 Address
 P.O. Box 1574
 Pendleton, Or. 97801
 Party Chief
 Stephen K, Haddock



RENEWS 6-30-03