

OREGON CORNER RESTORATION FORM

SECTION 20,21,28,29 TOWNSHIP 1 NORTH RANGE 30 EAST R-9
 COUNTY : UMATILLA DATE: AUGUST 2007

CORNER DESIGNATION
 SECTION CORNER

___ CONDITION REPORT ONLY
 X NOT FOUND
 ___ RENEWED
 ___ UNCOVERED
 X SURVEYED IN
 X REFERENCED

PREVIOUS RENEWALS / SURVEYS, ETC.

ORIGINALLY SURVEYED IN 1858 BY THOMPSON UNDER CONTRACT #79. HE SET A POST IN A MOUND OF EARTH.
 SURVEYED IN 1859 BY THOMPSON UNDER CONTRACT #83. HE SET A POST IN A MOUND OF EARTH.
 SURVEYED IN 1860 BY CARTEE UNDER CONTRACT #88. HE SET A POST IN A MOUND OF EARTH.

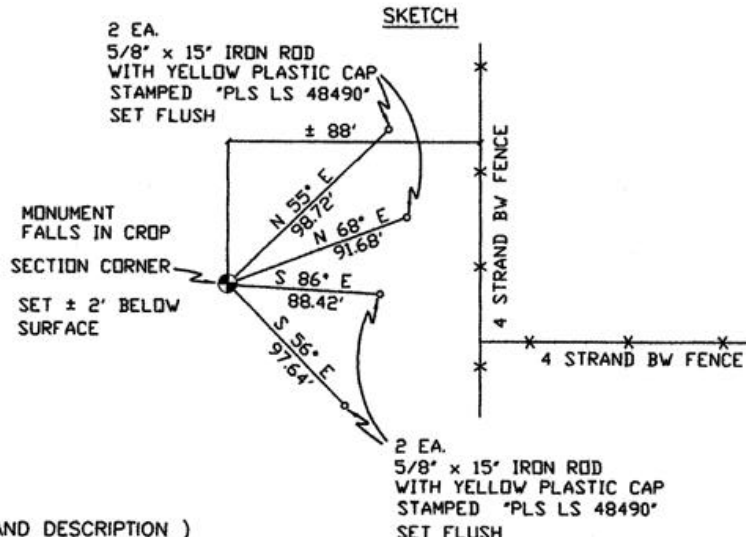
MONUMENTS AND ACCESSORIES FOUND: CONDITION AND SOURCE
 NONE

MONUMENT DETAIL



NAD 83/91
 OREGON STATE PLANE
 INTERNATIONAL FEET

687932.4987
 8565907.5733



MONUMENT SET (PROCEDURES AND DESCRIPTION)

SET 2 3/8" BRASS CAP

DOUBLE PROPORTIONED IN THE NORthing FROM THE FOUND 1" IRON ROD MARKING THE EAST 1/4 CORNER SECTION 20 AND THE FOUND ROCK MOUND MARKING THE EAST 1/4 CORNER OF SECTION 32 AND THE EASTING FROM THE FOUND 2 3/8" BRASS CAP MARKING THE NORTHWEST SECTION CORNER OF SECTION 30 AND THE FOUND POST MARKING THE NORTH 1/4 CORNER OF SECTION 28.

NEW ACCESSORIES FROM WHICH

- A 5/8" x 15" IRON ROD WITH A PLASTIC CAP STAMPED "PLS LS 48490" LIES N 55° E, 98.72 FEET.
- A 5/8" x 15" IRON ROD WITH A PLASTIC CAP STAMPED "PLS LS 48490" LIES N 68° E, 91.68 FEET.
- A 5/8" x 15" IRON ROD WITH A PLASTIC CAP STAMPED "PLS LS 48490" LIES S 86° E, 88.42 FEET.
- A 5/8" x 15" IRON ROD WITH A PLASTIC CAP STAMPED "PLS LS 48490" LIES S 56° E, 97.64 FEET.

LOCATION AND COMMENTS

FROM INTERSECTION OF SLUSHER CANYON WITH WEST BOUNDARY OF TOWNSHIP 1 NORTH, RANGE 30 EAST W.M. GO NORTH ± 0.7 MILES THEN GO EAST ± 2.0 MILES TO CORNER.

COMPASS DEC.

17° EAST

FIRM/AGENCY

PRIMM LAND SURVEYING
 1340 N.E. 4TH STREET
 P.O. BOX 1322
 HERMISTON, OREGON 97838

PARTY CHIEF

KEITH P. PRIMM

NOTES

WITNESS

BRIDGET WOOLMAN

SURVEYOR'S SEAL

REGISTERED
 PROFESSIONAL
 LAND SURVEYOR

Keith P. Primm
 OREGON
 JULY 12, 2005
 KEITH P. PRIMM
 48490

EXPIRATION DATE: 31 JAN 08

07-276-C