

# OREGON CORNER RESTORATION FORM

SECTION 21,22,27,28 TOWNSHIP 1 NORTH RANGE 30 EAST R-13  
 COUNTY : UMATILLA DATE: AUGUST 2007

CORNER DESIGNATION

SECTION CORNER

- CONDITION REPORT ONLY
- NOT FOUND
- RENEWED
- UNCOVERED
- SURVEYED IN
- REFERENCED

PREVIOUS RENEWALS / SURVEYS, ETC.

ORIGINALLY SURVEYED IN 1858 BY THOMPSON UNDER CONTRACT #79. HE SET A POST IN A MOUND OF EARTH.  
 SURVEYED IN 1859 BY THOMPSON UNDER CONTRACT #83. HE SET A POST IN A MOUND OF EARTH.  
 SURVEYED IN 1860 BY CARTEE UNDER CONTRACT #88. HE SET A POST IN A MOUND OF EARTH.

MONUMENTS AND ACCESSORIES FOUND: CONDITION AND SOURCE

FOUND ROCK MOUND

MONUMENT DETAIL

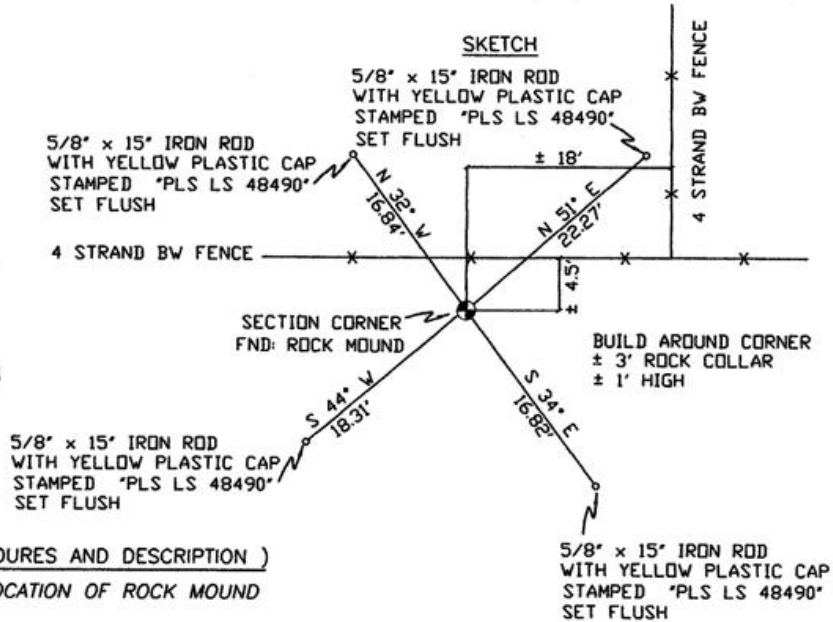


NAD 83/91  
 OREGON STATE PLANE  
 INTERNATIONAL FEET

688053.0912  
 8571201.2723



SKETCH



MONUMENT SET ( PROCEDURES AND DESCRIPTION )

SET 2 3/8" BRASS CAP AT LOCATION OF ROCK MOUND

NEW ACCESSORIES FROM WHICH

- A 5/8" x 15" IRON ROD WITH A PLASTIC CAP STAMPED "PLS LS 48490" LIES N 32° W, 16.84 FEET.
- A 5/8" x 15" IRON ROD WITH A PLASTIC CAP STAMPED "PLS LS 48490" LIES N 51° E, 22.27 FEET.
- A 5/8" x 15" IRON ROD WITH A PLASTIC CAP STAMPED "PLS LS 48490" LIES S 34° E, 16.82 FEET.
- A 5/8" x 15" IRON ROD WITH A PLASTIC CAP STAMPED "PLS LS 48490" LIES S 44° W, 18.31 FEET.

LOCATION AND COMMENTS

FROM INTERSECTION OF ALKALI CANYON WITH SOUTH BOUNDARY OF TOWNSHIP 1 NORTH, RANGE 30 EAST W.M. GO WEST ± 1.9 MILES THEN GO NORTH ± 2.0 MILES TO CORNER.

COMPASS DEC.

17° EAST

FIRM/AGENCY

PRIMM LAND SURVEYING  
 1340 N.E. 4TH STREET  
 P.O. BOX 1322  
 HERMISTON, OREGON 97838

PARTY CHIEF

BRIT L. PRIMM

NOTES

WITNESS

CODY L. HANSEN

SURVEYOR'S SEAL

REGISTERED  
 PROFESSIONAL  
 LAND SURVEYOR

*Keith P. Primm*  
 OREGON  
 JULY 12, 2005  
 KEITH P. PRIMM  
 48490

EXPIRATION DATE: 31 JAN 08

07-276-C