

# OREGON CORNER RESTORATION FORM

SECTION 8,9,16,17 TOWNSHIP 1 NORTH RANGE 30 EAST J-9  
 COUNTY : UMATILLA DATE: AUGUST 2007

CORNER DESIGNATION  
 SECTION CORNER

CONDITION REPORT ONLY  
 NOT FOUND  
 RENEWED  
 UNCOVERED  
 SURVEYED IN  
 REFERENCED

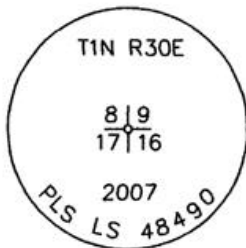
PREVIOUS RENEWALS / SURVEYS, ETC.

ORIGINALLY SURVEYED IN 1858 BY THOMPSON UNDER CONTRACT #79. HE SET A POST IN A MOUND OF EARTH.  
 SURVEYED IN 1859 BY THOMPSON UNDER CONTRACT #83. HE SET A POST IN A MOUND OF EARTH.  
 SURVEYED IN 1860 BY CARTEE UNDER CONTRACT #88. HE SET A POST IN A MOUND OF EARTH.

MONUMENTS AND ACCESSORIES FOUND: CONDITION AND SOURCE

NONE

MONUMENT DETAIL



NAD 83/91  
 OREGON STATE PLANE  
 INTERNATIONAL FEET

698513.0365  
 8565842.1968

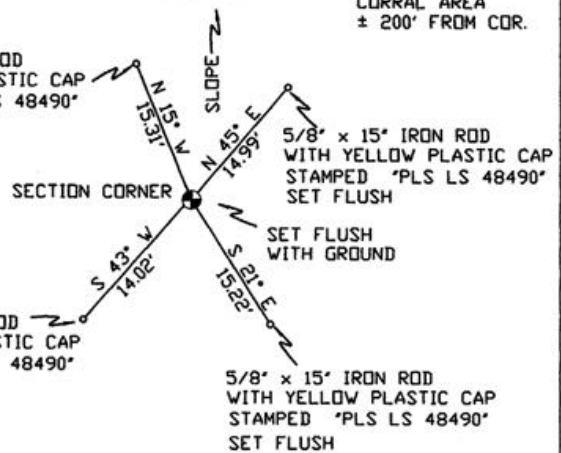


CORRAL AREA  
 ± 200' FROM COR.

5/8" x 15" IRON ROD  
 WITH YELLOW PLASTIC CAP  
 STAMPED "PLS LS 48490"  
 SET FLUSH

5/8" x 15" IRON ROD  
 WITH YELLOW PLASTIC CAP  
 STAMPED "PLS LS 48490"  
 SET FLUSH

SKETCH



CORRAL AREA  
 ± 200' FROM COR.

MONUMENT SET ( PROCEDURES AND DESCRIPTION )

SET 2 3/8" BRASS CAP

DOUBLE PROPORTIONED IN THE NORthing FROM THE SET 2 3/8" BRASS CAP MARKING THE NORTHEAST SECTION CORNER OF SECTION 5 AND THE FOUND 2 ROCKS MARKING THE NORTHEAST SECTION CORNER OF SECTION 20 AND THE EASTING FROM THE FOUND ROCK MOUND MARKING THE NORTH 1/4 CORNER OF SECTION 17 AND THE FOUND OLD POST AND ROCK MOUND MARKING THE SOUTH 1/4 CORNER OF SECTION 11.

NEW ACCESSORIES FROM WHICH

A 5/8" x 15" IRON ROD WITH A PLASTIC CAP STAMPED "PLS LS 48490" LIES N 15° W, 15.31 FEET.  
 A 5/8" x 15" IRON ROD WITH A PLASTIC CAP STAMPED "PLS LS 48490" LIES N 45° E, 14.99 FEET.  
 A 5/8" x 15" IRON ROD WITH A PLASTIC CAP STAMPED "PLS LS 48490" LIES S 21° E, 15.22 FEET.  
 A 5/8" x 15" IRON ROD WITH A PLASTIC CAP STAMPED "PLS LS 48490" LIES S 43° W, 14.02 FEET.

LOCATION AND COMMENTS

FROM INTERSECTION OF ALKALI CANYON WITH WEST BOUNDARY OF TOWNSHIP 1 NORTH, RANGE 30 EAST W.M. GO SOUTH ± 1.3 MILES THEN GO EAST ± 2.0 MILES TO CORNER.

COMPASS DEC.

17° EAST

FIRM/AGENCY

PRIMM LAND SURVEYING  
 1340 N.E. 4TH STREET  
 P.O. BOX 1322  
 HERMISTON, OREGON 97838

PARTY CHIEF

KEITH P. PRIMM

NOTES

WITNESS

BRIT L. PRIMM

SURVEYOR'S SEAL

REGISTERED  
 PROFESSIONAL  
 LAND SURVEYOR

*Keith P. Primm*  
 OREGON  
 JULY 12, 2005  
 KEITH P. PRIMM  
 48490

EXPIRATION DATE: 31 JAN 08

07-276-C