

OREGON CORNER RESTORATION FORM

T1N R29E Z1

Section 31, Township 1N, Range 29E,
County Umatilla, Date April 5, 2005.

- Condition Report
- Not Found
- Remonumented
- Unrecorded
- Surveyed in
- Referenced out

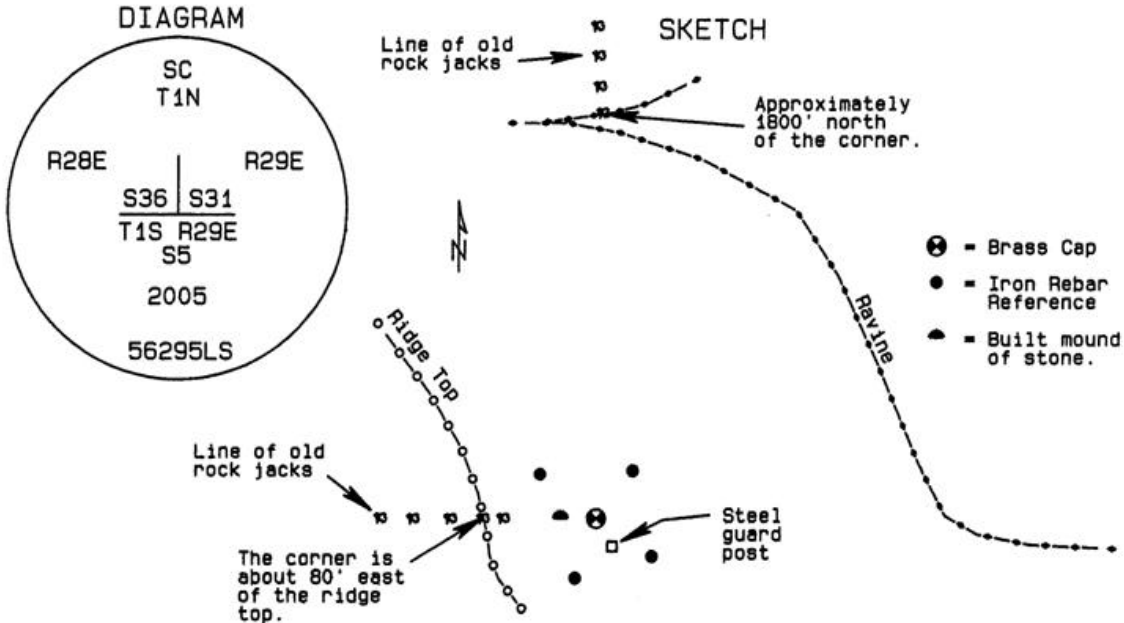
Township corner common to Township 1 North, Ranges 28 and 29 East, W.M., Umatilla County, Oregon.

Previous Renewals / Surveys, etc.

The corner was originally set by David P. Thompson under Contract No. 79 dated July 26, 1858. His record Reads: Set post for corner to Township 1 North, of Ranges 28 and 29 East and build mound of earth &c as per instructions.

Monument and accessories found: (Condition and source)

I found a basalt stone 16" x 7" x 5" with a "+" on top and the letters CS on the side. Four inches of the stone was visible above the surface of the ground. The stone was under a corner rock jack from the remains of fences to the north and west. The stone was set directly on top of the remains of the original wooden post.



Monument and accessories set: (Procedures and description)

At the position of the decayed post I set a 2 3/8" brass cap on a 1 1/2" x 30" galvanized iron pipe 30" in the ground with an 18" collar of stone. I built a mound of stone with a 4' base by 2' high, 4 feet west of the cap. I set a 6' steel guard post along side with a county monument sign attached. I buried the stone along side.

For references I set four 5/8" x 24" iron rebars with 1.25" orange plastic caps attached stamped WTS and 56295LS:

- an iron rebar bears N37°35'30"E 29.71 feet, 6" below the surface;
- an iron rebar bears N51°54'59"W 35.25 feet, 6" below the surface;
- an iron rebar bears S19°52'00"W 30.81 feet, 6" below the surface;
- an iron rebar bears S56°26'00"E 33.21 feet, 6" below the surface;

The monument and references were tied with a Trimble R7/R8 GPS system using static surveying procedures. Bearings and distances are grid.

Location and Comments
SPC Oregon North, NAD 83-91
Northing = 676,786.00 ift
Easting = 8,522,868.07 ift

Compass Declination

Surveyor's Seal

Witnessed By:
RECEIVED BY:
Umatilla County Surveyor
Date: 5-05
Rec'd By: KK
No. 05-111-C

Firm / Agency
Witness Tree Surveying
P.O. Box 6
Pilot Rock, OR 97868
Party Chief
Stephen K. Haddock, PLS

REGISTERED
PROFESSIONAL
LAND SURVEYOR

Stephen K. Haddock

OREGON
JULY 9, 2001
STEPHEN K. HADDOCK
56295LS

RENEWAL DATE 6-30-05