

OREGON CORNER RESTORATION FORM

SECTION 8,9,17 & 16 TOWNSHIP 1 NORTH RANGE 29 EAST J-9
 COUNTY : UMATILLA DATE: JUNE 2007

CORNER DESIGNATION
 SECTION CORNER

— CONDITION REPORT ONLY
 NOT FOUND
 — RENEWED
 — UNCOVERED
 SURVEYED IN
 REFERENCED

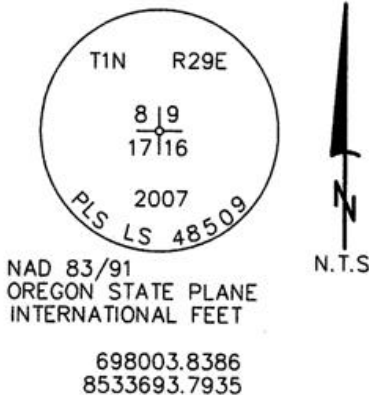
PREVIOUS RENEWALS / SURVEYS, ETC.

ORIGINALLY SURVEYED IN 1858 BY THOMPSON UNDER CONTRACT #79. HE SET A POST IN A MOUND OF EARTH.
 SURVEYED IN 1859 BY THOMPSON UNDER CONTRACT #83. HE SET A POST IN A MOUND OF EARTH.
 SURVEYED IN 1860 BY CARTEE UNDER CONTRACT #88. HE SET A POST IN A MOUND OF EARTH.

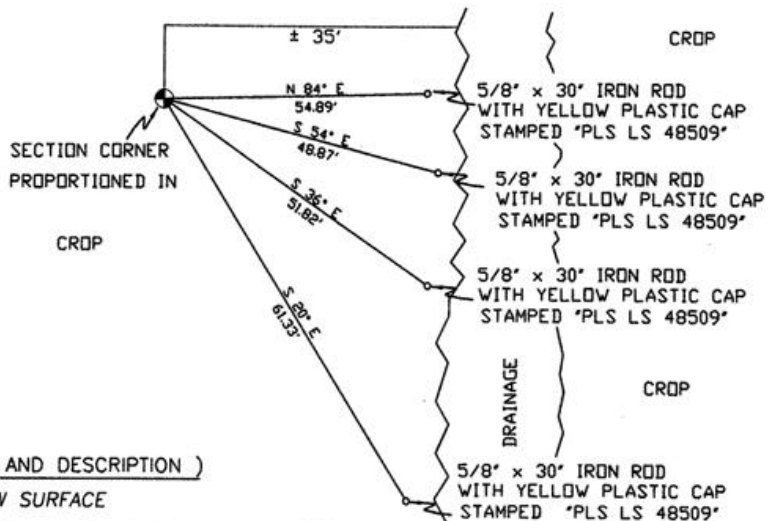
MONUMENTS AND ACCESSORIES FOUND: CONDITION AND SOURCE

NONE

MONUMENT DETAIL



SKETCH



MONUMENT SET (PROCEDURES AND DESCRIPTION)

SET 2 3/8" BRASS CAP ± 2' BELOW SURFACE

DOUBLE PROPORTIONED IN THE NORTHING FROM THE FOUND 2 3/8" B.C. PREVIOUSLY SINGLE PROPORTIONED IN MARKING THE N.W. CORNER OF SECTION 4 AND THE FOUND ROCK MOUND MARKING THE N.W. CORNER OF SECTION 21, AND THE EASTING FROM THE FOUND ROCK MOUND MARKING THE N 1/4 CORNER OF SECTION 18 AND THE FOUND ROCK MOUND MARKING THE N.W. CORNER OF SECTION 15.

NEW ACCESSORIES FROM WHICH

- A 5/8" x 30" IRON ROD WITH A PLASTIC CAP STAMPED "PLS LS 48509" LIES N 84° E, 54.89 FEET.
- A 5/8" x 30" IRON ROD WITH A PLASTIC CAP STAMPED "PLS LS 48509" LIES S 54° E, 48.87 FEET.
- A 5/8" x 30" IRON ROD WITH A PLASTIC CAP STAMPED "PLS LS 48509" LIES S 36° E, 51.82 FEET.
- A 5/8" x 30" IRON ROD WITH A PLASTIC CAP STAMPED "PLS LS 48509" LIES S 20° E, 61.33 FEET.

LOCATION AND COMMENTS

FROM INTERSECTION OF BUTTER CREEK WITH WEST BOUNDARY OF TOWNSHIP 1 NORTH, RANGE 29 EAST W.M. GO NORTH ± 2.2 MILES THEN GO EAST ± 2 MILES TO CORNER

COMPASS DEC.

17° EAST

FIRM/AGENCY

PRIMM LAND SURVEYING
 1340 N.E. 4TH STREET
 P.O. BOX 1322
 HERMISTON, OREGON 97838

PARTY CHIEF

BRIT L. PRIMM

NOTES

WITNESS

CODY L. HANSEN

SURVEYOR'S SEAL

REGISTERED
 PROFESSIONAL
 LAND SURVEYOR

Brit L. Primm
 OREGON
 JULY 13, 1999
 BRIT L. PRIMM
 48509

EXPIRATION DATE: 31 JAN 08

07-260-C