

OREGON CORNER RESTORATION FORM

SECTION 10,11,15 & 14 TOWNSHIP 1 NORTH RANGE 29 EAST J-17
 COUNTY : UMATILLA DATE: JUNE 2007

CORNER DESIGNATION
 SECTION CORNER

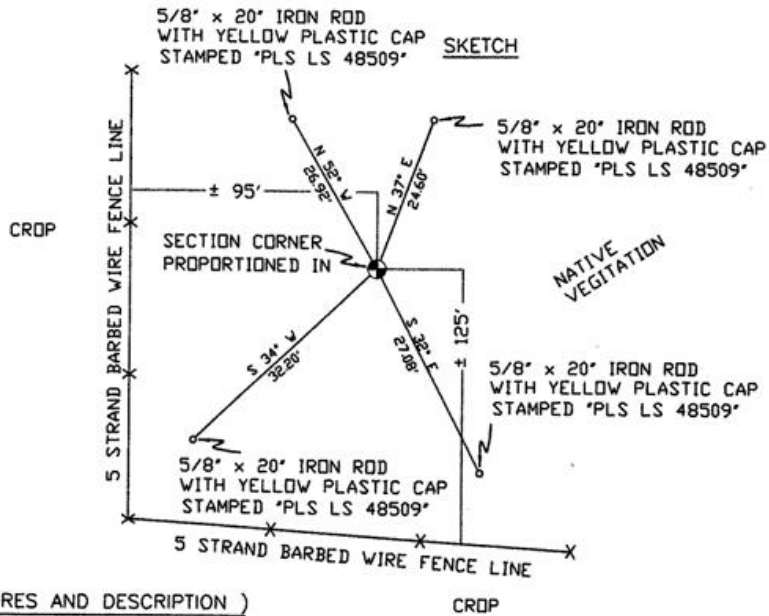
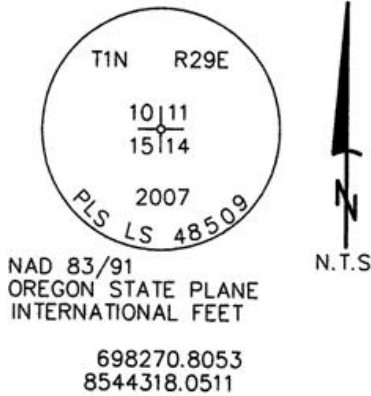
CONDITION REPORT ONLY
 NOT FOUND
 RENEWED
 UNCOVERED
 SURVEYED IN
 REFERENCED

PREVIOUS RENEWALS / SURVEYS, ETC.

ORIGINALLY SURVEYED IN 1858 BY THOMPSON UNDER CONTRACT #79. HE SET A POST IN A MOUND OF EARTH.
 SURVEYED IN 1859 BY THOMPSON UNDER CONTRACT #83. HE SET A POST IN A MOUND OF EARTH.
 SURVEYED IN 1860 BY CARTEE UNDER CONTRACT #88. HE SET A POST IN A MOUND OF EARTH.

MONUMENTS AND ACCESSORIES FOUND: CONDITION AND SOURCE
 NONE

MONUMENT DETAIL



MONUMENT SET (PROCEDURES AND DESCRIPTION)

SET 2 3/8" BRASS CAP WITH ± 3' DIA. ROCK COLLAR ± 1' HIGH
 DOUBLE PROPORTIONED IN THE NORTHING FROM FND ROCK MOUND MARKING THE W 1/4 CORNER OF SECTION 11 AND THE FND 2 3/8" B.C. PREVIOUSLY DOUBLE PROPORTIONED IN MARKING THE N.W. CORNER OF SECTION 26, AND THE EASTING FROM THE FOUND ROCK MOUND MARKING THE N.E. CORNER OF SECTION 13 AND THE FOUND WOOD POST MARKING THE N 1/4 CORNER OF SECTION 10.

NEW ACCESSORIES FROM WHICH

- A 5/8" x 20" IRON ROD WITH A PLASTIC CAP STAMPED "PLS LS 48509" LIES N 52° W, 26.92 FEET.
- A 5/8" x 20" IRON ROD WITH A PLASTIC CAP STAMPED "PLS LS 48509" LIES N 37° E, 24.60 FEET.
- A 5/8" x 20" IRON ROD WITH A PLASTIC CAP STAMPED "PLS LS 48509" LIES S 32° E, 27.08 FEET.
- A 5/8" x 20" IRON ROD WITH A PLASTIC CAP STAMPED "PLS LS 48509" LIES S 34° W, 32.20 FEET.

LOCATION AND COMMENTS

FROM INTERSECTION OF ALKALI CANYON WITH EAST BOUNDARY OF TOWNSHIP 1 NORTH, RANGE 29 EAST W.M. GO SOUTH ± 1.4 MILES THEN GO WEST ± 2 MILES TO CORNER

COMPASS DEC.

17° EAST

FIRM/AGENCY

PRIMM LAND SURVEYING
 1340 N.E. 4TH STREET
 P.O. BOX 1322
 HERMISTON, OREGON 97838

PARTY CHIEF

KEITH P. PRIMM

NOTES

WITNESS

CODY L. HANSEN

SURVEYOR'S SEAL

REGISTERED PROFESSIONAL LAND SURVEYOR

Brit L. Primm

OREGON
 JULY 13, 1999
 BRIT L. PRIMM
 48509

EXPIRATION DATE: 31 JAN 08

07-260-C