

- ① 536 Set point proportionate between the N.E. corner of Sec. 5 and the S/4 of Sec. 35 which was set in 1941. Found 3/8" pin with cap set in 1976, N73°50'41"W, 16.21 feet from new corner.
- ② 30/31 Set new corner by tangent offset between S/4 of Sec. 35 and the S.E. corner of Sec. 32. Found Brass Cap set by Staebler in 1972, see county records no. H-106-B.
- ③ N/4 Sec 6 Set by single proportionate between the S/4 of Sec. 35 and the N.E. corner of Sec. 5 on closing line between the S.W. corner of Sec. 31 and the S/4 of Sec. 31.
- ④ 31 Set by single proportionate between the S/4 of Sec. 35 and the N.E. corner of Sec. 5 on closing line between the S/4 of Sec. 31 and the S.E. corner of Sec. 31. Found 3/8" pin set by Harris in 1976, N38°11'00"W, 21.09 feet from new corner.
- ⑤ 531/532 Set corner by tangent offset method between the S/4 of Sec. 35 and the S.E. corner of Sec. 32. No evidence of old corner found.
- ⑥ N/4 Sec 5 Set corner by single proportionate between the S/4 of Sec. 35 and the N.E. corner of Sec. 5. No evidence of old stone was found. Found 3/8" pin set by Shea in 1972, S71°47'10"E, 20.51 feet from new corner. Corner is 6" under surface of road.
- ⑦ 3/4 Sec 32 Set corner by tangent offset method between the S/4 of Sec. 35 and the S.E. corner of Sec. 32. No evidence of old corner found. Corner is in line with old tree line running North. Corner is 6" under surface of road.
- ⑧ 532 Found old 1 1/2" pipe (inside dia), first record of corner was 1974, see county records no. 56/54 I-154-C. Set Brass Cap in place of pipe 6" under surface.
- ⑨ 532/533 Found 2" pipe bent and W.C. North 16.50 feet Under pipe found stone with X on it and G.L.O. notes show set since 1941. Set Brass Cap in place of bent pipe 6" under surface of road.
- ⑩ N/4 Sec 4 Set Brass Cap mid point between the N.W. corner of Sec. 4 and the N.E. corner of Sec. 4 on line between the standard corners.
- ⑪ 533 Found 1" pipe (inside dia) with mound of stones around it. County records shows pipe found by Wallulis in 1963, old record no. G-566-Ax. Set Brass Cap in place of pipe.
- ⑫ 533/534 Found 2 1/2" pipe (inside dia) and 30" long with bottom flared. County records show pipe in 1910, Kimbrell. Set Brass Cap in place of pipe.
- ⑬ N/4 Sec 3 Found 1 1/2" pipe (inside dia) and 18" long. County records show pipe as late as 1963, county no. G-566-Ax. Set Brass Cap in place of pipe.
- ⑭ 5/4 Sec 34 Set Brass Cap by tangent offset method between the S.E. corner of Sec. 34 and the S.E. corner of Sec. 36. No evidence of old corner found.
- ⑮ 534 Found two 1" pipe (inside dia) about 2" long, one down about 6" and the other down about 2" under surface of road. In 1950 Fraley found a 1" pipe, county no. G-576-Ax. Set Brass Cap in place of pipe.
- ⑯ 534/535 Set Brass Cap by tangent offset method between the S.W. corner of Sec. 34 and the S.E. corner of Sec. 36. Found 1/2" pin set by Edwards in 1978, N20°16'07"W, 2.95 feet from B.C.
- ⑰ N/4 Sec 2 Set Brass Cap by single proportionate method between the N.E. corner of Sec. 1 which is a 3/4" pipe with wood under it and the N.W. corner of Sec. 2, a 1" pipe. Found a 3/8" pin N78°19'04"W, 9.11 feet; set by Telek, county no. L-18-B, from B.C. Found #19 spike N12°56'00"W, 1.90 feet from B.C. set by Cramer, county no. G-49-A.
- ⑱ 5/4 Sec 35 Set Brass Cap by tangent offset method between the S.W. corner of Sec. 34 and the S.E. corner of Sec. 35. Found #19 spike north 1.40 feet from B.C.
- ⑲ 535 Set Brass Cap by single proportionate method between the N.E. corner of Sec. 1 and N.W. corner of Sec. 2. Found 3/4" pipe (inside dia) set by Fraley in 1950, county nos. G-558-Ax and G-551-Ax. Pipe was set incorrectly, S89°46'42"W, 18.12 feet from B.C.
- ⑳ 535/536 Found 1 1/2" pipe (inside dia) and 2" long with 1/2" pin inside. Records show pipe being used as late as 1910. Set Brass Cap in place of pipe for corner.
- ㉑ N/4 Sec 1 Set Brass Cap by single proportionate between the N.E. corner of Sec. 1 and the N.W. corner of Sec. 2. Found 1 1/2" pipe N35°48'30"W, 13.58 feet from B.C., pipe was set by Fraley in 1950, county no. G-551-Ax.
- ㉒ 5/4 Sec 36 Set Brass Cap by tangent offset method between the S.W. corner of Sec. 36 and the S/4 of Sec. 31. Found 1/2" pin 351°46'55"E, 4.43 feet from B.C., set by Telek in 1978, county no. P-92-C.
- ㉓ 536 Set Brass Cap in place of 3/4" pipe, 18" long and 18" under pipe found old wood stake. Also found 1" pipe N05°42'47"E, 29.29 feet from B.C.
- ㉔ 536/531 Set Brass Cap by tangent offset method between the S.W. corner of Sec. 36 and the S/4 of Sec. 31. Found 3/8" pin 52°47'12"E, 5.75 feet set by Telek in 1978, county no. P-92-C.
- ㉕ 5/4 Sec 1 Set Brass Cap in place of bent 3/4" pipe (inside dia) and 24" long set by Stranix and Otrner in 1949, county no. G-538-Ax.
- ㉖ 2/1 Found 1 1/4" pipe next to W.C., Edwards notes a 1 1/4" pipe in 1975, county no. H-25-B. Found P.H. nail in road and replaced it with Brass Cap.
- ㉗ 3/2 Found 3/8" x 12" pin as Fraley did in 1950, county no. G-565-Ax. Replaced pin with Brass Cap.
- ㉘ center sec 3 Found 3/8" pin set by Fraley in 1950, county no. G-565-Ax. Set Brass Cap in place of pin.
- ㉙ 4/3 Found 3/4" x 5" pin. Records show: Fraley found a spike in 1950, county no. G-565-Ax, Staebler found 1/2" sq bolt in 1974, county no. I-154-A and Palmer notes a 3/8" pipe in 1976, county no. H-16-A. Replaced pin with Brass Cap.

Bearings are based on ties to N.A.S. stations, Hermonston Butte and Hermar.
 All bearings and distances are true.
 G = +00°51'50"
 Grid Factor = 0.9999369

● denotes Brass Cap
 ○ denotes monument found as notes

SHEET 1 of 2



RECEIVED BY
 Umatilla County Surveyors
 Date 12-81
 Dec'd By BLS
 No. S-156-C

REGISTERED PROFESSIONAL LAND SURVEYOR
David H. Klein
 GREGG
 DAVID H. KRUMBEIN

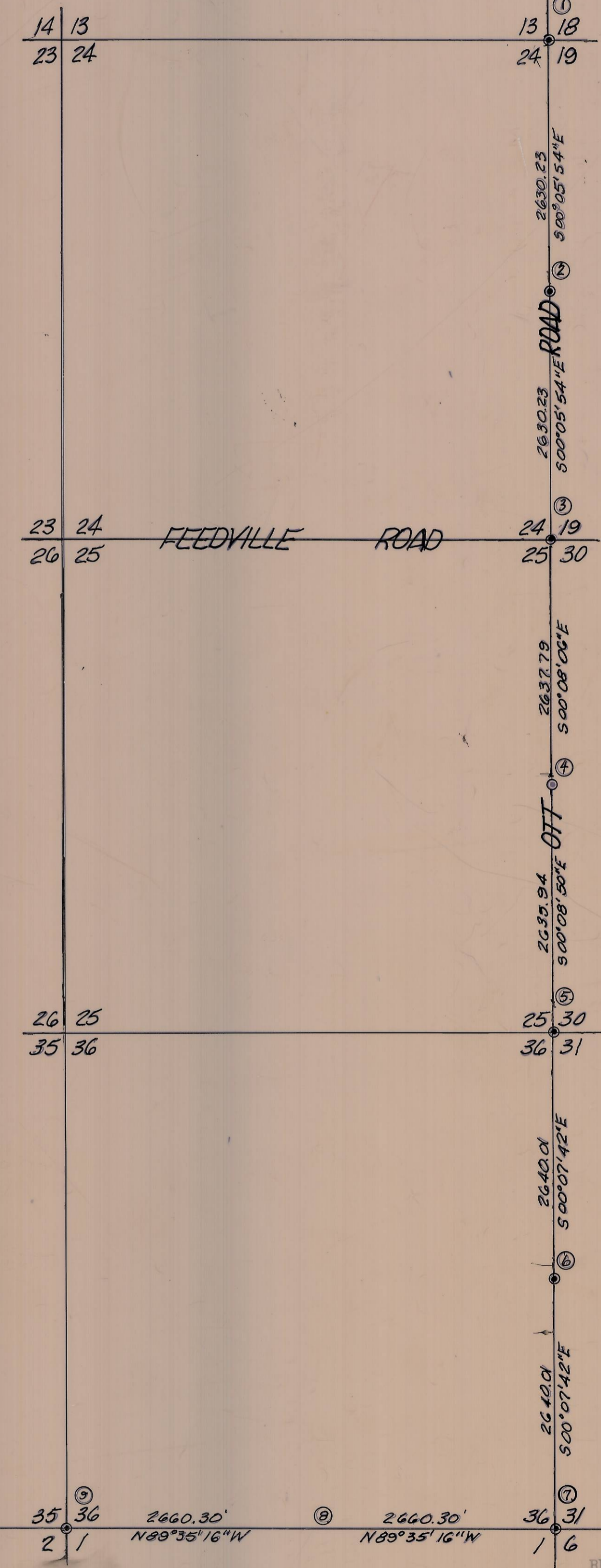
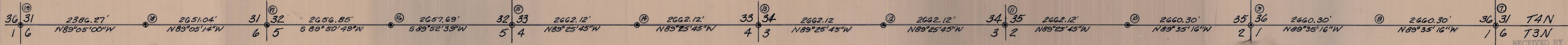
KRUMBEIN ENGINEERING CO.
 ENGINEERS - SURVEYORS - PLANNERS
 221 S. Main, Pendleton, Oregon
 7-18-80

Hermiston Remonumentation
UMATILLA COUNTY SURVEYOR
 T4N, R28E, W4M
 80-22-17

continued Sheet 2

- ③ 4/3 Found a 1/2" sq. pin inside of a 1" i. pipe and a 1/2" i. pin 12.05', S 00° 27' 25" W from pin in pipe. County records show: Staebler found i. pipe in 1974, county no. I-154-A and Wallulis found i. pipe in 1962, county no. G-620-Ax, but in another survey, Wallulis notes on i. pin in 1963, county no. G-566-Ax. Removed both pins and pipe and replaced with Brass Cap.
- ④ 3/10 Found Brass Cap 1.15 feet directly under a carriage bolt. County records show: Fraley found a stone in 1950, county no. G-565-Ax; Harris found B.C. in 1970, county no. G-567-Ax; and Telek notes a 3/8" i. rod. Removed carriage bolt and set Brass Cap over found B.C.
- ⑤ 3/10 Found two 3/8" i. pins in monument box. Records show Hayes notes an i. pin in 1944, county no. G-615-B.
- ⑥ 2/11 Found a 3/4" x 24" i. pipe under a 3/4" x 18" i. pin. Records show Nelson found a wood stake and replaced it with a 3/4" i. pipe in 1948, county no. G-635-A. Removed pin and pipe and set Brass Cap.
- ⑦ 2/11 Found a 2" x 38" i. pipe under a 3/8" x 23" i. pin. Records show: Fraley notes a 1 1/2" i. pipe, county nos. G-633-Ax and G-625-Ax; and Edwards notes an i. rod in 1977, county no. N-88-A. Removed pin and pipe and set Brass Cap.
- ⑧ 1/12 Set Brass Cap in place of 2" i. pipe (outside dia.) and 4.8 feet long with a 3/8" i. pin in bottom. A stone was recorded as the corner in 1949 and a pipe was found about 1960.
- ⑨ E4 Sec. 12 Set Brass Cap at mid point between the S.E. corner of Sec. 12 and the N.E. corner of Sec. 12. No evidence of G.L.O. corner was found.
- ⑩ 11/12 Found a 3/8" i. pin, N 85° 35' 00" E, 5.85 feet from a 1 1/2" i. pipe. Removed pin and pipe and set Brass Cap.
- ⑪ 10/11 Found Brass Cap. Records show: Hayes found a O.S.H.D. monument in 1944, county no. G-615-B and Nelson found a concrete monument with a Brass Cap in 1948, county no. G-635-A.
- ⑫ 9/10 Found a 3/8" i. rod, 2.5 feet below surface and directly under a 3/4" i. pipe. Records show: Hayes notes an i. pin in 1944, county no. G-615-B and Thompson notes a 3/4" i. pipe in 1971, county no. H-59-Ax. Removed pipe and set Brass Cap over the i. rod.
- ⑬ 8/17 Found a 1" x 18" sq. i. rod and a 3/8" i. pin 24" below surface. Records show Langen set i. pin in 1950, county no. G-667-A. Removed i. rod and set Brass Cap over the 3/8" i. pin.
- ⑭ 9/16 Found a 3/8" i. pin. Records show Langen set i. pin in 1950, county no. G-667-A. Removed pin and set Brass Cap.
- ⑮ 9/16 Found a 1 1/2" i. pipe. Records show: Hayes notes an i. pin in 1944, county no. G-615-B and Langen notes an i. pipe in 1950, county no. G-667-A. Removed pipe and set Brass Cap.
- ⑯ 10/13 Found a 3" i. pipe (inside dia.) set in concrete, 1.8 feet below surface and 0.21 feet West of a 3/8" i. pin. Records show: Hayes set monument in 1944, county no. G-615-B and Wallulis set an i. pin in 1962, county no. G-620-Ax. Removed the i. pin and set Brass Cap over the pipe.
- ⑰ 10/11 Found a 3/8" i. pin set inside a 2 1/2" i. pipe (inside dia.). Records show: Hayes notes a i. pin in 1944, county no. G-615-B; Wallulis notes i. pipe in 1962, county no. G-620-Ax; and Staebler notes a pin inside a pipe in 1976, county no. H-33-B. Removed the pin and pipe and set Brass Cap.
- ⑱ 11/14 Found a 2" i. pipe (inside dia.) with a pin in the center, S 88° 31' 15" E and 5.87 feet from a 3/8" i. pin. Records show: Shea notes a 3/8" i. pin in 1974, county no. I-79-A; Edwards notes a 2" i. pipe in 1975, county no. J-7-Ax; Plant's notes pipe with pin in 1976, county no. L-54-B; Wells notes 3/8" i. pin in 1979, county no. G-924-B. Removed the pipe with pin and set Brass Cap in place of the 3/8" i. pin.
- ⑲ 11/12 Found a 1 1/2" i. pipe 6" below surface and S 87° 54' 45" W, 18.18 feet from a 3/4" i. pipe inside of a 2 1/2" i. pipe set over a stone 2 feet below surface. Records show: Shea notes a 3/4" i. pipe in 1972, county no. H-82-Ax; Shea notes a 1 1/2" i. pipe in 1975, county no. J-142-Ax; and Telek notes a 3/4" i. pin in 1976, county no. I-79-B. Removed everything but stone and set Brass Cap over it.
- ⑳ 12/13 Found a Brass Cap Witness Corner lying loose on the ground and a P.H. nail in roadway. Records show Edwards notes a 1 1/2" i. rod in 1979, county no. G-1180-A. Removed P.H. nail and set Brass Cap.
- ㉑ 12/13 Set a Brass Cap in location based on P.H. tie to corner. Found P.H. spike set by Staebler for approximate location in 1969, county no. F-30-A.
- ㉒ E4 Sec. 8 Set Brass Cap at mid point between section corners. Found 1" i. pipe (inside dia.) 4 feet long, S 85° 28' 46" W and 11.44 from set B.C. No record of pipe found in county records.
- ㉓ 15/14 Found a 3/8" i. pin inside of a 2" x 22" i. pipe. Records show: Thompson notes a 3/8" i. p. in 1967, county no. D-22-Ax and Shea notes a 1 1/2" pipe with pin in 1975, county no. J-142-Ax. Removed the pipe and pin and set Brass Cap.
- ㉔ 16/15 Found a 3/8" i. pin. Records show: Wallulis notes a 3/4" i. pin in 1964, county no. A-12-Ax; Harris notes an i. p. in 1963, county no. A-23-Ax; and Thompson notes a 3/8" i. pin in 1967, county no. D-22-Ax. Removed pin and set Brass Cap.
- ㉕ 16/21 Found a P.H. spike set over a 1 1/2" i. pipe (inside dia.) and 2' 10" long. Thompson notes a 2" i. p. in 1963, county no. G-674-Ax. Removed P.H. spike and pipe and set Brass Cap.
- ㉖ 16/21 Found a P.H. spike set in an old cast iron monument box. Records show: Harris notes a P.H. spike in 1963, county no. G-668-B and Edwards notes a P.H. spike in man box in 1978, county no. F-23-Ax. Removed P.H. spike and man. box and set Brass Cap.
- ㉗ 15/22 Found a P.H. spike. Thompson notes P.H. spike in 1967, county no. D-22-Ax. Removed spike and set B.C.
- ㉘ 14/23 Found a Brass Cap. Shea notes B.C. in 1973, county no. I-82-A. Did not remove this cap.

- ① 13/18 Found 1 1/4" iron pipe (inside dia) 2 feet long and 14" deep. Check with survey by Higgins of 1954. Set Brass Cap in place of pipe, 6" under surface of road. A Brass Cap was found N 34° 41' 10" E, 22.88 feet, set by Wayne Harris Co. in 1973, county no. H-217-C.
- ② E4 Sec. 24 Set Brass Cap mid point between sections. Used the 1 1/4" i. pipe for the N.E. corner and 1/2" i. rod for the S.E. corner.
- ③ 24/19 Found 1/2" i. rod, 1.5 feet deep, set by Higgins in 1954, county no. G-695-Ax and found B.C. set by Harris in 1973, county no. I-21-C, by proportionate method. Based on information, the 1/2" i. rod was used as corner and a Brass Cap was set in place of rod.
- ④ E4 Sec. 25 Found 1/2" i. rod about 1" deep under road, set by Higgins in 1954, county no. G-695-Ax. Set Brass Cap in place of rod.
- ⑤ 25/30 Found 2" i. pipe (inside dia). Records go back as far as 1954. The pipe checks with Railroad records. Brass Cap was set in place of pipe.
- ⑥ E4 Sec. 36 Set Brass Cap at mid point between a 2" i. pipe and a B.C. in concrete. No evidence of old corner was found.
- ⑦ 30/31 Found Brass Cap in concrete, set by Staebler in 1972, county no. H-107-B.
- ⑧ E4 Sec. 36 Set Witness Corners, N 67° 38' 15" W, 15.04 feet and N 41° 06' 21" E, 7.00 feet from computed corner. Corner was not set.
- ⑨ 35/36 Set Witness Corners, North 25 feet and South 25 feet from computed corner. Corner was not set.
- ⑩ E4 Sec. 35 Found 2" iron pipe (inside dia). Set Brass Cap in place of pipe. County records show corner found as late as 1972.
- ⑪ 34/35 Set Brass Cap by single proportionate method, using 3/8" sq. rod for S.E. corner of Sec. 33 and 2" i. pipe for 3/4 of Sec. 35.
- ⑫ E4 Sec. 34 Set Brass Cap by single proportionate method, using 3/8" sq. rod for S.E. corner of Sec. 33 and 2" i. pipe for 3/4 of Sec. 35.
- ⑬ 33/34 Set Brass Cap by single proportionate method, using 3/8" sq. rod for S.E. corner of Sec. 33 and 2" i. pipe for 3/4 of Sec. 35.
- ⑭ E4 Sec. 33 Set Brass Cap by single proportionate method, using 3/8" sq. rod for S.E. corner of Sec. 33 and 2" i. pipe for 3/4 of Sec. 35.
- ⑮ 32/33 Found 3/8" sq. rod for corner, which was set by Olier in 1949, in place of wood stake, see county no. G-503-B. Set Brass Cap in place of rod.
- ⑯ E4 Sec. 32 Found Brass Cap for corner set by Harris in 1968, county no. E-6-A.
- ⑰ 31/32 Found stone with X on it. Records show corner was found back as late as 1949 by Olier, county no. G-503-B. Set Brass Cap in place of stone and placed stone along side of B.C.
- ⑱ E4 Sec. 31 Found 3/8" i. pin set by Edwards in 1978, county no. P-47-A. Set Brass Cap in place of pin. Also found pipe with Brass washer on top, stamped 3/4 31, 1967, set by Thompson, N 89° 05' 00" W, 10.14 feet from pin.
- ⑲ 36/31 Found Brass Cap and Witness Corner, S 89° 05' 00" E, 18.48 feet from stone with X on it. Stone is 18x16x10, on G.L.O. notes it shows it since 1941. Set Brass Cap in place of stone and placed the stone along side of B.C.



• denotes Brass Cap

Revised January 14, 1982, M1

David H. Klein

RECEIVED BY
Umatilla County Surveyor
Date 12-81
Recorded by BLS
No. S-156-C

KRUMBEIN ENGINEERING CO
ENGINEERS - SURVEYORS - PLANNERS
221 S. Main, Pendleton, Oregon

Hermiston Re-monumentation
UMATILLA COUNTY SURVEYOR
T4N, R28E, W1M.

SCALE 1" = 100'
DATE 7-18-80
DRAWN BY M.L.J.
CHKD BY T.E.H.
80-22-D