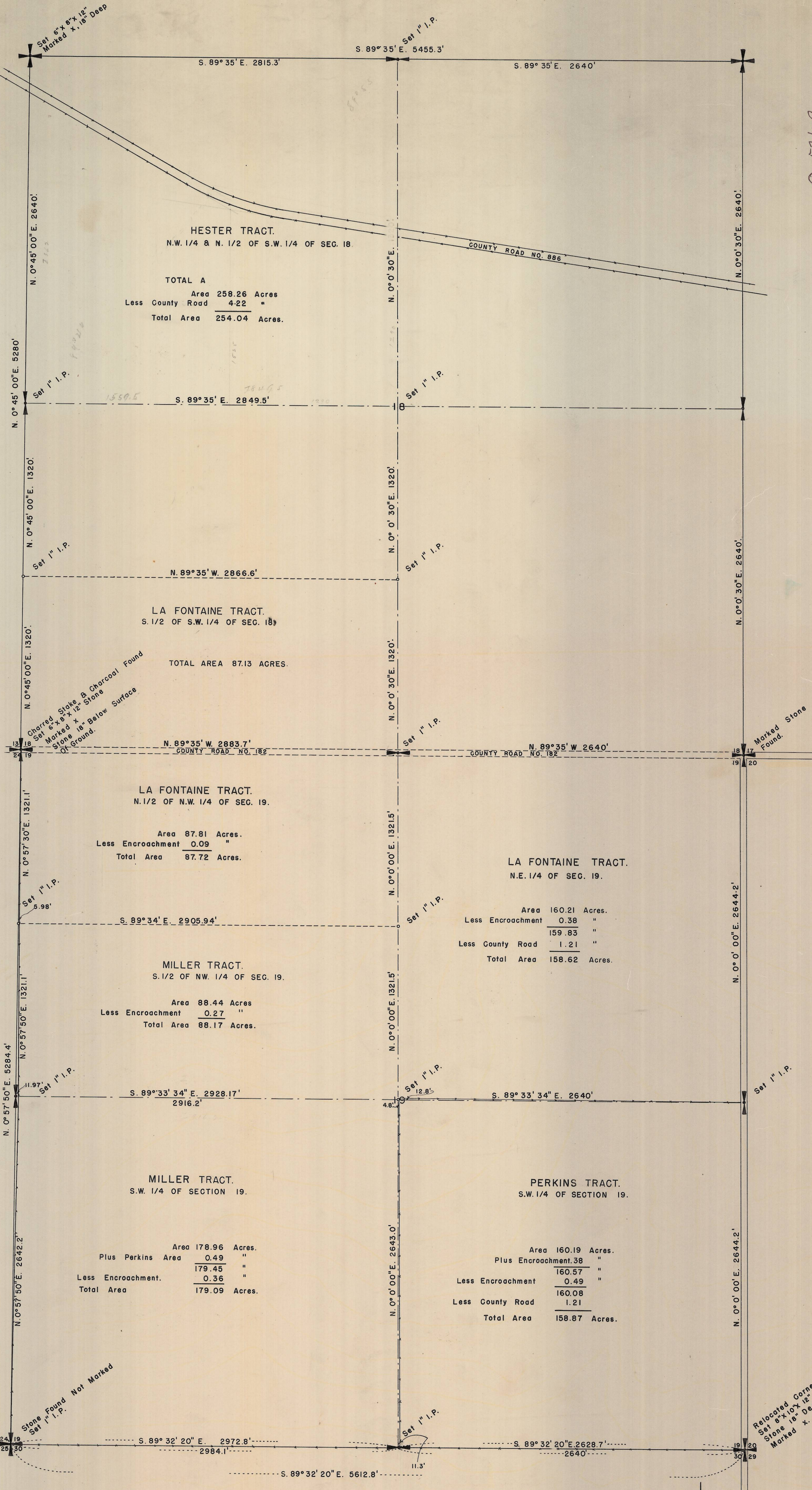


Q-521-C



SURVEY
OF
SECTION 19 & SECTION 18
T. 3, N., R. 32 E.W.M.

FOR
GEORGE LA FONTAINE & CHARLES HESTER.
PENDLETON, ORE.

I FRANK B. HAYES, HEREBY CERTIFY AND AFFIRM THAT THE ABOVE PLAT IS MADE FROM NOTES TAKEN BY ME WHILE MAKING A TRANSIT AND TAPE SURVEY AND THAT IT IS CORRECT IN EVERY DETAIL TO THE BEST OF MY KNOWLEDGE AND BELIEF.

Frank B. Hayes
County Surveyor.

Scale 1" = 100'

