

WM. C. MCKAY D.L.C. No. 38

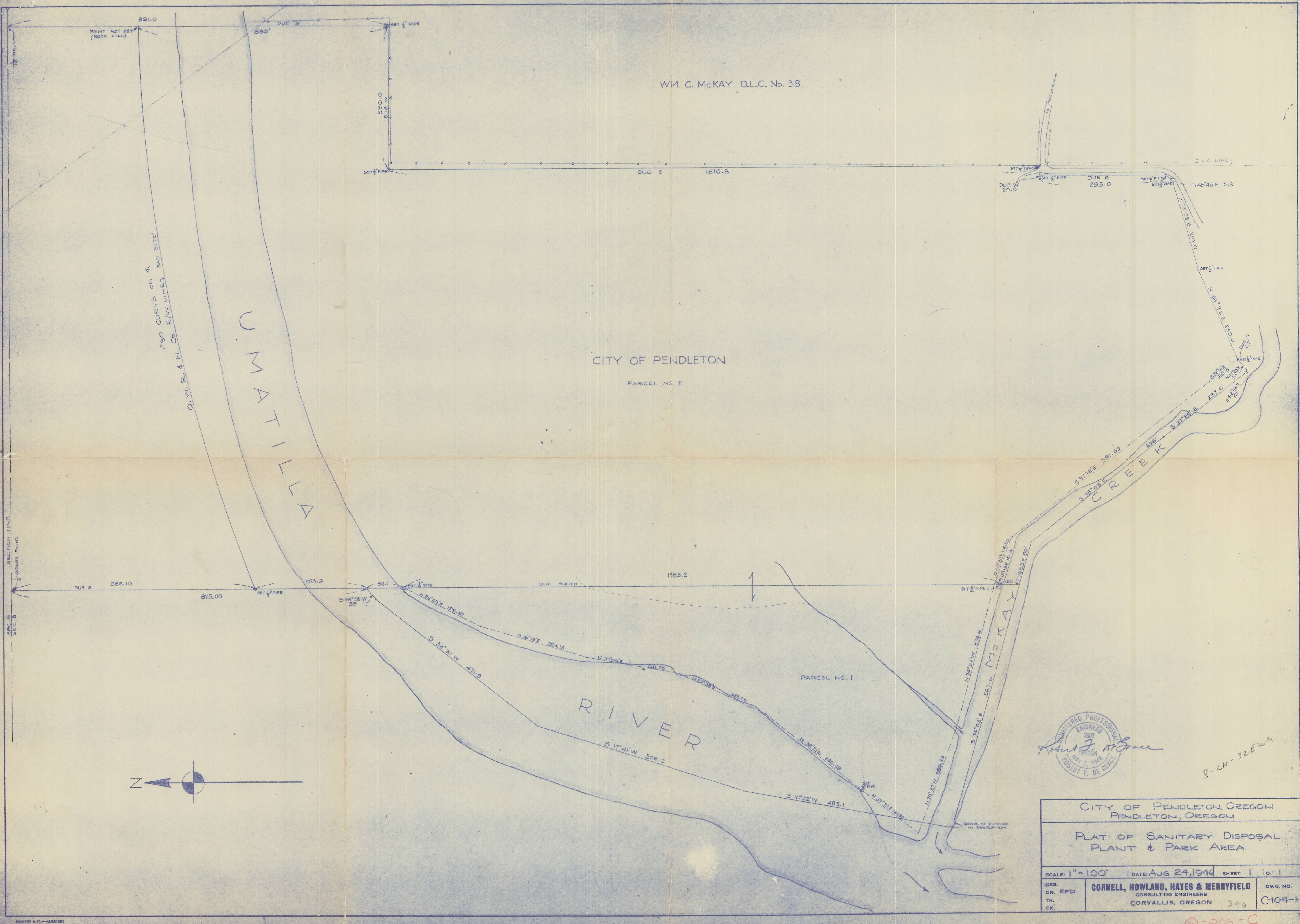
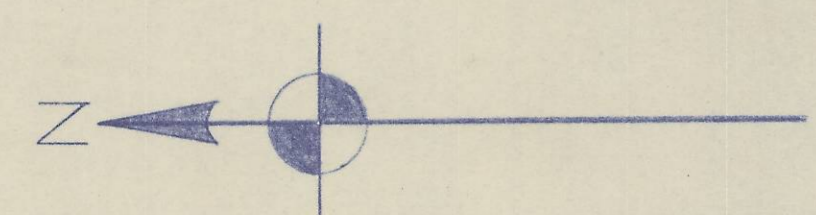
CITY OF PENDLETON
PARCEL NO. 2

UMATILLA
O.V. R. & N. CO. R/W LINE, RAD. STIC
1°30' CURVE ON E

REGISTERED PROFESSIONAL
ENGINEER
2802
ROBERT F. DE GRACE
MAY 7, 1948
OREGON

8-24-32EWA

CITY OF PENDLETON, OREGON PENDLETON, OREGON			
PLAT OF SANITARY DISPOSAL PLANT & PARK AREA			
SCALE: 1" = 100'	DATE: AUG 24, 1948	SHEET 1	OF 1
DES. DR. RFD	CORNELL, HOWLAND, HAYES & MERRYFIELD CONSULTING ENGINEERS CORVALLIS, OREGON		DWG. NO. 340 C-104-T
TR. CK.			



ORIGINAL

Q-206-C

Field Notes of a Survey of Property in Section 8 in Umatilla County at the Request of the City of Pendleton

I begin at the 1/4 corner between Sections 5 and 8, Township 2N, Range 32 E, W.M., a monument reestablished by the County Engineer, and run due south on a meridian determined by observation of Polaris.

513.7 feet center main line of O.W.R. & N. Co. RR.

566.1 ft. southerly right-of-way line of O.W.R. & N. Co. RR. set 1/2" pipe for the N.W. corner of a tract of land which I will describe as Parcel No. 2

Thence due south along west boundary of Parcel No. 2, measuring distances from the N. W. corner of Parcel No. 2

120 ft. N. Bank Umatilla R.

340 ft. S. Bank Umatilla R.

345.0 ft. Set 3/4" pipe, which pipe is 86.1 feet due south of a point in the Umatilla River which point is the northeast corner of a tract which I will describe as Parcel No. 1

Thence continuing south along west boundary of Parcel No. 2, which is collinear with east boundary of Parcel No. 1, and measuring distance from the N. W. boundary of Parcel No. 2

762 ft. Slough runs NE-SW

1187 ft. Slough runs E-W

1728.2 ft. Set 3/4" pipe, which pipe is 48.7 ft. due north of a point in the channel of McKay Creek, which point is common to both Parcel No. 1 and Parcel No. 2, and is on the southerly line of both parcels.

Thence on a random traverse along the N. Bank of McKay Creek and the E. Bank of the Umatilla River,

N 15° 03' E 10.4 ft.

N 74° 53' W 334.4 ft.

N 70° 37' W 269.2 ft.

N 37° 21' E 167.8 ft.

N 38° 21' E 290.3 ft.

N 25° 38' E 223.0 ft.

N 10° 00' E 218.2 ft.

N 16° 15' E 254.2 ft.

N 26° 49' E 196.7 ft.

south of the northeast corner of Parcel No. 1 to the 3/4" pipe previously set 86.1 ft.

Also beginning at the 3/4" pipe set 1728.2 feet due south of the N.W. corner Parcel No. 2, which pipe is 48.7 feet north of the south boundary of Parcel No. 2, and along a random traverse along the north bank of McKay Creek,

N 15° 03' E	10.4 ft.
S 69° 30' E	116.5 ft.
S 37° 18' E	581.6 ft.
S 38° 16' E	85.6 ft.

Due west 2.7 ft. to an angle point on the boundary of Parcel No. 2, where I set a 1/2" pipe.

Thence along the south and east boundary of Parcel No. 2,
 N 66° 32' E 230.0 ft, set 1/2" pipe
 N 73° 55' E 210.0 ft., set 3/4" pipe, which I call corner
 No. 8 of Parcel No. 2
 N 45° 43; E 20.0 ft. and 30.0 ft, set two temporary points
 to later intersect.

Also beginning at the 1/16 corner between Sections 5 and 8 which is 1320.0 feet on true line S 89° 27' from the section corner 4-5-8-9 in T 2 N R 32 E, W.M. as reestablished by the County Engineer

Thence due south 891.0 feet to the interior corner of William C. McKay D.L.C. No. 38, where I set a 1/2" pipe;

Thence due west 330.0 feet to the N.W. corner of the southern portion of said D.L.C., where I set a 1/2" pipe;

Thence due south along the westerly line of said D.L.C. 1506.0 feet, set temporary corner; thence due west 20.0 feet, set temporary corner, thence due south 290 feet, set two temporary points to intersect.

Then beginning again at the aforementioned corner No. 8 of Parcel No. 2, I run

N 45° 43' 19.9 feet to the intersection of this line with a north-south line 20.0 feet west of the west boundary of the said D.L.C. where I set a 1/2" pipe;

Thence due north 293.0 feet, where I set a 3/4" pipe

Thence due east 20.0 feet, where I set a 1/2" pipe, which pipe is 1510.8 feet south of the previously set N.W. corner of the southern portion of said D.L.C., and which closes the survey of the eastern boundary of Parcel No. 2

The whole of both parcels being entirely in Section 8, T 2 N., R 32 E, W.M. and surveyed according to description furnished me by the City of Pendleton.

Robert J. De Grace