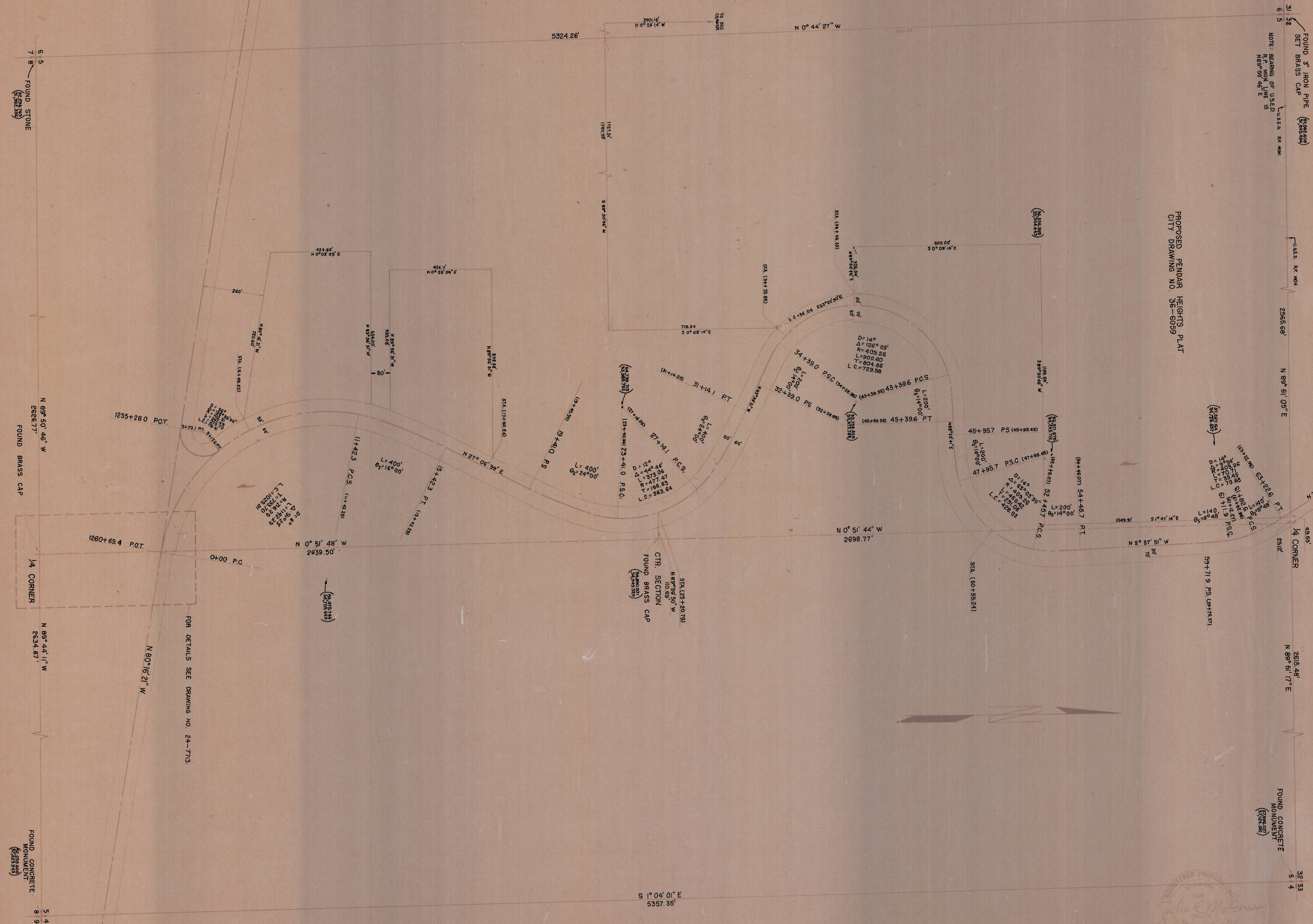


PROPOSED PENDLAR HEIGHTS PLAT
CITY DRAWING NO. 36-6059



NOTE: ALL INFORMATION SHOWN IS BASED ON THE PENDLETON LOCAL GRID.
() DENOTES TRUE STATIONING
SEE CITY DRAWING NO. 11-7711 FOR SURVEY OF SECTION 6.

24-1339
L-28-0

CITY OF PENDLETON
ENGINEERING DEPT.

AIRPORT ROAD



DATE: MAR. 7, 1975	SCALE: 1" = 200'	SHEET 1 OF 1
DN_28-	CKD. GLO	DWG. NO.