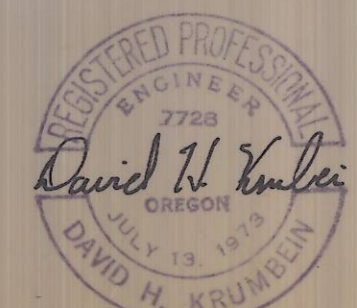
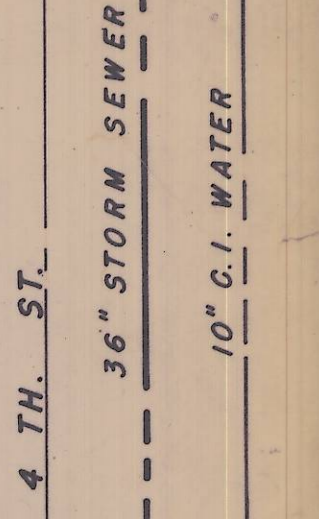
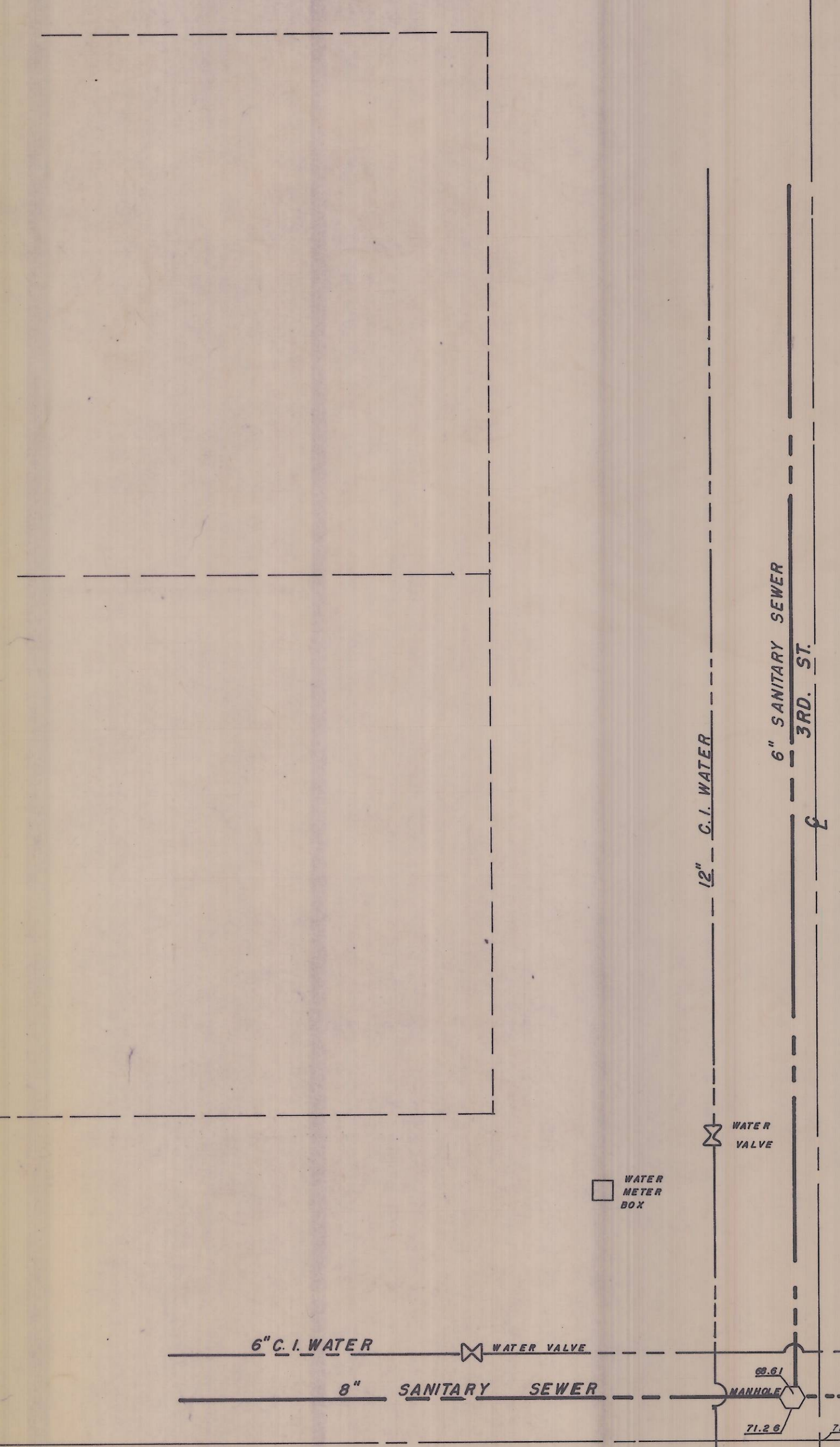
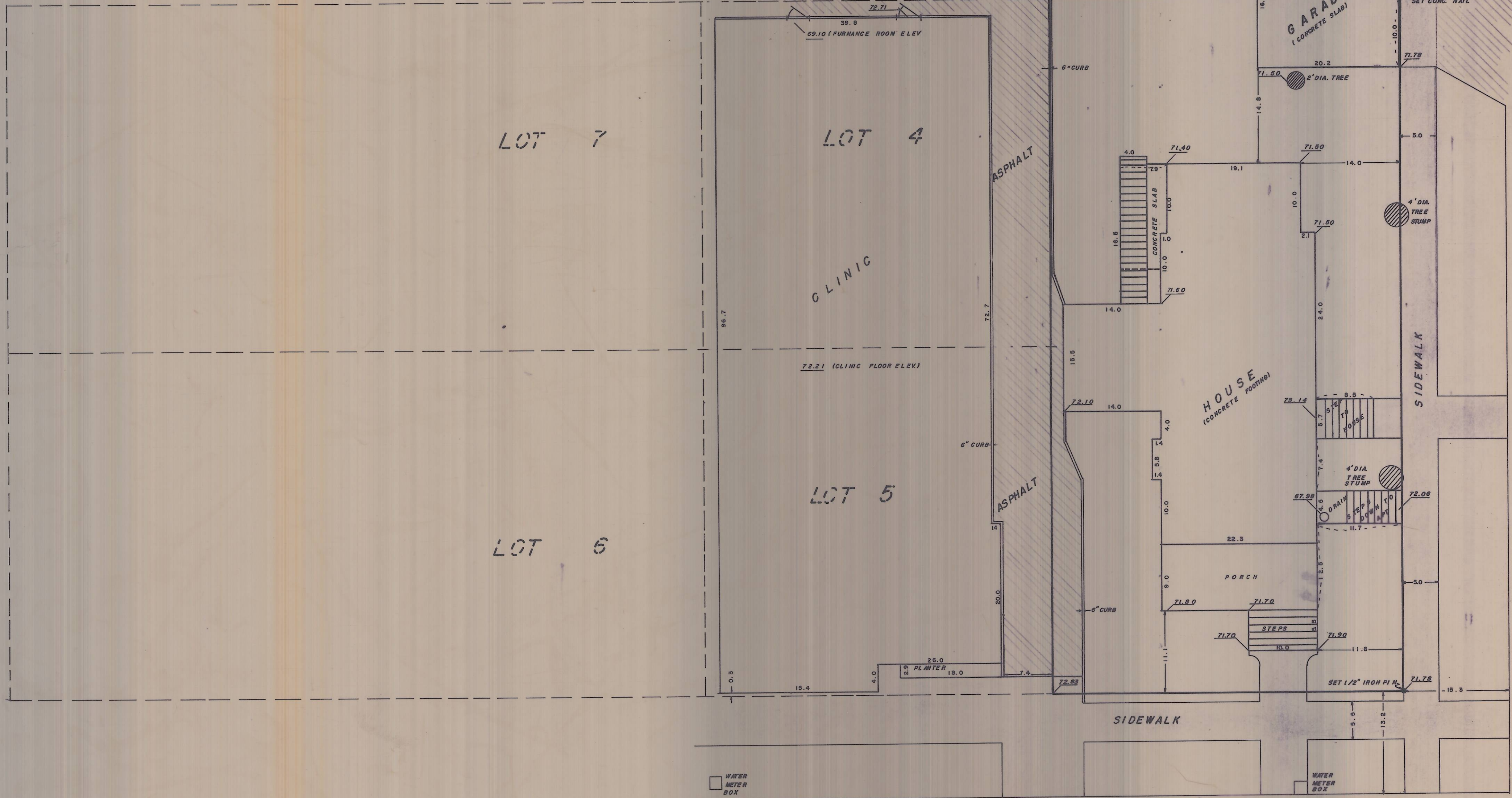
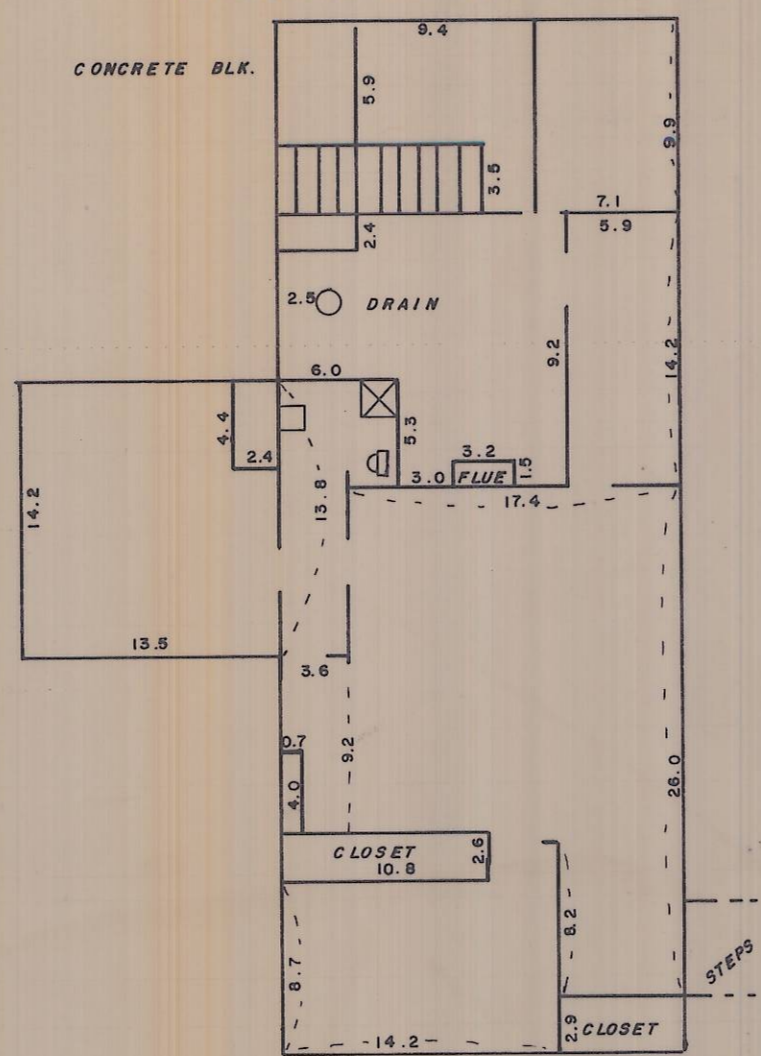


BASEMENT APARTMENT TO HOUSE



ELEVATIONS - PER PENDLETON DATUM

SURVEY FOR DR. FEVES		WAYNE HARRIS CO. INC.	
REVISED DRAWING		ENGINEERS SURVEYORS PENDLETON OREGON	
EAST HALF LOTS 4 & 5, BLK. 21		SCALE	1" = 10'
DATE	7-11-74	DRN. BY	D.E.S.
ORIGINAL TOWN OF PENDLETON, OREGON		CKD. BY	DJK
		DRNG. NO.	74-415C