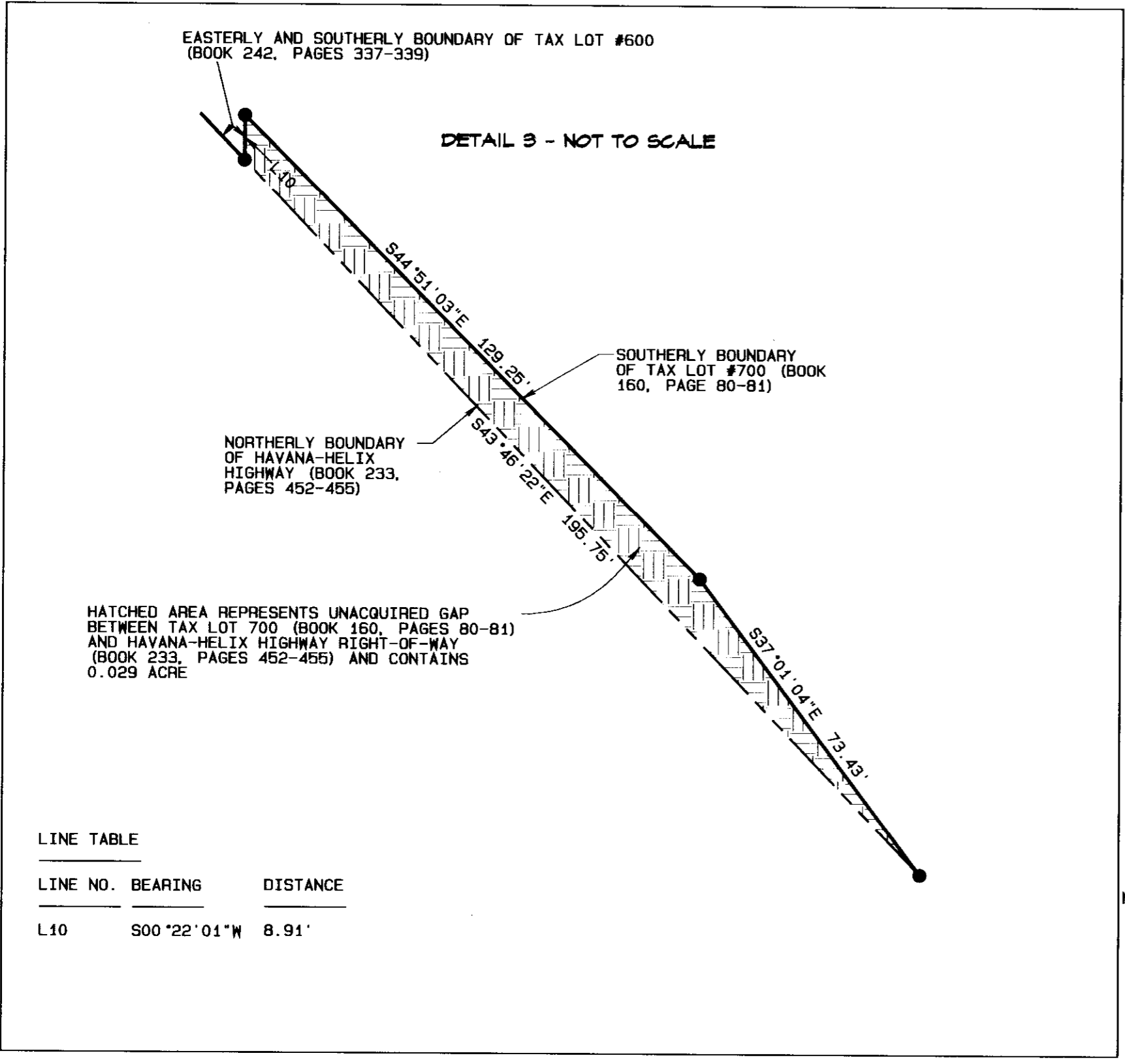


MONUMENT DESCRIPTIONS

- M5004 - FOUND REBAR WITH 1-1/2" ALUMINUM CAP AT STATION 7+15.14, 59.89' RT. (STATION 7+15.60, 00' RT., R-5)
- M5006 - FOUND HUB AND TACK AT STATION 7+80.23, 60.96' RT. (REBAR WITH ALUMINUM CAP, STATION 7+80, 61.04' RT., R-5)
- M1000 - FOUND REBAR WITH 1-1/2" ALUMINUM CAP AT STATION 7+80.13, 39.87' RT. (STATION 7+80, 40.00' RT., R-5)
- M5010 - FOUND REBAR WITH 1-1/2" ALUMINUM CAP AT STATION 8+82.36, 61.15' RT.
- M5014 - FOUND REBAR WITH 1-1/2" ALUMINUM CAP AT STATION 9+95.49, 61.45' RT.
- M5007 - FOUND HUB AND TACK AT STATION 10+39.36, 59.94' RT. (REBAR WITH ALUMINUM CAP, STATION 10+39.22, 60.00' RT., R-5)
- M5009 - FOUND REBAR WITH 1-1/2" ALUMINUM CAP AT STATION 10+88.52, 59.94' RT.
- M502 - FOUND IRON BOLT WITH 1" SQUARE HEAD AT EQUATION STATION 16+00.53 P. T. BK. = 13+11.50 P.O.T. AH., 39.96' RT.
- M503 - FOUND IRON BOLT WITH 1" SQUARE HEAD AT EQUATION STATION 16+00.53 P. T. BK. = 13+11.50 P.O.T. AH., 39.96' LT.
- M501 - FOUND IRON BOLT WITH 1" SQUARE HEAD AT STATION 14+54.97 P. C., 39.95' RT.
- M500 - FOUND IRON BOLT WITH 1" SQUARE HEAD AT STATION 14+54.97 P. C., 39.95' LT.

(CONTINUED BELOW)



LINE TABLE

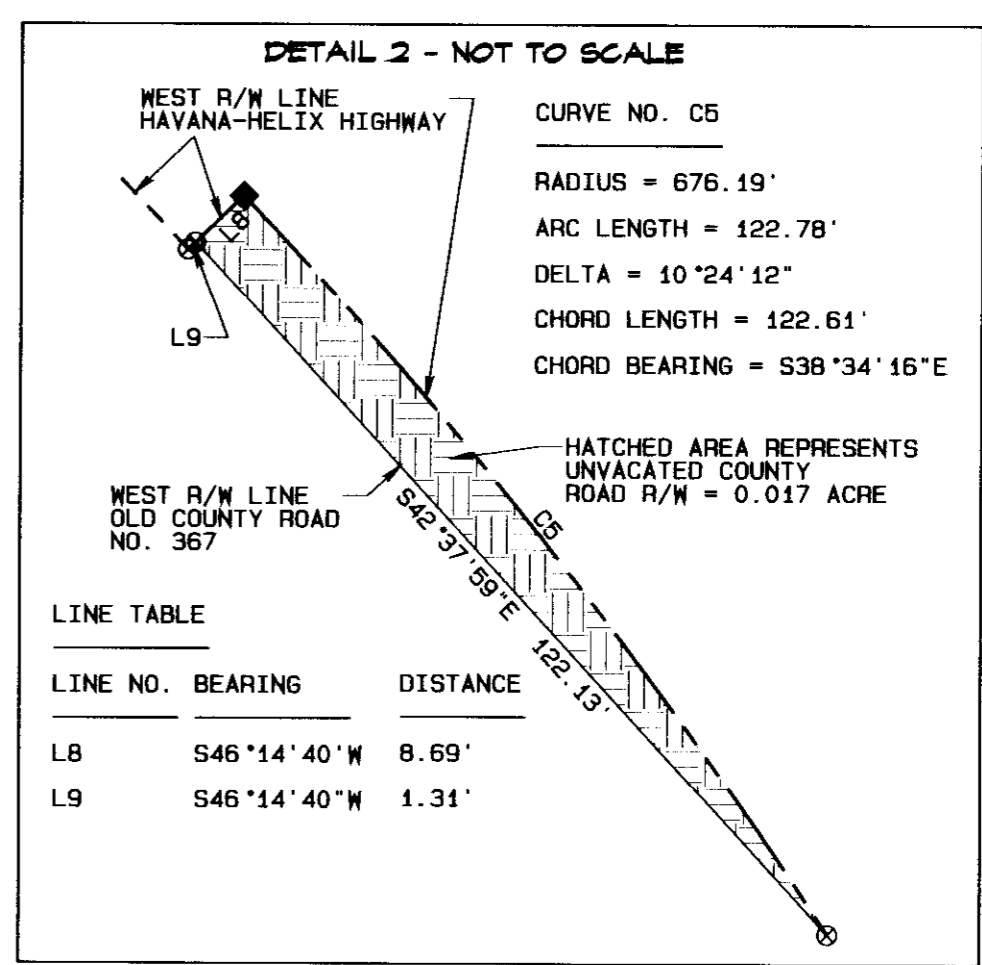
LINE NO.	BEARING	DISTANCE
L10	S00°22'01"W	8.91'

NOTE: CENTER LINES OF HAVANA-HELIX HIGHWAY AND RAILROAD INTERSECT AT STATIONS 12+46.45 AND 382+32.14 RESPECTIVELY. (12+46.47, R-3)

NOTE: HIGHWAY RIGHT-OF-WAY INTERSECTS RAILROAD RIGHT-OF-WAY AT RAILROAD STATION 381+27.11, 50.00' LT. AND HIGHWAY STATION 13+13.35, 99.51' RT.

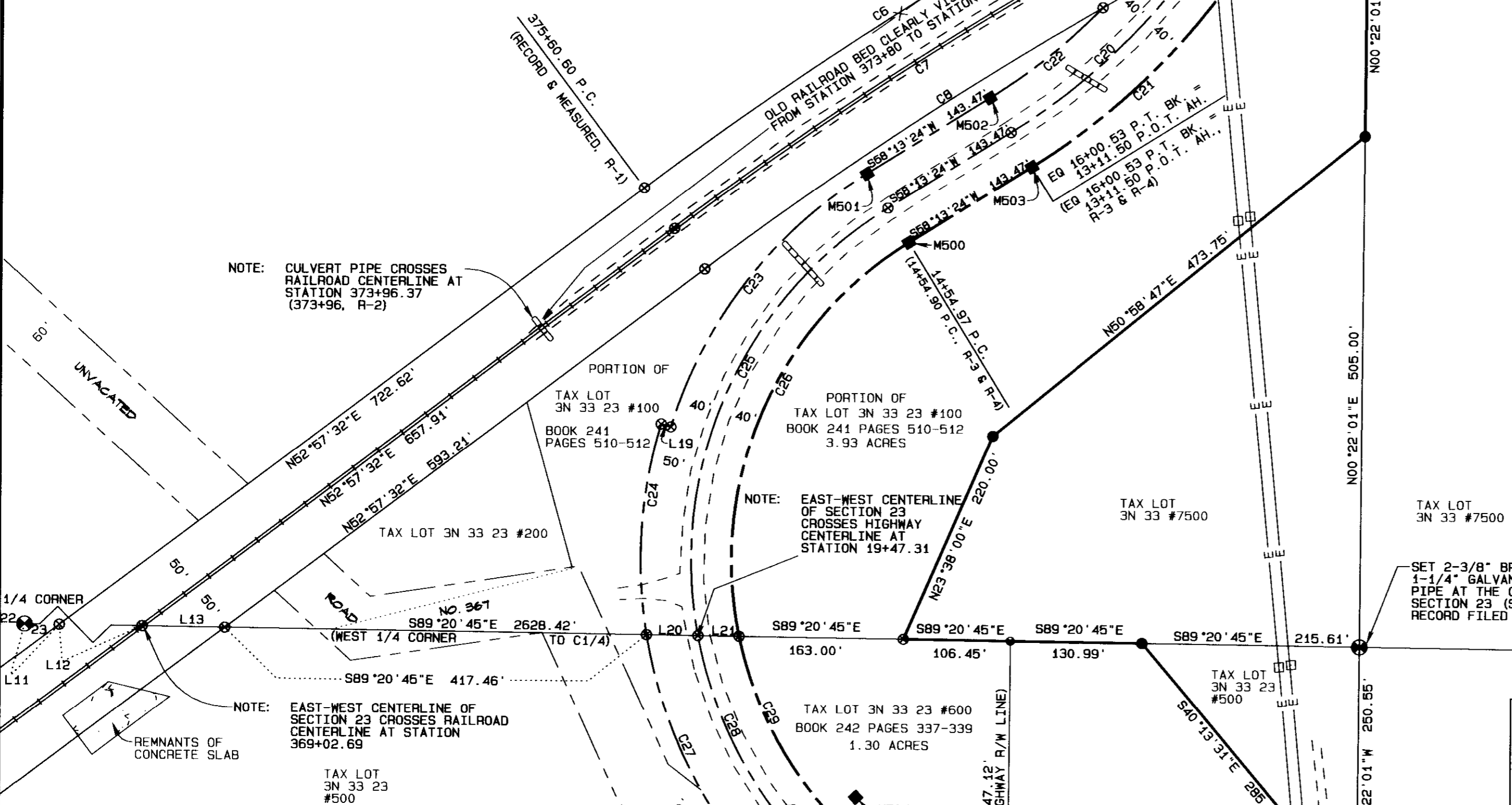
SEE SHEET 2 FOR NARRATIVE, DEED INFORMATION, AND HIGHWAY ALIGNMENT INFORMATION

RECEIVED BY
Umatilla County Surveyor
Date: 5/8/2012
Rec'd By: S. Oles
No.: 12-063-C



LINE TABLE

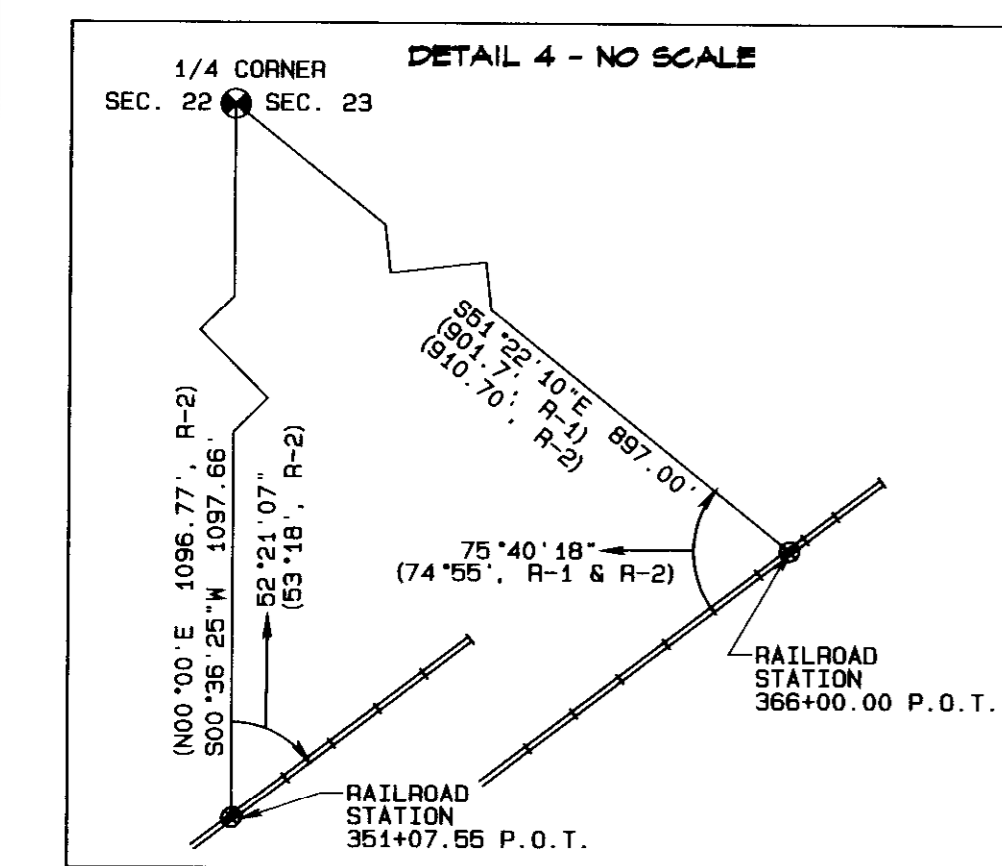
LINE NO.	BEARING	DISTANCE
L8	S46°14'40"W	8.69'
L9	S46°14'40"W	1.31'



NOTE: CULVERT PIPE CROSSES RAILROAD CENTERLINE AT STATION 373+96.37 (373+96, R-2)

NOTE: EAST-WEST CENTERLINE OF SECTION 23 CROSSES RAILROAD CENTERLINE AT STATION 19+47.31

NOTE: SET 2-3/8" BRASS CAP ON 1-1/4" GALVANIZED IRON PIPE AT THE CENTER OF SECTION 23 (SEE CORNER RECORD FILED SEPARATELY)



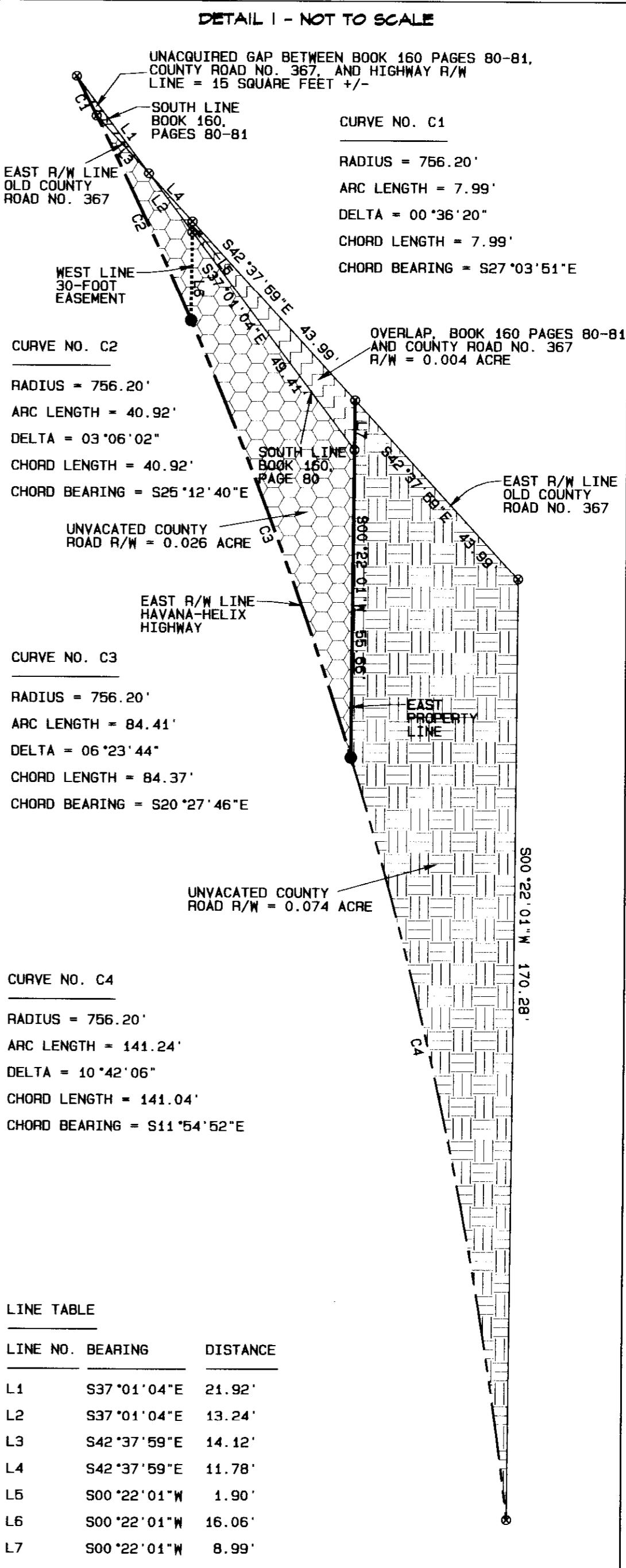
MONUMENT DESCRIPTIONS (CONTINUED)

- M504 - FOUND IRON BOLT WITH 1" SQUARE HEAD AT STATION 21+83.81 P. O. T. 70.07' LT. IT IS NOT KNOWN IF THIS WAS INTENDED TO BE A REFERENCE MONUMENT TO THE P. T. AND WAS NOT HELD AS SUCH.
- M505 - FOUND IRON BOLT WITH 1" SQUARE HEAD AT STATION 21+83.85 P. O. T. 55.20' RT. IT IS NOT KNOWN IF THIS WAS INTENDED TO BE A REFERENCE MONUMENT TO THE P. T. AND WAS NOT HELD AS SUCH.
- M506 - FOUND IRON BOLT WITH 1" SQUARE HEAD AT STATION 24+24.82 P. O. T. 40.52' LT. IT LIES 7.10' WEST OF THE WEST LINE OF TAX LOT #700 AND ITS PURPOSE IS UNKNOWN.
- M508 - FOUND IRON BOLT WITH 1" SQUARE HEAD AT STATION 26+75.07 P. C., 39.95' LT.
- M509 - FOUND IRON BOLT WITH 1" SQUARE HEAD AT STATION 26+75.07 P. C., 39.95' RT.

- SURVEY RECORDS
- R-1 O. W. R. R. & N. CO. PENDLETON TO WALLA WALLA RIGHT-OF-WAY MAP, DATED 1900
 - R-2 SURVEY NO. 07-58-A BY FISHER, DATED OCTOBER, 1942
 - R-3 O. S. H. D. AS-CONSTRUCTED MAP OF THE HAVANA SECTION OF THE HAVANA-HELIX SECONDARY HIGHWAY, DATED AUGUST, 1956 (MAP NO. 67-16-6)
 - R-4 O. S. H. D. RIGHT-OF-WAY MAP OF THE HAVANA SECTION OF THE HAVANA-HELIX HIGHWAY, DATED JUNE, 1955 (MAP NO. 7B 33-14)
 - R-5 RIGHT-OF-WAY SURVEY BY PLS 2765 (O. D. O. T.) DATED NOVEMBER, 2008 (SURVEY NO. 09-42-B)
 - R-6 BOUNDARY SURVEY FOR JESSE PUGH BY PLS 1106 (SURVEY NO. 88-17-B)
 - R-7 PLAT AND FIELD NOTES OF COUNTY ROAD NO. 367 BY JOHN ARNOLD, COUNTY SURVEYOR, BOOK "B", PAGES 171-174, DATED 1891

CURVE TABLE

CURVE NO.	RADIUS	ARC LENGTH	DELTA	CHORD BEARING	CHORD DISTANCE
C6	3869.72'	573.93'	08°29'52"	N57°12'28"E	573.40'
C7	3819.72'	671.54'	10°04'23"	N57°59'44"E	670.67'
C8	3769.72'	472.99'	07°11'20"	N56°33'12"E	472.67'
C9	3769.72'	109.64'	01°39'59"	N60°58'51"E	109.63'
C10	3769.72'	78.79'	01°11'51"	N62°24'46"E	78.78'
C11	3869.72'	165.17'	02°26'44"	N62°40'46"E	165.16'
C12	3869.72'	98.33'	01°27'21"	N64°37'48"E	98.32'
C13	3769.72'	107.59'	01°38'07"	N63°49'45"E	107.59'
C14	3869.72'	478.63'	07°05'12"	N68°54'56"E	478.32'
C15	3819.72'	496.28'	07°26'39"	N68°44'13"E	495.92'
C16	3769.72'	514.00'	07°48'44"	N68°33'10"E	513.59'
C17	636.62'	130.11'	11°42'37"	S13°34'42"W	129.89'
C18	636.62'	76.92'	06°56'22"	S22°53'41"W	76.87'
C19	636.62'	94.99'	08°32'56"	S30°37'51"W	94.90'
C20	636.62'	259.09'	23°19'06"	S46°33'51"W	257.31'
C21	676.62'	345.38'	29°14'46"	S43°36'02"W	341.64'
C22	596.62'	143.89'	13°49'07"	S51°18'51"W	143.54'
C23	449.29'	467.42'	41°18'45"	S37°34'02"W	316.98'
C24	459.29'	211.31'	26°21'40"	S03°43'49"W	209.46'
C25	409.29'	492.35'	68°55'25"	S23°45'41"W	463.19'
C26	369.29'	452.28'	70°10'22"	S23°08'13"W	424.53'
C27	459.29'	275.14'	34°19'22"	S26°36'42"E	271.04'
C28	409.29'	236.25'	33°04'21"	S27°14'12"E	232.98'
C29	369.29'	205.11'	31°49'24"	S27°51'40"E	202.48'
C30	756.19'	216.53'	16°24'21"	S35°34'11"E	215.79'
C31	716.19'	549.79'	43°59'00"	S21°46'52"E	536.39'
C32	676.19'	396.30'	33°34'48"	S16°34'46"E	390.65'
C33	3819.72'	131.70'	01°58'32"	N64°01'11"E	131.69'
C34	3869.72'	0.98'	00°00'52"	N65°21'56"E	0.98'



LINE TABLE

LINE NO.	BEARING	DISTANCE
L1	S37°01'04"E	21.92'
L2	S37°01'04"E	13.24'
L3	S42°37'59"E	14.12'
L4	S42°37'59"E	11.78'
L5	S00°22'01"W	1.90'
L6	S00°22'01"W	16.06'
L7	S00°22'01"W	8.99'

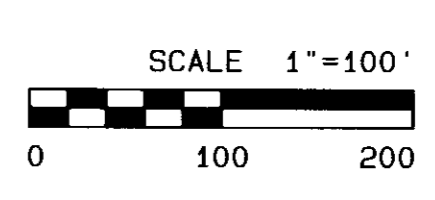
UMATILLA COUNTY ROAD DEPARTMENT
PENDLETON, OREGON 97001
PHONE: 541/278-5434

MAP OF SURVEY FOR HAVANA QUARRY & STOCKPILE SITE

LOCATED IN THE WEST 1/2 OF SECTION 23
TOWNSHIP 3 NORTH, RANGE 33 E. W. M.

SURVEY COMMENCED APRIL, 2012; COMPLETED MAY, 2012

DRAWN BY G. R. R. CHECKED BY M. P. K. SHEET 1 OF 2



REGISTERED PROFESSIONAL LAND SURVEYOR
Gary R. Roberts
OREGON
JULY 20, 1993
2627
RENEWS 12/31/2012

