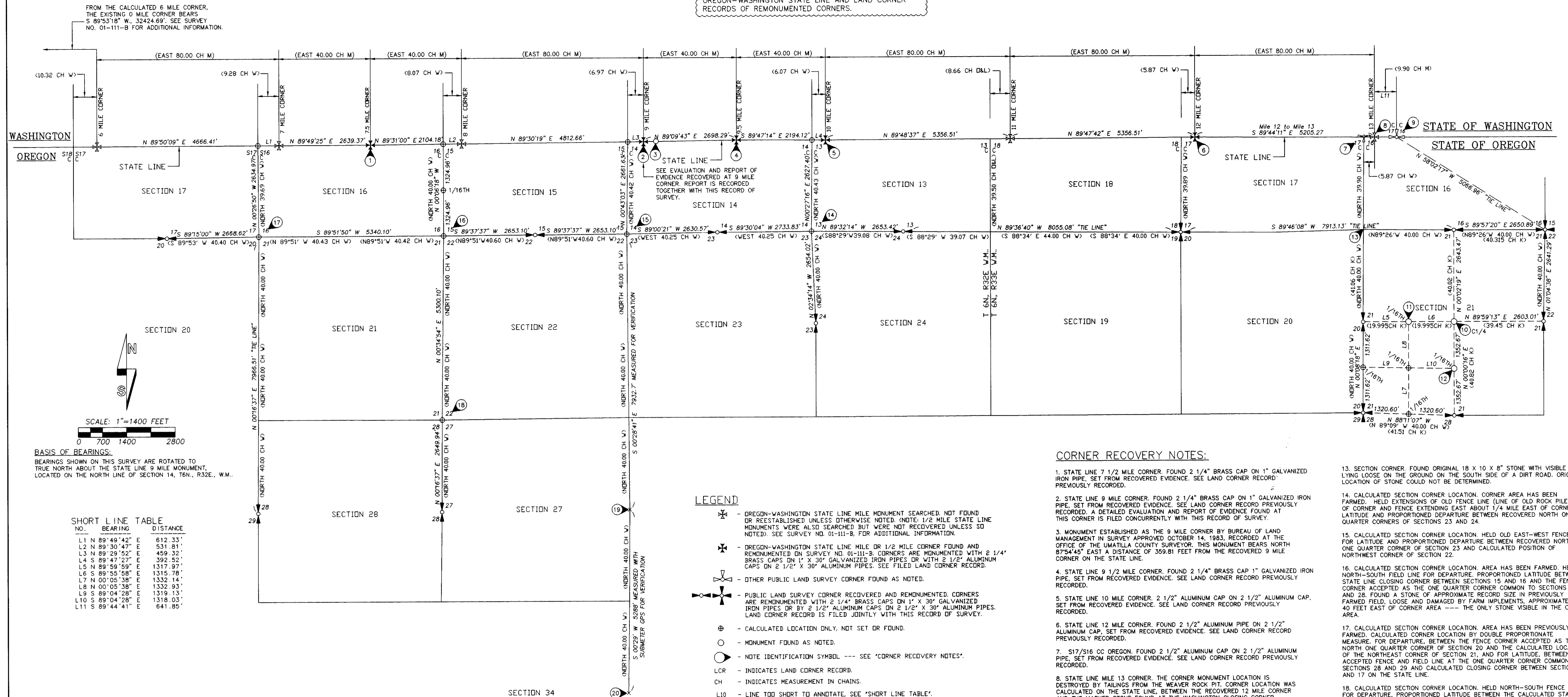


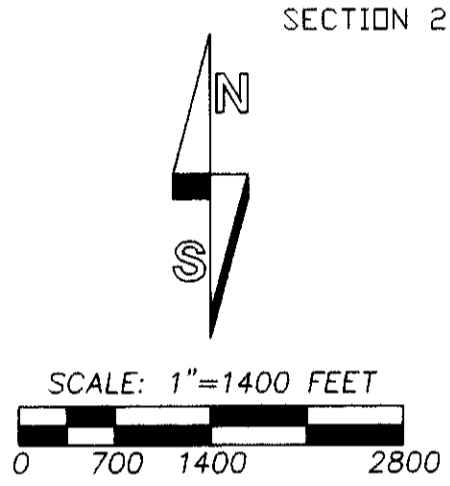
RECORD OF SURVEY

NOTE: SEE UMATILLA COUNTY SURVEY NO. 01-111-B FOR ADDITIONAL MEASUREMENT INFORMATION ON OREGON-WASHINGTON STATE LINE AND LAND CORNER RECORDS OF REMONUMENTED CORNERS.



FROM THE CALCULATED 6 MILE CORNER, THE EXISTING 0 MILE CORNER BEARS S 89°53'18\"/>

SEE EVALUATION AND REPORT OF EVIDENCE RECOVERED AT 9 MILE CORNER. REPORT IS RECORDED TOGETHER WITH THIS RECORD OF SURVEY.



SCALE: 1"=1400 FEET
0 700 1400 2800

BASIS OF BEARINGS:
 BEARINGS SHOWN ON THIS SURVEY ARE ROTATED TO TRUE NORTH ABOUT THE STATE LINE 9 MILE MONUMENT, LOCATED ON THE NORTH LINE OF SECTION 14, T6N., R32E., W.M.

NO.	BEARING	DISTANCE
L1	N 89°49'42\"/>	

NARRATIVE

THE PURPOSE OF THIS SURVEY WAS TO LOCATE CERTAIN SECTION AND SECTION SUBDIVISION LINES SOUTH OF THE STATE LINE IN OREGON. THE SURVEY IS LOCATED IN TOWNSHIPS 6 NORTH, RANGES 32 AND 33 EAST, W.M. THE LINES ARE NECESSARY TO DETERMINE CERTAIN LEASE BOUNDARIES AND LINES BETWEEN LEASES HELD BY FPL ENERGY FOR THE STATELINE WIND PROJECT.

THE LOCATION OF THE STATE LINE WAS DETERMINED ON SURVEY NUMBER 01-111-B, RECORDED PREVIOUSLY. CONSULT THIS SURVEY FOR DISCUSSION OF STATE LINE DETERMINATION AND FOR LAND CORNER RECORDS OF PREVIOUSLY MONUMENTED CORNERS ON THE STATE LINE.

MUCH OF THE SURVEY AREA IS FARMED OR HAS BEEN FARMED AND IS CURRENTLY IN THE CONSERVATION RESERVE PROGRAM. DETAILED SEARCHES WERE MADE FOR EACH REQUIRED CORNER AND OTHER CONTROLLING CORNERS REQUIRED FOR PROPORTIONING. EXPLANATIONS OF METHODS OF CORNER RE-ESTABLISHMENT ARE INCLUDED ON THE FACE OF THIS PLAT UNDER "CORNER NOTES" OR ON LAND CORNER RECORDS FILED JOINTLY WITH THIS RECORD OF SURVEY.

THE ASSISTANCE OF DENNIS GAYLORD, WAPLS 23006, ORPLS 1636, IS ACKNOWLEDGED AND APPRECIATED. MR. GAYLORD, OPERATING AS AN INDEPENDENT CONSULTANT, PERFORMED AND ASSISTED IN CORNER SEARCH AND EVALUATION OF RECOVERED EVIDENCE AND PROVIDED TECHNICAL ADVICE, FROM HIS YEARS OF EXPERIENCE AS A CADASTRAL SURVEYOR FOR THE USDA, FOREST SERVICE.

CORNER SEARCHES WERE MADE WITH BEACON CORRECTED REAL TIME G.P.S. UNITS OF SUB 1 METER AND SUB 3 METER QUALITY. CORNER TIES WERE MADE WITH A LEICA 399 GEODETIC G.P.S. SYSTEM OPERATED IN STATIC (+/- 1 CM) OR REAL TIME KINEMATIC MODE, (+/- 2-4 CM) USING CLOSED TRAVERSE AND REOBSERVED, AVERAGED, RADIAL TIES. MONUMENTS WERE VISITED IN APRIL, MAY AND JUNE, 2001.

LEGEND

- ✱ - OREGON-WASHINGTON STATE LINE MILE MONUMENT SEARCHED; NOT FOUND OR REESTABLISHED UNLESS OTHERWISE NOTED. (NOTE: 1/2 MILE STATE LINE MONUMENTS WERE ALSO SEARCHED BUT WERE NOT RECOVERED UNLESS SO NOTED); SEE SURVEY NO. 01-111-B, FOR ADDITIONAL INFORMATION.
- ✱ - OREGON-WASHINGTON STATE LINE MILE OR 1/2 MILE CORNER FOUND AND REMONUMENTED ON SURVEY NO. 01-111-B. CORNERS ARE MONUMENTED WITH 2 1/4\"/>

CORNER RECOVERY NOTES:

1. STATE LINE 7 1/2 MILE CORNER. FOUND 2 1/4\"/>

REGISTERED PROFESSIONAL LAND SURVEYOR <i>William R. Wells</i> OREGON JULY 22, 1977 WILLIAM R. WELLS 1106 RENEWS 6/30/02	WILLIAM R. WELLS, PLS 357 N.E. HIGHWAY 11 P.O. BOX 1696 PENDELTON, OREGON PHONE: (541) 276-6382	PROJECT: SURVEY FOR: FPL ENERGY, INC.. STATELINE WIND PROJECT P.O. BOX 409 TOUCHET, WA 99360
DATE: 07/01 CK. BY: WRW/DLG	DR. BY: WRW NO: 00-682	

WFLORE1