

MONUMENT RECOVERY SURVEY

TOLLGATE SECTION

Weston - Elgin Highway (Route 204)

LOCATED AS FOLLOWS

T. 4N., R.37E., W.M.

- SW1/4 & SE1/4 Sec. 30
- NE 1/4 Sec. 31
- SW1/4 & SE1/4 Sec. 29
- SW1/4 & SE1/4 Sec. 28
- NE1/4 Sec. 33
- NW1/4 & NE1/4 Sec. 34
- NW1/4 & NE 1/4 Sec. 35
- SW1/4 & SE1/4 Sec. 26
- NW1/4 & NE 1/4 Sec. 36
- SW1/4 & SE1/4 Sec. 25

T. 4N., R.38E., W.M.

- SW1/4 Sec. 30
- NW1/4 & NE 1/4 Sec. 31
- All, Sec 32
- SW1/4 Sec. 30

T. 3N., R.38E., W.M.

- Lot 1, Sec. 5
- Lot 4, Sec. 4

NARRATIVE

This Survey was performed at the request of the Oregon Department of Transportation (ODOT), the purpose of which is the recovery and location of existing land boundary and Highway Right of Way monumentation, along and adjacent to the Weston - Elgin Highway, Oregon No. 330, WESTON - LANGDON LAKE SECTION.

This project begins in the SE 1/4 of the SW 1/4 of Section 30, T. 4N., R. 37E., W.M. near mile point 10.5, in Umatilla County Oregon and runs easterly to an ending in Govt. Lot 4, Section 4, T. 3N., R. 38E., W.M. near mile point 20.78, in Umatilla County Oregon.

Base Control was provided by ODOT, as shown on Umatilla Record Map of Survey 99-47-B. That Survey established monuments with geodetic and Oregon State Plane Coordinate System, North Zone, Datum NAD 83/91 coordinates for several control points throughout the project. Coordinates provided by said Survey 99-47-B are then converted to a Local Datum Plane, which provides average true terrestrial (ground) distances by applying a factor of 0.99974371 to the NAD 83/91, Oregon North Zone Coordinates. This then becomes the project datum with basis of Bearings being the said NAD 83/91, Oregon North Zone Coordinate System.

A control network is then provided through the base control as described above, using terrestrial measurements with redundant measurements to each control point. This firm provided such control measurements from Point No. 1 through No. 134, and No. 135 through 160. ODOT provided control measurements from points No. 451 through 496, all as shown on sheets 2 through 12 of this survey.

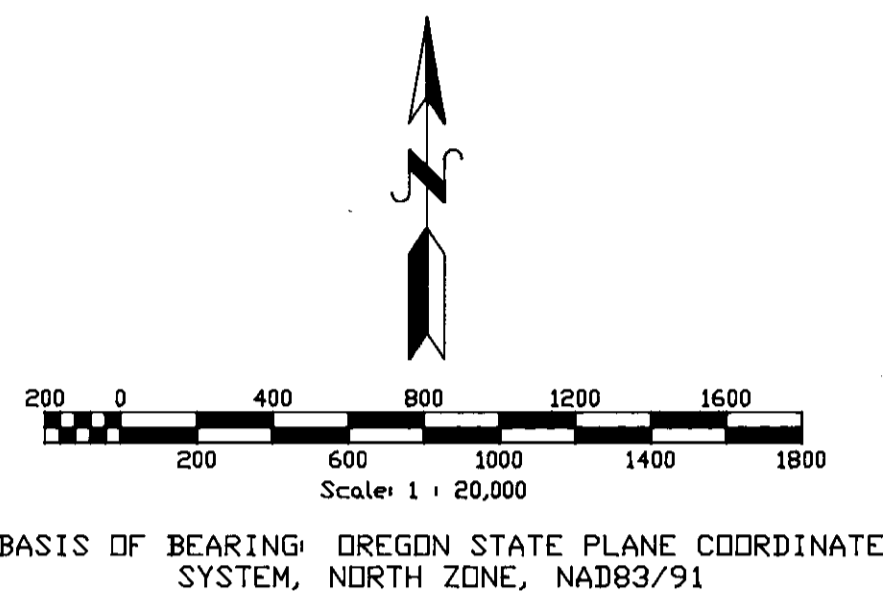
Research was conducted and all pertinent Record Maps of Survey were obtained from the Umatilla County Surveyor's Office. Initial search for monuments along and adjacent to the subject Highway is made, and monuments are recovered. Based on the initial search and relationship with monuments recovered, a search is made for all remaining monuments of record along or adjacent to the subject highway. All available monuments are located, described, identified and shown on sheets 2 through 12 of this survey. Record Map of Survey Number which references each monument recovered is shown on the descriptive note at the monument symbol.

Ferguson Surveying

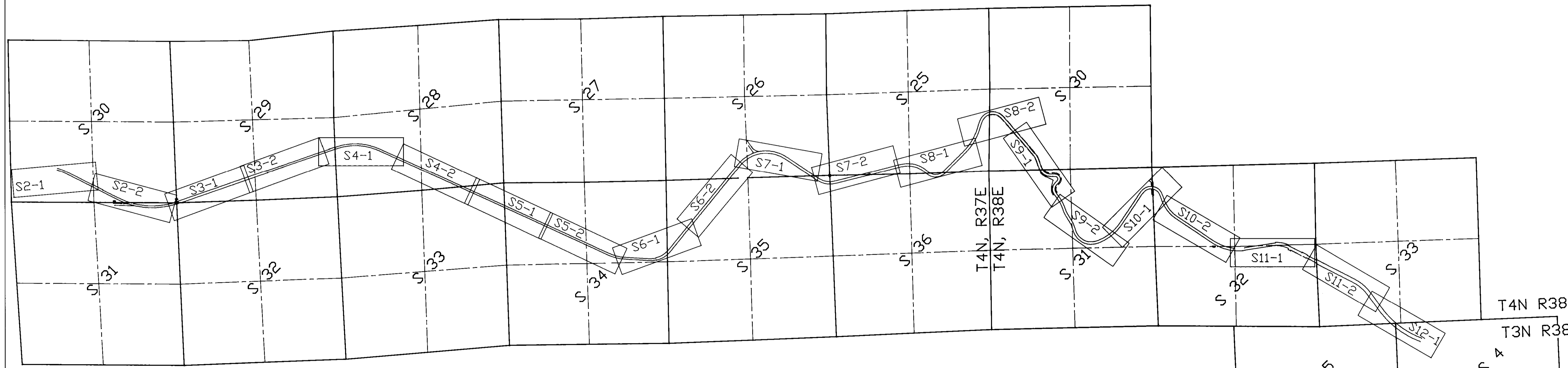


Engineering

P.O. Box 519, 210 E. Main
 MT. VERNON, OR 97865
 PHONE (541) 932-4520
 FAX (541) 932-4430
 EMAIL dfse@highdesertnet.com



BASIS OF BEARING: OREGON STATE PLANE COORDINATE SYSTEM, NORTH ZONE, NAD83/91

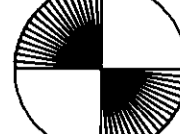


<p>MONUMENT RECOVERY SURVEY TOLLGATE SECTION Weston - Elgin Highway (Route 204) June 1999 - October 2000 Performed under contract with OREGON DEPARTMENT OF TRANSPORTATION</p>	
<p>REGISTERED PROFESSIONAL LAND SURVEYOR OREGON JULY 28, 1968 DOUGLAS M. FERGUSON 848 RENEWAL DATE: 12/31/01</p>	<p>REGISTERED PROFESSIONAL LAND SURVEYOR OREGON JULY 19, 1999 KENNETH H. DELANO JR. 49865 RENEWAL DATE: 12/31/01</p>

6-29
 D.L. Ferguson

Scopier

Ferguson Surveying



Engineering

P.O. Box 519, 210 E. Main
 MT. VERNON, OR 97865
 PHONE (541)932-4520
 FAX (541)932-4430
 EMAIL dfse@highdesertnet.com

PT No.	NORTHING	EASTING	DESCRIPTION
1	238267.743	2675516.631	NETS (modified)
2	238257.028	2675397.273	TANK
3	238325.352	2675456.499	Set Netwk. Pt.
4	238400.445	2675484.122	Set Netwk. Pt.
5	238463.807	2675532.638	Set Netwk. Pt.
6	238515.539	2675603.998	Set Netwk. Pt.
7	238544.002	2675690.921	Set Netwk. Pt.
8	238545.279	2675774.676	Set Netwk. Pt.
9	238522.079	2675866.179	Set Netwk. Pt.
10	238449.516	2675972.314	Set Netwk. Pt.
11	238408.368	2676091.066	Set Netwk. Pt.
12	238359.377	2676181.418	Set Netwk. Pt.
2000	238350.100	2676167.974	5/8" PIN
2001	238355.207	2676162.646	5/8" PIN

PT No.	NORTHING	EASTING	DESCRIPTION
12	238359.377	2676181.418	Set Netwk. Pt.
13	238288.422	2676297.071	Set Netwk. Pt.
14	238251.903	2676396.546	Set Netwk. Pt.
15	238213.849	2676446.112	Set Netwk. Pt.
16	238164.429	2676386.664	Set Netwk. Pt.
17	238156.716	2676673.448	Set Netwk. Pt.
18	238163.530	2676756.133	Set Netwk. Pt.
19	238193.493	2676845.687	Set Netwk. Pt.
20	238174.285	2676950.942	Set Netwk. Pt.
500	238324.966	2676249.806	Strategic Pt.
501	238172.013	2676924.817	Strategic Pt.
1000	238303.259	2676260.716	5/8" PIN w/Cap
2000	238350.100	2676167.974	5/8" PIN
2001	238355.207	2676162.646	5/8" PIN
2002	238155.513	2676869.489	1" IRON PIPE
2004	238198.041	2676970.579	5/8" PIN w/cap
51331	238278.308	2676350.432	5/8" PIN
51332	238260.271	2676345.764	5/8" PIN
51734	238201.826	2676470.666	5/8" PIN
51736	238187.255	2676510.882	5/8" PIN
52081	238186.549	2676579.730	5/8" PIN w/cap
52439	238167.436	2676769.662	BENCH MARK
52726	238196.641	2676934.728	5/8" PIN w/cap
61733	238295.947	2676273.059	5/8" PIN

LEGEND

- ★ Fd. Primary GPS Control, See Note at Symbol
- ▲ Set 5/8"x30" Pin w/2" Dia. Alum Cap Marked "DDOT CP (Pt. No.)" For Primary Network Control Point
- + Set 5/8"x30" Pin w/2" Dia. Alum Cap Marked "DDOT MAP (Pt. No.)" For Strategic Mapping Point
- Fd. Monument, See Note at Symbol
- Approximate Highway Centerline
- - - - - Approximate Property Boundary
- · - · - - Approximate Right of Way
- · — · — Approximate Section Line
- - - - - Approximate Section Centerline Section
- · - · - - Approximate Section Subdivisional Line
- · — · — Edge of Traveled Roadway

**MONUMENT RECOVERY SURVEY
 TOLLGATE SECTION**
 Weston - Elgin Highway (Route 204)
 June 1999 - October 2000
 Performed under contract with
 OREGON DEPARTMENT OF TRANSPORTATION

REGISTERED PROFESSIONAL LAND SURVEYOR

OREGON
 JULY 12, 1999
 DOUGLAS M. FERGUSON
 848

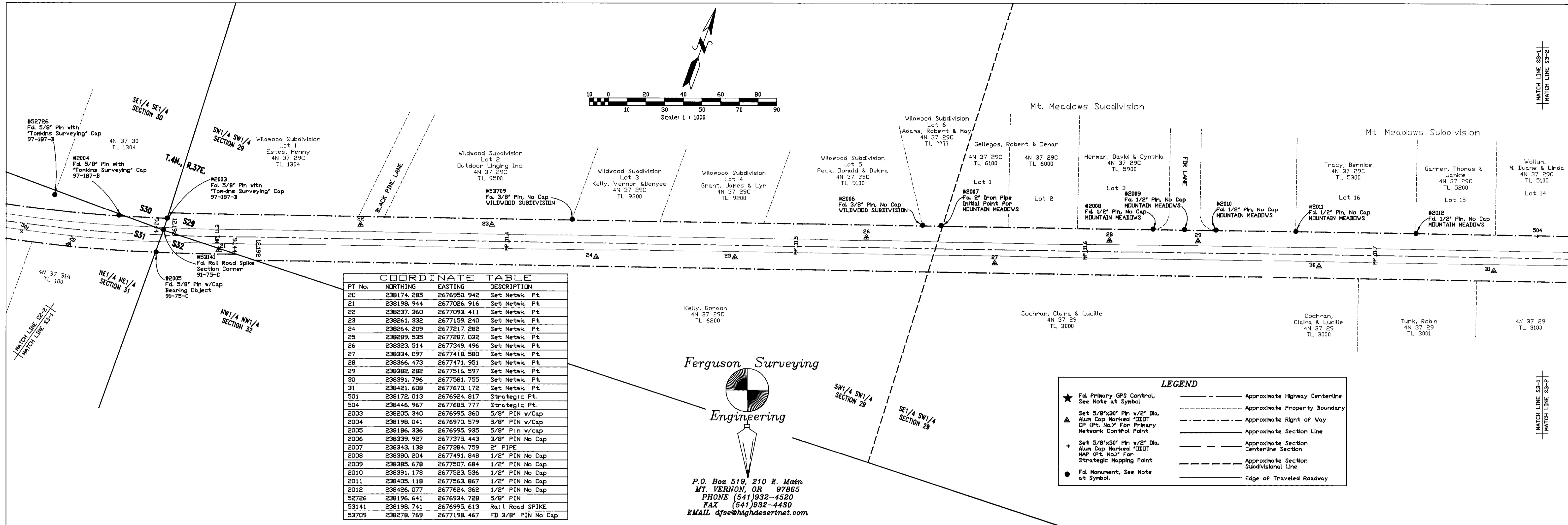
RENEWAL DATE:
 12/31/01

REGISTERED PROFESSIONAL LAND SURVEYOR

OREGON
 JULY 12, 1999
 KENNETH H. DELANO JR.
 49665

RENEWAL DATE:
 12/31/01

RECEIVED BY
 Wasilla County Surveyor
 Date 6-01
 Rec'd by [Signature]

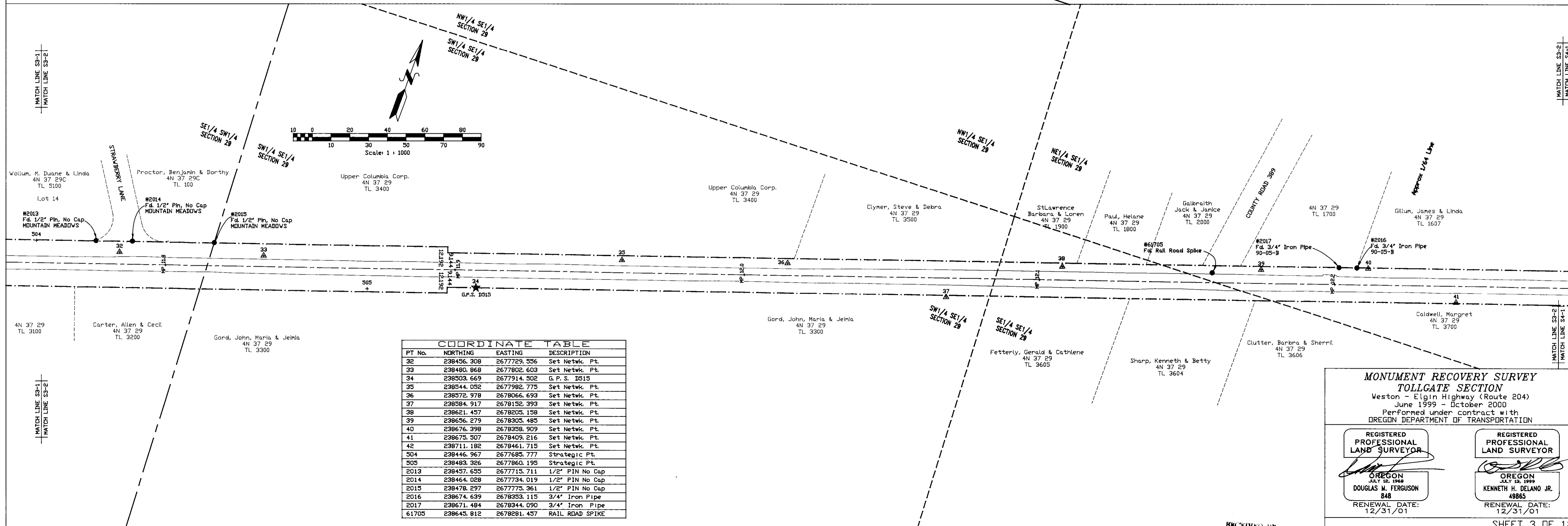


PT No.	NORTHING	EASTING	DESCRIPTION
20	238174.285	2676950.942	Set Netwk. Pt.
21	238198.944	2677026.916	Set Netwk. Pt.
22	238237.360	2677093.411	Set Netwk. Pt.
23	238261.332	2677159.240	Set Netwk. Pt.
24	238264.209	2677217.282	Set Netwk. Pt.
25	238289.535	2677287.032	Set Netwk. Pt.
26	238323.514	2677349.496	Set Netwk. Pt.
27	238334.097	2677418.580	Set Netwk. Pt.
28	238366.473	2677471.951	Set Netwk. Pt.
29	238382.282	2677516.597	Set Netwk. Pt.
30	238391.796	2677581.755	Set Netwk. Pt.
31	238421.608	2677670.172	Set Netwk. Pt.
501	238172.013	2676924.817	Strategic Pt.
504	238446.967	2677685.777	Strategic Pt.
2003	238205.340	2676995.360	5/8" PIN w/Cap
2004	238198.041	2676970.579	5/8" PIN w/Cap
2005	238186.336	2676995.935	3/8" PIN w/Cap
2006	238339.927	2677375.443	3/8" PIN No Cap
2007	238343.138	2677384.759	2" PIPE
2008	238380.204	2677491.848	1/2" PIN No Cap
2009	238385.678	2677507.684	1/2" PIN No Cap
2010	238391.178	2677523.536	1/2" PIN No Cap
2011	238405.118	2677563.867	1/2" PIN No Cap
2012	238426.077	2677624.362	1/2" PIN No Cap
52726	238196.641	2676934.728	5/8" PIN
53141	238198.741	2676995.613	Rail Road SPIKE
53709	238278.769	2677198.467	FD 3/8" PIN No Cap

Ferguson Surveying

Engineering
 P.O. Box 519, 210 E. Main
 MT. VERNON, OR 97865
 PHONE (541)932-4520
 FAX (541)932-4430
 EMAIL dfse@highdesertnet.com

LEGEND	
★ Fd. Primary GPS Control, See Note at Symbol	--- Approximate Highway Centerline
▲ Set 5/8"x30" Pin w/2" Dia. Alum Cap Marked "DDT CP (Pt. No.) For Primary Network Control Point	--- Approximate Property Boundary
+ Set 5/8"x30" Pin w/2" Dia. Alum Cap Marked "DDT MAP (Pt. No.) For Strategic Mapping Point	--- Approximate Right of Way
● Fd. Monument, See Note at Symbol	--- Approximate Section Line
	--- Approximate Section Centerline Section
	--- Approximate Section Subdivisional Line
	--- Edge of Traveled Roadway



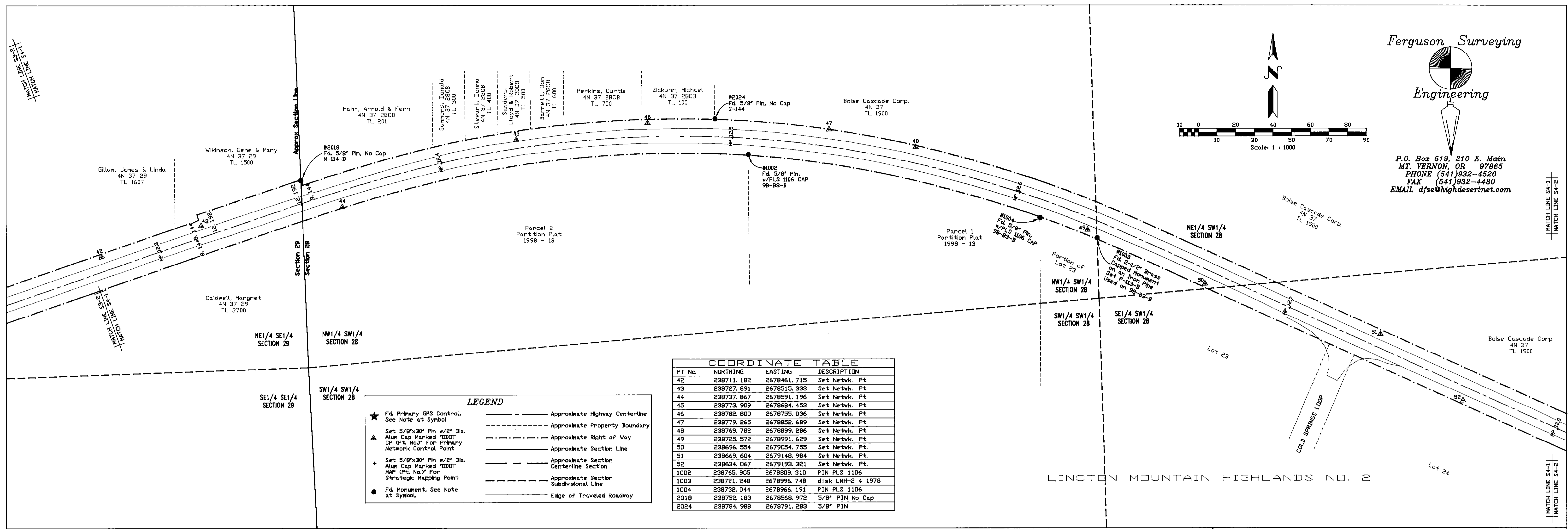
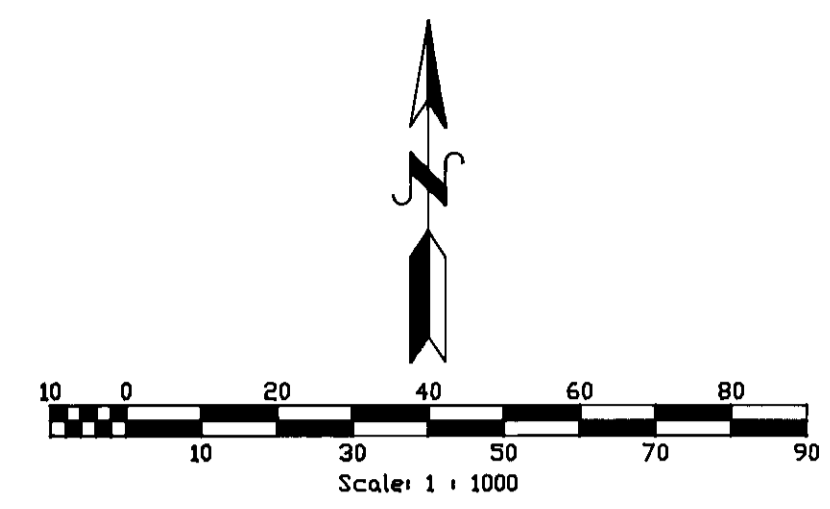
PT No.	NORTHING	EASTING	DESCRIPTION
32	238456.308	2677729.556	Set Netwk. Pt.
33	238480.868	2677802.603	Set Netwk. Pt.
34	238503.659	2677914.302	G.P.S. 0515
35	238544.052	2677982.775	Set Netwk. Pt.
36	238572.978	2678066.693	Set Netwk. Pt.
37	238584.917	2678132.393	Set Netwk. Pt.
38	238621.457	2678205.158	Set Netwk. Pt.
39	238656.279	2678305.485	Set Netwk. Pt.
40	238676.398	2678358.909	Set Netwk. Pt.
41	238675.507	2678409.216	Set Netwk. Pt.
42	238711.182	2678461.715	Set Netwk. Pt.
504	238446.967	2677685.777	Strategic Pt.
505	238483.326	2677860.195	Strategic Pt.
2013	238457.655	2677715.711	1/2" PIN No Cap
2014	238464.028	2677734.019	1/2" PIN No Cap
2015	238478.297	2677775.361	1/2" PIN No Cap
2016	238674.639	2678353.115	3/4" Iron Pipe
2017	238671.484	2678344.090	3/4" Iron Pipe
61705	238645.812	2678281.457	RAIL ROAD SPIKE

MONUMENT RECOVERY SURVEY
TOLLGATE SECTION
 Weston - Elgin Highway (Route 204)
 June 1999 - October 2000
 Performed under contract with
 OREGON DEPARTMENT OF TRANSPORTATION

REGISTERED PROFESSIONAL LAND SURVEYOR DOUGLAS M. FERGUSON 848 RENEWAL DATE: 12/31/01	REGISTERED PROFESSIONAL LAND SURVEYOR KENNETH H. DELANO JR. 48865 RENEWAL DATE: 12/31/01
--	--

RECEIVED BY
 Ursula Coon, Registrar
 Date 6-26-01
 Rec'd By UR
 Map 01-83-C

P.O. Box 519, 210 E. Main
MT. VERNON, OR 97865
PHONE (541)932-4520
FAX (541)932-4430
EMAIL dfse@highdesertnet.com

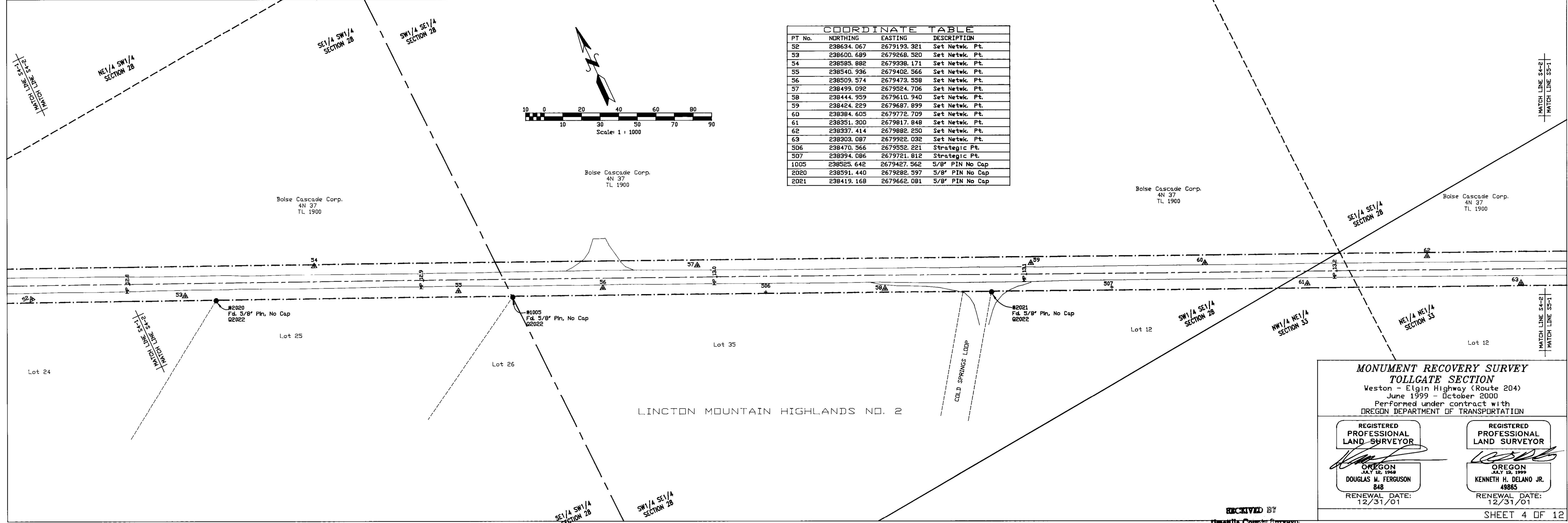


COORDINATE TABLE

PT No.	NORTHING	EASTING	DESCRIPTION
42	238711.182	2678461.715	Set Netwk. Pt.
43	238727.891	2678515.333	Set Netwk. Pt.
44	238737.867	2678591.196	Set Netwk. Pt.
45	238773.909	2678684.453	Set Netwk. Pt.
46	238782.800	2678755.036	Set Netwk. Pt.
47	238779.265	2678852.689	Set Netwk. Pt.
48	238769.782	2678899.286	Set Netwk. Pt.
49	238725.572	2678991.629	Set Netwk. Pt.
50	238696.554	2679054.755	Set Netwk. Pt.
51	238669.604	2679148.984	Set Netwk. Pt.
52	238634.067	2679193.321	Set Netwk. Pt.
1002	238765.905	2678809.310	PIN PLS 1106
1003	238721.248	2678996.748	disk LHM-2 4 1978
1004	238732.044	2678966.191	PIN PLS 1106
2018	238752.183	2678568.972	5/8" PIN No Cap
2024	238784.988	2678791.283	5/8" PIN

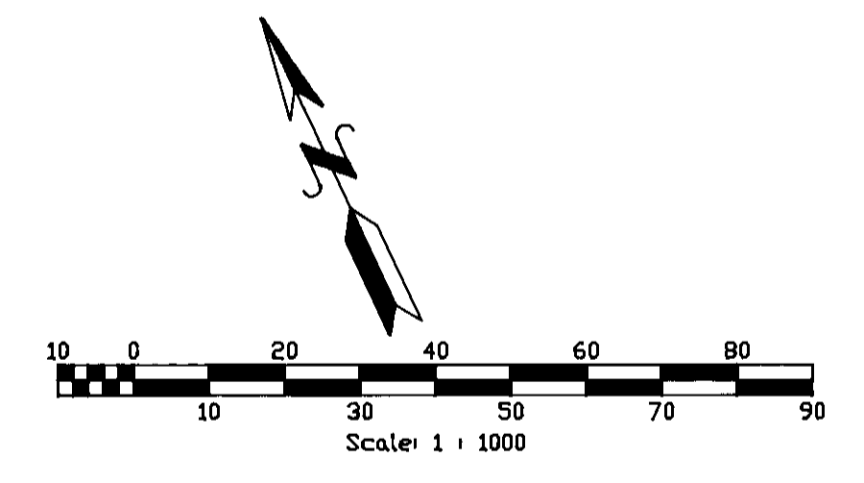
LEGEND

★ Fd. Primary GPS Control. See Note at Symbol	— Approximate Highway Centerline
▲ Set 5/8"x30" Pin w/2" Dia. Alum Cap Marked "DDDT CP (P. No.)" For Primary Network Control Point	--- Approximate Property Boundary
+ Set 5/8"x30" Pin w/2" Dia. Alum Cap Marked "DDDT MAP (P. No.)" For Strategic Mapping Point	--- Approximate Right of Way
● Fd. Monument. See Note at Symbol	--- Approximate Section Line
	--- Approximate Section Centerline
	--- Approximate Section Subdivisional Line
	--- Edge of Traveled Roadway



COORDINATE TABLE

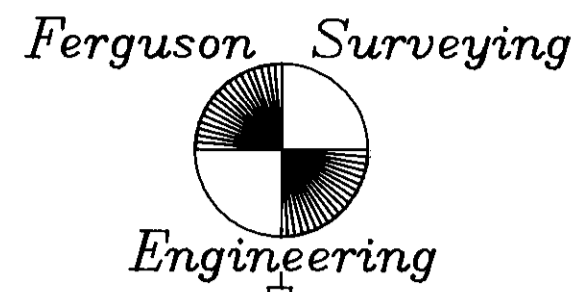
PT No.	NORTHING	EASTING	DESCRIPTION
52	238634.067	2679193.321	Set Netwk. Pt.
53	238600.689	2679268.520	Set Netwk. Pt.
54	238585.882	2679338.171	Set Netwk. Pt.
55	238540.936	2679402.566	Set Netwk. Pt.
56	238509.574	2679473.558	Set Netwk. Pt.
57	238499.092	2679524.706	Set Netwk. Pt.
58	238444.959	2679610.940	Set Netwk. Pt.
59	238424.229	2679687.899	Set Netwk. Pt.
60	238384.605	2679772.709	Set Netwk. Pt.
61	238351.300	2679817.848	Set Netwk. Pt.
62	238337.414	2679882.250	Set Netwk. Pt.
63	238303.087	2679922.032	Set Netwk. Pt.
506	238470.566	2679552.221	Strategic Pt.
507	238394.086	2679721.812	Strategic Pt.
1005	238525.642	2679427.562	5/8" PIN No Cap
2020	238591.440	2679282.597	5/8" PIN No Cap
2021	238419.168	2679662.081	5/8" PIN No Cap



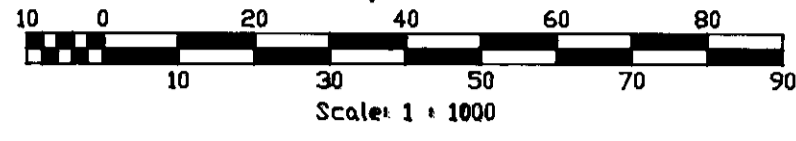
**MONUMENT RECOVERY SURVEY
TOLLGATE SECTION**
Weston - Elgin Highway (Route 204)
June 1999 - October 2000
Performed under contract with
OREGON DEPARTMENT OF TRANSPORTATION

REGISTERED PROFESSIONAL LAND SURVEYOR OREGON JUL 16, 1999 DOUGLAS M. FERGUSON 848 RENEWAL DATE: 12/31/01	REGISTERED PROFESSIONAL LAND SURVEYOR OREGON JUL 16, 1999 KENNETH H. DELANO JR. 48885 RENEWAL DATE: 12/31/01
--	--

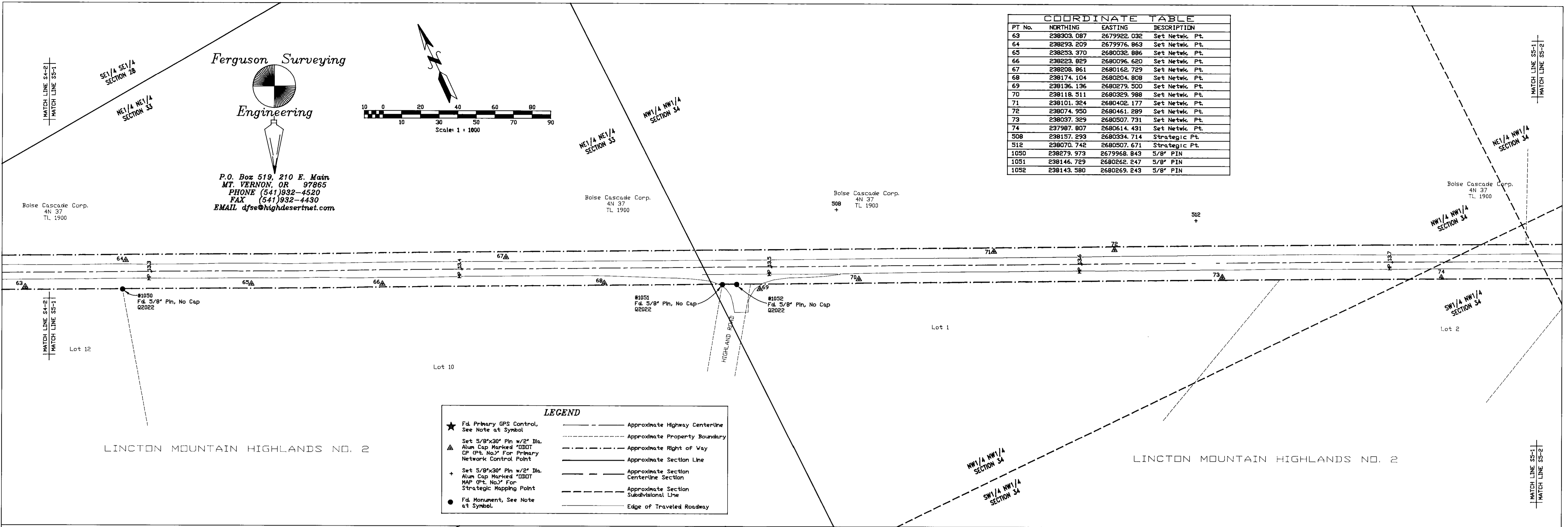
RECEIVED BY
Umatilla County Surveyor
Date: 6-01
Rec'd By: KR
No. 01-82-C



P.O. Box 519, 210 E. Main
 MT. VERNON, OR 97865
 PHONE (541)932-4520
 FAX (541)932-4430
 EMAIL dfse@highdesertnet.com



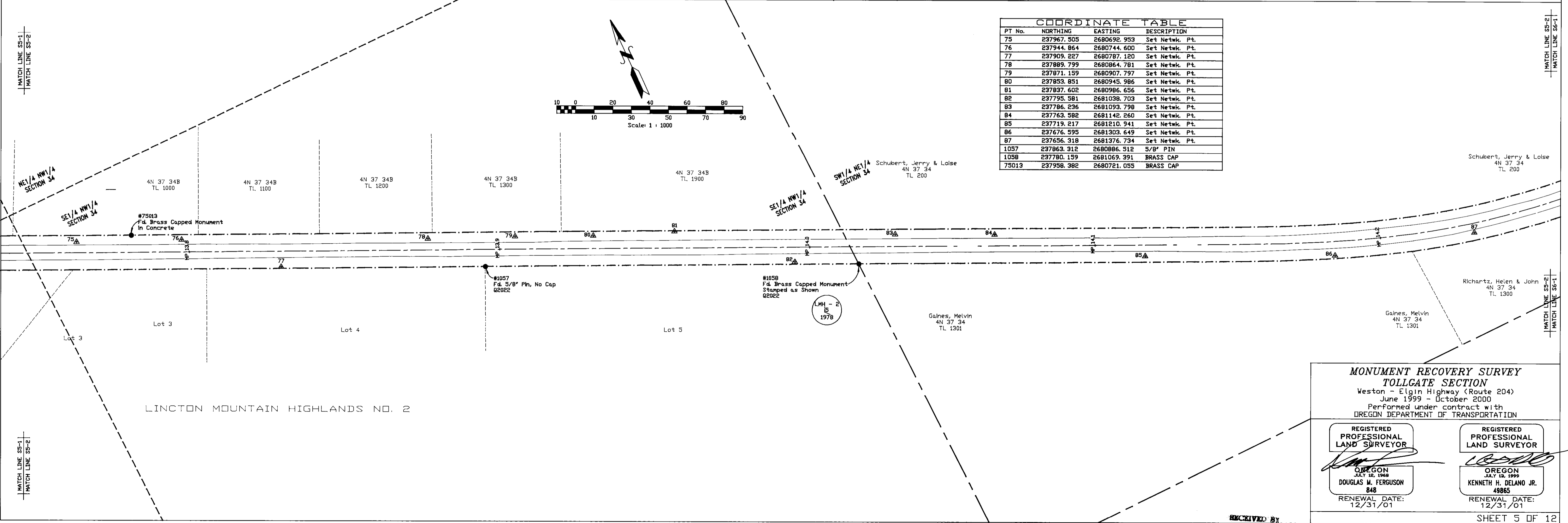
PT No.	NORTHING	EASTING	DESCRIPTION
63	238303.087	2679922.032	Set Netwk. Pt.
64	238293.209	2679976.863	Set Netwk. Pt.
65	238293.370	2680032.886	Set Netwk. Pt.
66	238223.829	2680096.620	Set Netwk. Pt.
67	238208.861	2680162.729	Set Netwk. Pt.
68	238174.104	2680204.808	Set Netwk. Pt.
69	238136.136	2680279.300	Set Netwk. Pt.
70	238118.511	2680329.988	Set Netwk. Pt.
71	238101.324	2680402.177	Set Netwk. Pt.
72	238074.950	2680461.289	Set Netwk. Pt.
73	238037.329	2680507.731	Set Netwk. Pt.
74	237987.807	2680614.431	Set Netwk. Pt.
508	238157.293	2680334.714	Strategic Pt.
512	238070.742	2680507.671	Strategic Pt.
1050	238279.973	2679968.843	5/8" PIN
1051	238146.729	2680262.247	5/8" PIN
1052	238143.580	2680269.243	5/8" PIN



LEGEND

- ★ Fd. Primary GPS Control, See Note at Symbol
- ▲ Set 5/8"x30" Pin w/2" Dia. Alum Cap Marked "DDOT" CP (Pt. No.) For Primary Network Control Point
- + Set 5/8"x30" Pin w/2" Dia. Alum Cap Marked "DDOT" MAP (Pt. No.) For Strategic Mapping Point
- Fd. Monument, See Note at Symbol
- Approximate Highway Centerline
- - - - - Approximate Property Boundary
- · - · - - Approximate Right of Way
- Approximate Section Line
- · - · - - Approximate Section Centerline Section
- - - - - Approximate Section Subdivisional Line
- Edge of Traveled Roadway

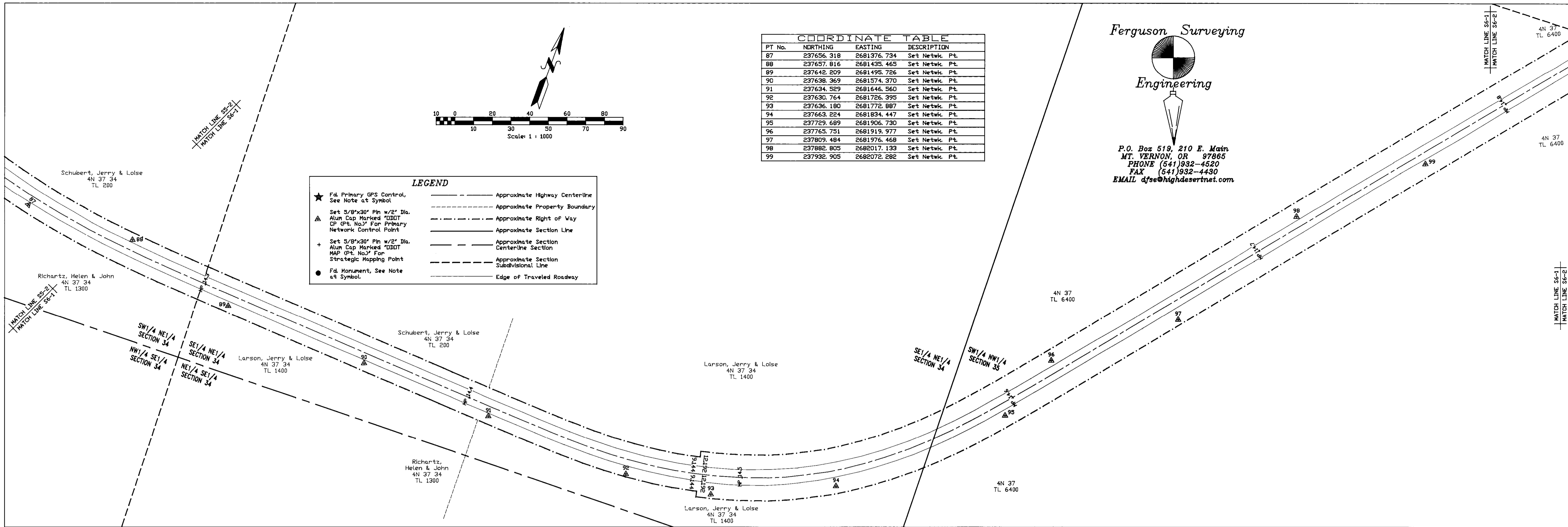
PT No.	NORTHING	EASTING	DESCRIPTION
75	237967.505	2680692.959	Set Netwk. Pt.
76	237944.864	2680744.600	Set Netwk. Pt.
77	237909.227	2680787.120	Set Netwk. Pt.
78	237889.799	2680864.781	Set Netwk. Pt.
79	237871.159	2680907.797	Set Netwk. Pt.
80	237853.851	2680945.986	Set Netwk. Pt.
81	237837.602	2680986.656	Set Netwk. Pt.
82	237795.581	2681038.703	Set Netwk. Pt.
83	237786.236	2681093.798	Set Netwk. Pt.
84	237763.582	2681142.260	Set Netwk. Pt.
85	237719.217	2681210.941	Set Netwk. Pt.
86	237676.595	2681303.649	Set Netwk. Pt.
87	237656.318	2681376.734	Set Netwk. Pt.
1057	237863.312	2680886.312	5/8" PIN
1058	237780.159	2681069.391	BRASS CAP
75013	237958.382	2680721.055	BRASS CAP



**MONUMENT RECOVERY SURVEY
 TOLLGATE SECTION**
 Weston - Elgin Highway (Route 204)
 June 1999 - October 2000
 Performed under contract with
 OREGON DEPARTMENT OF TRANSPORTATION

REGISTERED PROFESSIONAL LAND SURVEYOR OREGON JULY 18, 1988 DOUGLAS M. FERGUSON 848 RENEWAL DATE: 12/31/01	REGISTERED PROFESSIONAL LAND SURVEYOR OREGON JULY 18, 1999 KENNETH H. DELANO JR. 49865 RENEWAL DATE: 12/31/01
--	--

RECEIVED BY
 Date: 6-01
 Rec'd by: [Signature]

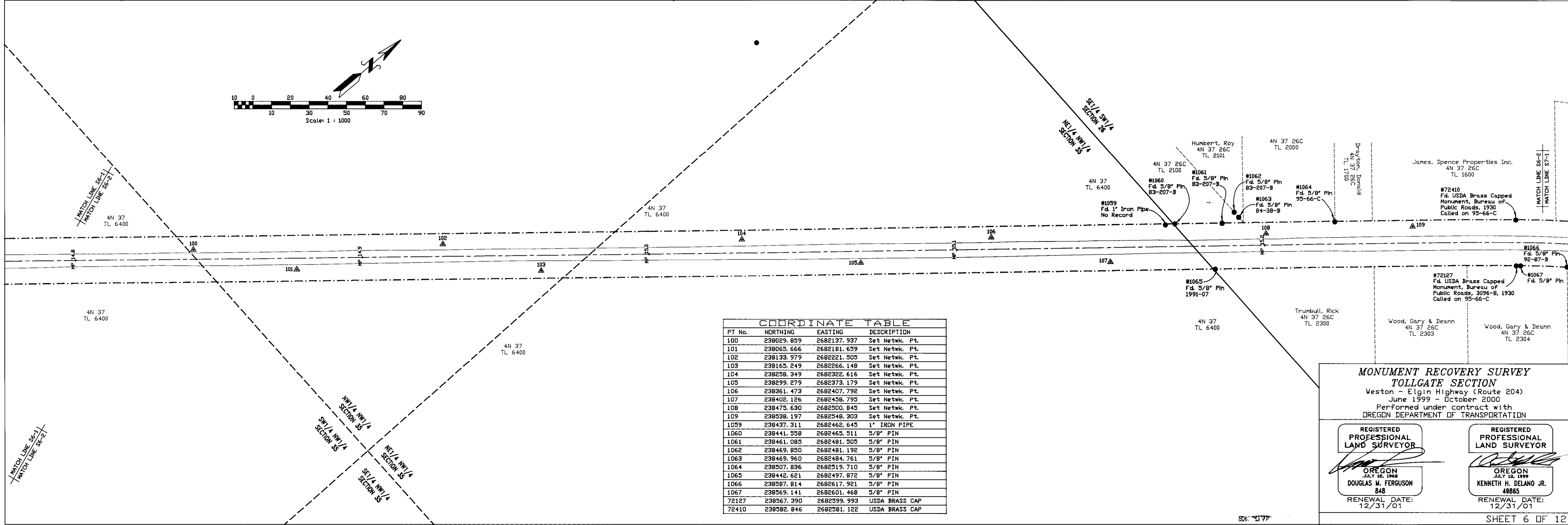


PT No.	NORTHING	EASTING	DESCRIPTION
87	237656.318	2681376.734	Set Netwk. Pt.
88	237657.816	2681435.465	Set Netwk. Pt.
89	237642.209	2681495.726	Set Netwk. Pt.
90	237638.369	2681574.370	Set Netwk. Pt.
91	237634.529	2681646.560	Set Netwk. Pt.
92	237630.764	2681726.395	Set Netwk. Pt.
93	237636.180	2681772.887	Set Netwk. Pt.
94	237663.224	2681834.447	Set Netwk. Pt.
95	237729.689	2681906.730	Set Netwk. Pt.
96	237765.751	2681919.977	Set Netwk. Pt.
97	237809.484	2681976.468	Set Netwk. Pt.
98	237882.805	2682017.133	Set Netwk. Pt.
99	237932.905	2682072.282	Set Netwk. Pt.

Ferguson Surveying
Engineering

P.O. Box 519, 210 E. Main
MT. VERNON, OR 97565
PHONE (541)932-4520
FAX (541)932-4430
EMAIL djfe@highdesertnet.com

LEGEND	
★	Fd. Primary GPS Control, See Note at Symbol
▲	Set 5/8"x30" Pin w/2" Dia. Alum Cap Marked "DDDT CP (Pt. No.)" For Primary Network Control Point
+	Set 5/8"x30" Pin w/2" Dia. Alum Cap Marked "DDDT MAP (Pt. No.)" For Strategic Mapping Point
●	Fd. Monument, See Note at Symbol
---	Approximate Highway Centerline
---	Approximate Property Boundary
---	Approximate Right of Way
---	Approximate Section Line
---	Approximate Section Centerline Section
---	Approximate Section Subdivisional Line
---	Edge of Traveled Roadway

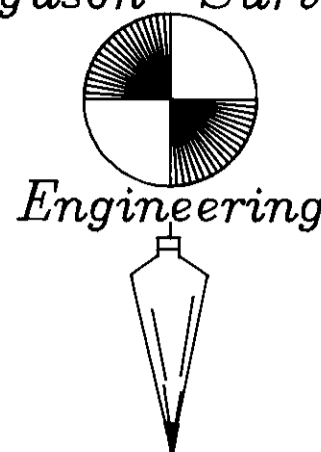


PT No.	NORTHING	EASTING	DESCRIPTION
100	238029.859	2682137.937	Set Netwk. Pt.
101	238065.666	2682181.659	Set Netwk. Pt.
102	238133.979	2682221.505	Set Netwk. Pt.
103	238165.249	2682266.148	Set Netwk. Pt.
104	238258.349	2682322.616	Set Netwk. Pt.
105	238299.279	2682373.179	Set Netwk. Pt.
106	238361.473	2682407.792	Set Netwk. Pt.
107	238402.126	2682458.795	Set Netwk. Pt.
108	238475.630	2682500.845	Set Netwk. Pt.
109	238538.197	2682548.303	Set Netwk. Pt.
1059	238437.311	2682462.645	1" IRON PIPE
1060	238441.558	2682465.511	5/8" PIN
1061	238461.085	2682481.505	5/8" PIN
1062	238469.850	2682481.192	5/8" PIN
1063	238469.960	2682484.761	5/8" PIN
1064	238507.836	2682519.710	5/8" PIN
1065	238442.621	2682497.872	5/8" PIN
1066	238587.814	2682617.921	5/8" PIN
1067	238569.141	2682601.468	5/8" PIN
72127	238567.390	2682599.993	USDA BRASS CAP
72410	238582.846	2682581.122	USDA BRASS CAP

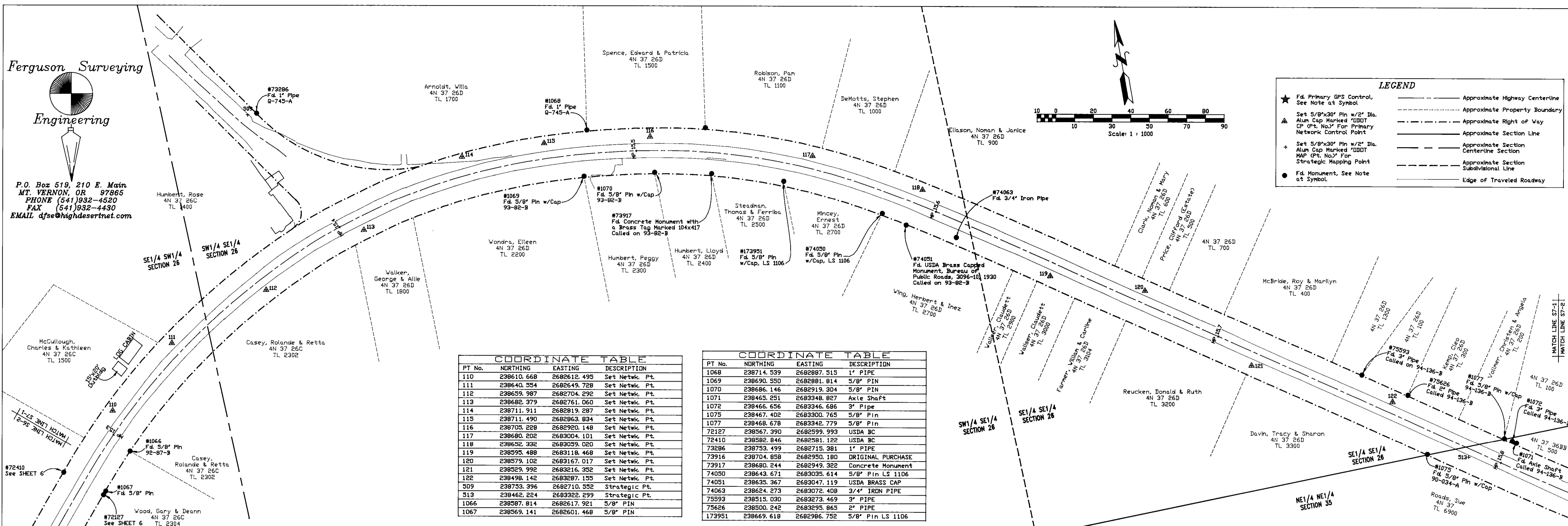
MONUMENT RECOVERY SURVEY
TOLLGATE SECTION
Weston - Elgin Highway (Route 204)
June 1999 - October 2000
Performed under contract with
OREGON DEPARTMENT OF TRANSPORTATION

<p>REGISTERED PROFESSIONAL LAND SURVEYOR</p> <p>DOUGLAS M. FERGUSON 848 RENEWAL DATE: 12/31/01</p>	<p>REGISTERED PROFESSIONAL LAND SURVEYOR</p> <p>KENNETH H. DELANO JR. 48865 RENEWAL DATE: 12/31/01</p>
--	--

Ferguson Surveying
Engineering



P.O. Box 519, 210 E. Main
MT. VERNON, OR 97865
PHONE (541)932-4520
FAX (541)932-4430
EMAIL dfse@highdesertnet.com

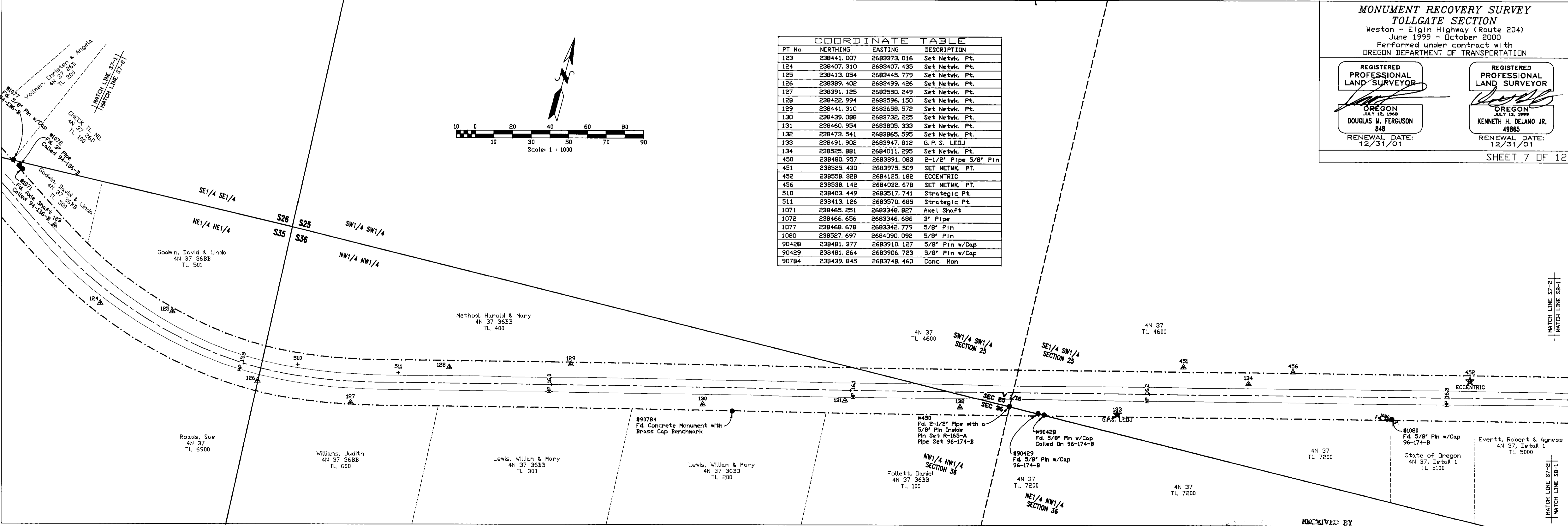


COORDINATE TABLE

PT No.	NORTHING	EASTING	DESCRIPTION
110	238610.668	2682612.495	Set Netwk. Pt.
111	238640.554	2682649.728	Set Netwk. Pt.
112	238659.987	2682704.292	Set Netwk. Pt.
113	238682.379	2682761.060	Set Netwk. Pt.
114	238711.911	2682819.287	Set Netwk. Pt.
115	238711.490	2682863.934	Set Netwk. Pt.
116	238705.228	2682920.148	Set Netwk. Pt.
117	238680.202	2683004.101	Set Netwk. Pt.
118	238652.332	2683039.020	Set Netwk. Pt.
119	238595.488	2683118.468	Set Netwk. Pt.
120	238579.102	2683167.017	Set Netwk. Pt.
121	238529.992	2683216.352	Set Netwk. Pt.
122	238498.142	2683287.155	Set Netwk. Pt.
509	238753.396	2682710.532	Strategic Pt.
513	238462.224	2683322.299	Strategic Pt.
1066	238587.814	2682617.921	5/8" PIN
1067	238569.141	2682601.468	5/8" PIN

COORDINATE TABLE

PT No.	NORTHING	EASTING	DESCRIPTION
1068	238714.539	2682887.515	1" PIPE
1069	238690.550	2682881.814	5/8" PIN
1070	238686.146	2682919.304	5/8" PIN
1071	238465.251	2683348.827	Axle Shaft
1072	238466.656	2683346.686	3" Pipe
1075	238467.402	2683300.765	5/8" PIN
1077	238468.678	2683342.779	5/8" PIN
72127	238567.390	2682599.993	USDA BC
72410	238582.846	2682581.122	USDA BC
73286	238753.499	2682715.381	1" PIPE
73916	238704.858	2682950.180	ORIGINAL PURCHASE
73917	238680.244	2682949.322	Concrete Monument
74050	238643.671	2683035.614	5/8" Pin LS 1106
74051	238635.367	2683047.119	USDA BRASS CAP
74063	238624.273	2683072.408	3/4" IRON PIPE
75593	238515.030	2683273.469	3" PIPE
75626	238500.242	2683295.865	2" PIPE
173951	238669.618	2682986.752	5/8" Pin LS 1106



COORDINATE TABLE

PT No.	NORTHING	EASTING	DESCRIPTION
123	238441.007	2683373.016	Set Netwk. Pt.
124	238407.910	2683407.435	Set Netwk. Pt.
125	238413.054	2683445.779	Set Netwk. Pt.
126	238389.402	2683499.426	Set Netwk. Pt.
127	238391.125	2683550.249	Set Netwk. Pt.
128	238422.994	2683596.150	Set Netwk. Pt.
129	238441.310	2683658.572	Set Netwk. Pt.
130	238439.088	2683732.225	Set Netwk. Pt.
131	238460.954	2683805.333	Set Netwk. Pt.
132	238473.541	2683865.595	Set Netwk. Pt.
133	238491.902	2683947.812	G.P.S. LEUJ
134	238525.881	2684011.295	Set Netwk. Pt.
450	238480.957	2683891.083	2-1/2" Pipe 5/8" Pin
451	238525.430	2683975.509	SET NETWK. PT.
452	238558.328	2684125.182	ECCENTRIC
456	238538.142	2684032.678	SET NETWK. PT.
510	238403.449	2683517.741	Strategic Pt.
511	238413.126	2683570.685	Strategic Pt.
1071	238465.251	2683348.827	Axle Shaft
1072	238466.656	2683346.686	3" Pipe
1077	238468.678	2683342.779	5/8" PIN
1080	238527.697	2684090.092	5/8" PIN
90428	238481.377	2683910.127	5/8" Pin w/Cap
90429	238481.264	2683906.723	5/8" Pin w/Cap
90784	238439.845	2683748.460	Conc. Mon

**MONUMENT RECOVERY SURVEY
TOLLGATE SECTION**
Weston - Elgin Highway (Route 204)
June 1999 - October 2000
Performed under contract with
OREGON DEPARTMENT OF TRANSPORTATION

REGISTERED
PROFESSIONAL
LAND SURVEYOR

OREGON
JULY 12, 1968
DOUGLAS W. FERGUSON

RENEWAL DATE:
12/31/01

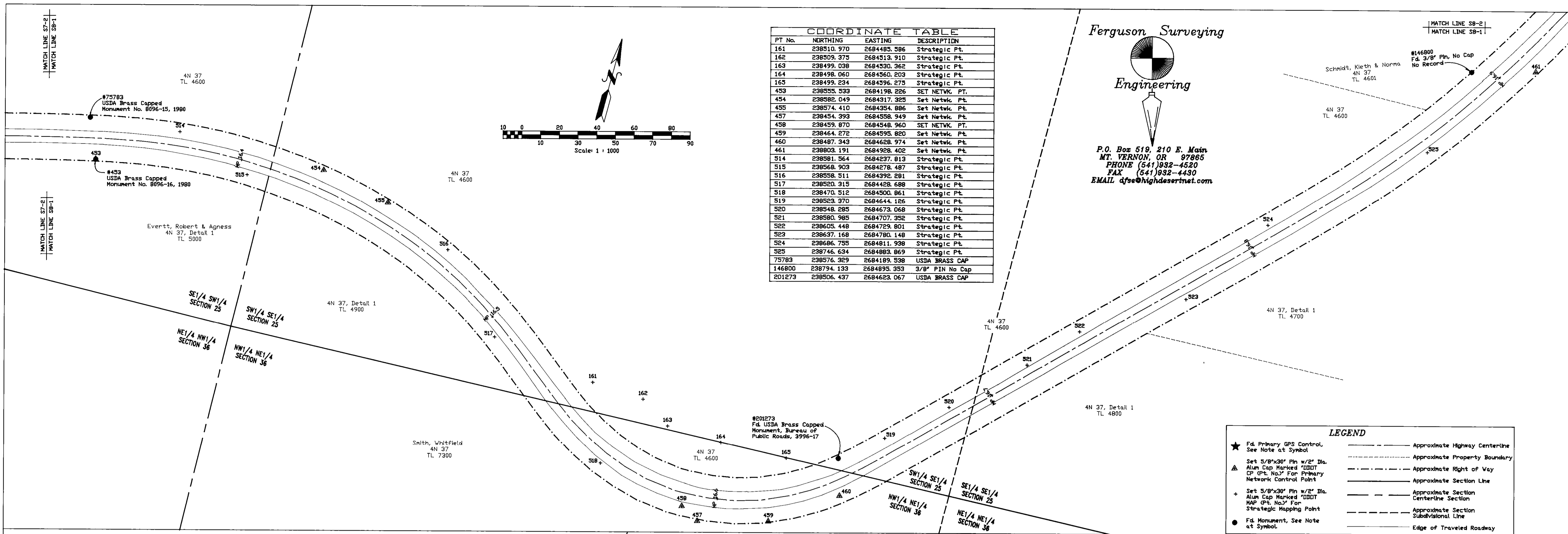
REGISTERED
PROFESSIONAL
LAND SURVEYOR

OREGON
JULY 13, 1999
KENNETH H. DELANO JR.
49863

RENEWAL DATE:
12/31/01

SHEET 7 OF 12

RECEIVED BY
Date
Checked by

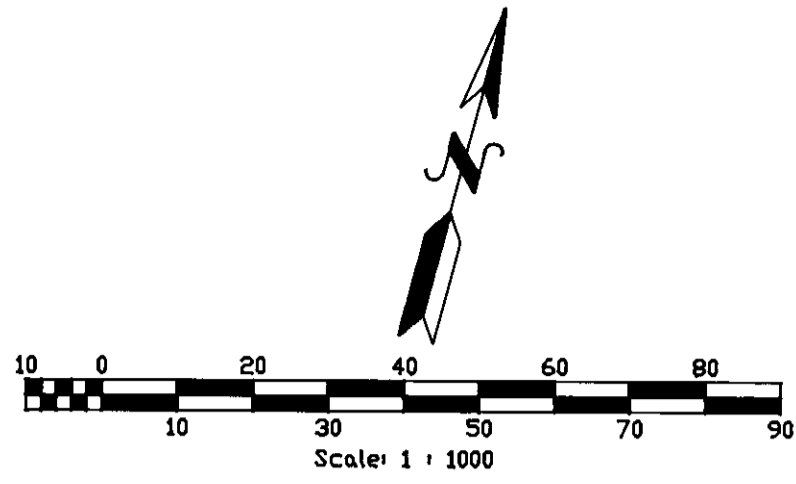


COORDINATE TABLE

PT No.	NORTHING	EASTING	DESCRIPTION
161	238510.970	2684485.386	Strategic Pt.
162	238509.375	2684519.910	Strategic Pt.
163	238499.038	2684530.362	Strategic Pt.
164	238498.060	2684560.203	Strategic Pt.
165	238499.234	2684396.275	Strategic Pt.
453	238558.593	2684198.226	SET NETWK. PT.
454	238582.049	2684317.925	Set Netwk. Pt.
455	238574.410	2684354.886	Set Netwk. Pt.
457	238454.393	2684558.949	Set Netwk. Pt.
458	238459.870	2684548.960	SET NETWK. PT.
459	238464.272	2684595.820	Set Netwk. Pt.
460	238487.343	2684628.974	Set Netwk. Pt.
461	238803.191	2684928.402	Set Netwk. Pt.
514	238581.564	2684278.813	Strategic Pt.
515	238568.903	2684278.487	Strategic Pt.
516	238558.511	2684392.281	Strategic Pt.
517	238520.315	2684428.688	Strategic Pt.
518	238470.512	2684500.861	Strategic Pt.
519	238523.370	2684644.126	Strategic Pt.
520	238548.285	2684673.068	Strategic Pt.
521	238580.985	2684707.352	Strategic Pt.
522	238605.448	2684729.801	Strategic Pt.
523	238637.168	2684780.148	Strategic Pt.
524	238656.735	2684811.598	Strategic Pt.
525	238746.634	2684883.869	Strategic Pt.
75783	238576.329	2684189.538	USDA BRASS CAP
146800	238794.133	2684895.353	3/8" PIN No Cap
201273	238506.437	2684623.067	USDA BRASS CAP

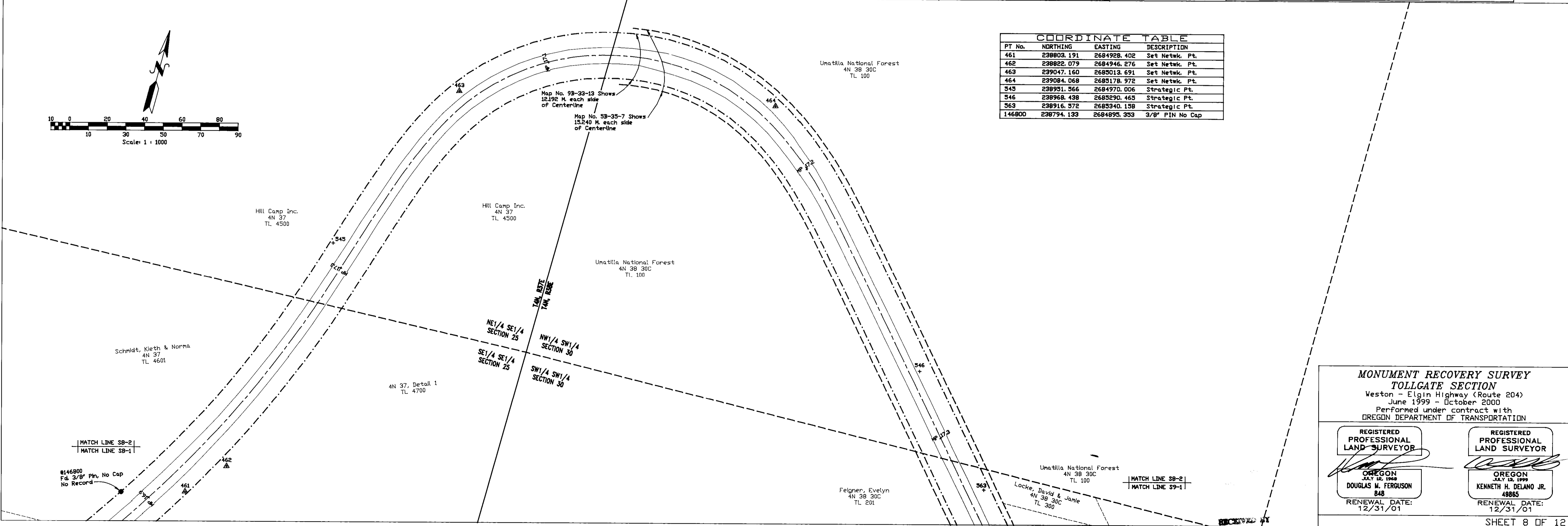
**Ferguson Surveying
Engineering**

P.O. Box 519, 210 E. Main
MT. VERNON, OR 97865
PHONE (541) 932-4520
FAX (541) 932-4430
EMAIL djfe@highdesertnet.com



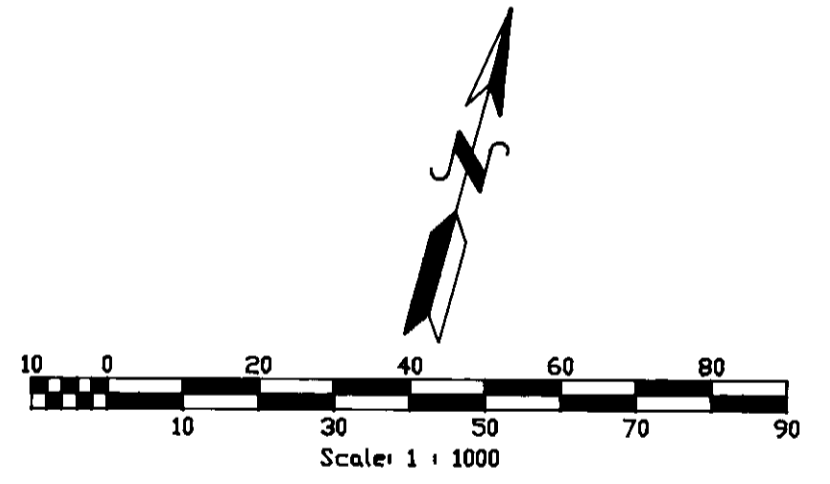
LEGEND

★ Fd. Primary GPS Control, See Note at Symbol	— Approximate Highway Centerline
△ Set 5/8"x30" Pin w/2" Dia. Alum Cap Marked "DDOT" CP (P.S. No.) For Primary Network Control Point	— Approximate Property Boundary
+ Set 5/8"x30" Pin w/2" Dia. Alum Cap Marked "DDOT" MAP (P.S. No.) For Strategic Mapping Point	— Approximate Right of Way
● Fd. Monument, See Note at Symbol	— Approximate Section Line
	— Approximate Section Centerline Section
	— Approximate Section Subdivisional Line
	— Edge of Traveled Roadway



COORDINATE TABLE

PT No.	NORTHING	EASTING	DESCRIPTION
461	238803.191	2684928.402	Set Netwk. Pt.
462	238822.079	2684946.276	Set Netwk. Pt.
463	239047.160	2685013.691	Set Netwk. Pt.
464	239084.068	2685178.972	Set Netwk. Pt.
545	238951.566	2684970.006	Strategic Pt.
546	238968.438	2685290.465	Strategic Pt.
563	238916.572	2685340.158	Strategic Pt.
146800	238794.133	2684895.353	3/8" PIN No Cap

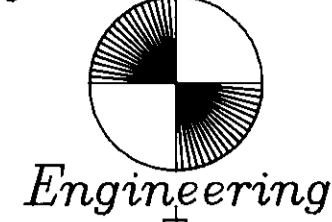


**MONUMENT RECOVERY SURVEY
TOLLGATE SECTION**
Weston - Elgin Highway (Route 204)
June 1999 - October 2000
Performed under contract with
OREGON DEPARTMENT OF TRANSPORTATION

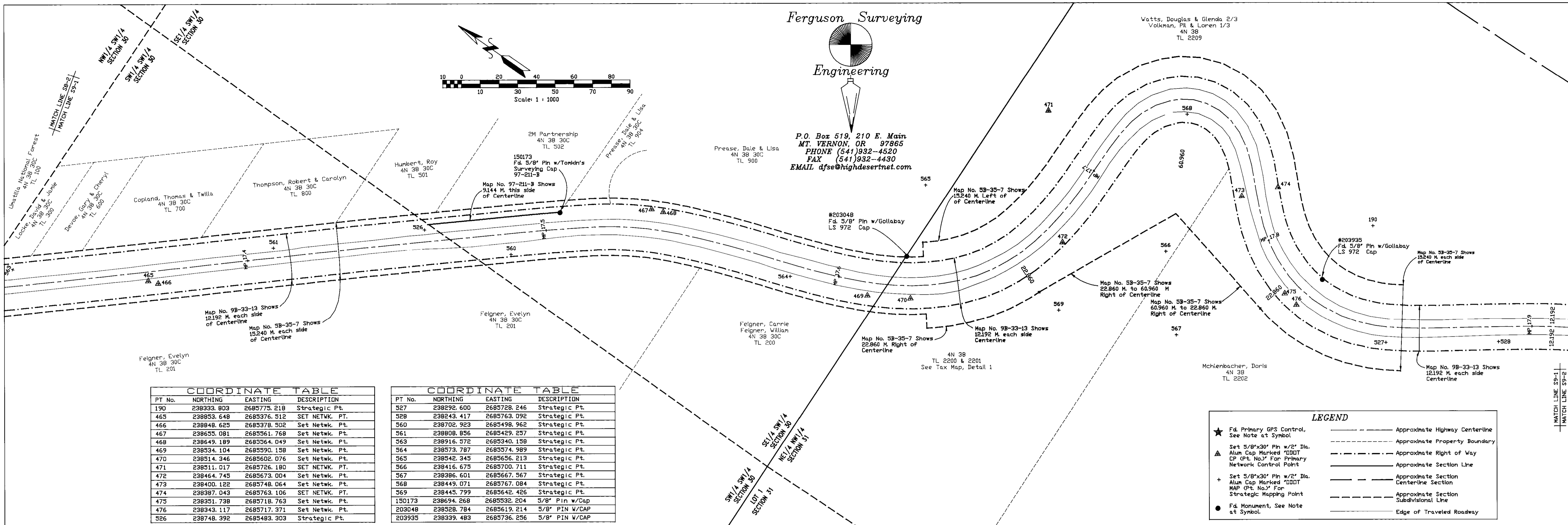
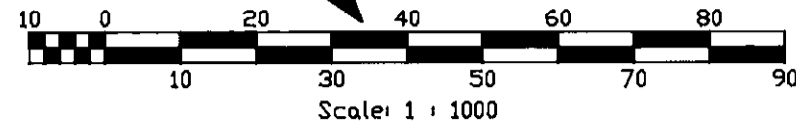
<p>REGISTERED PROFESSIONAL LAND SURVEYOR</p> <p><i>[Signature]</i></p> <p>OREGON JULY 12, 1999 DOUGLAS M. FERGUSON 848</p> <p>RENEWAL DATE: 12/31/01</p>	<p>REGISTERED PROFESSIONAL LAND SURVEYOR</p> <p><i>[Signature]</i></p> <p>OREGON JULY 12, 1999 KENNETH H. DELANO JR. 48865</p> <p>RENEWAL DATE: 12/31/01</p>
--	--

Umatilla County Register
Date 6-01
Rec'd by [Signature]

Ferguson Surveying



P.O. Box 519, 210 E. Main
 MT. VERNON, OR 97865
 PHONE (541) 932-4520
 FAX (541) 932-4430
 EMAIL dfse@highdesertnet.com

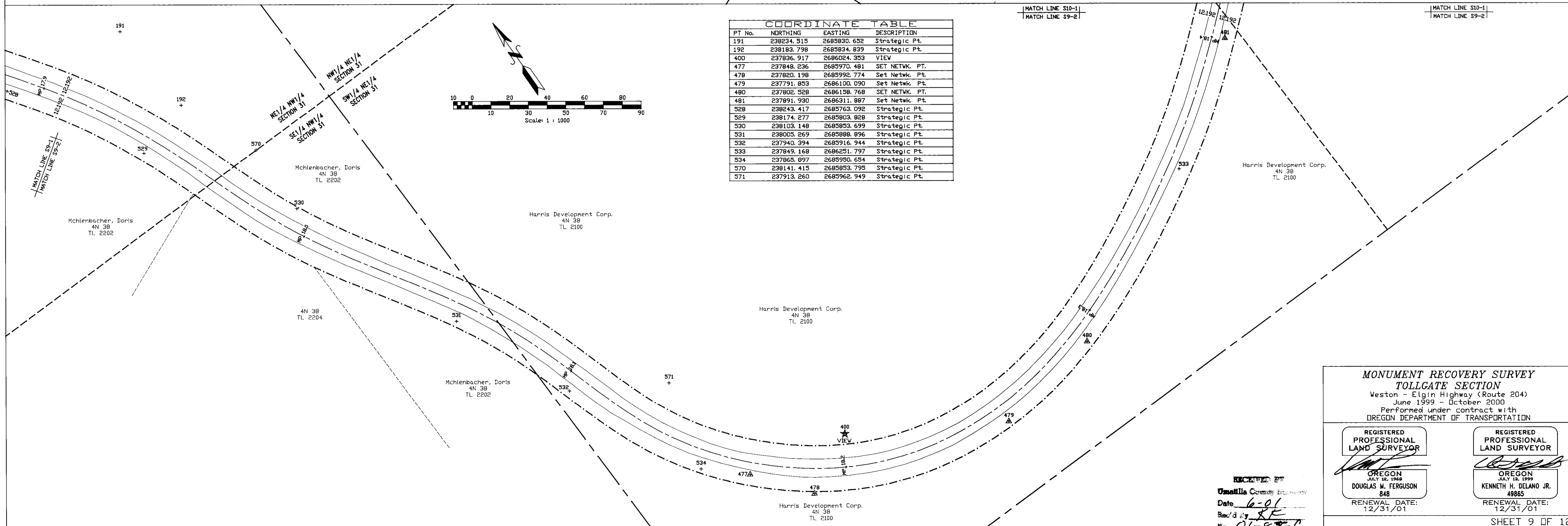


PT No.	NORTHING	EASTING	DESCRIPTION
190	238333.803	2685775.218	Strategic Pt.
465	238853.648	2685376.512	SET NETWK. PT.
466	238848.625	2685378.502	Set Netwk. Pt.
467	238655.081	2685561.768	Set Netwk. Pt.
468	238649.189	2685564.049	Set Netwk. Pt.
469	238534.104	2685590.158	Set Netwk. Pt.
470	238514.346	2685602.076	Set Netwk. Pt.
471	238511.017	2685726.180	SET NETWK. PT.
472	238464.745	2685673.004	Set Netwk. Pt.
473	238400.122	2685748.064	Set Netwk. Pt.
474	238387.043	2685763.106	SET NETWK. PT.
475	238351.738	2685718.763	Set Netwk. Pt.
476	238343.117	2685717.371	Set Netwk. Pt.
926	238748.392	2685483.303	Strategic Pt.

PT No.	NORTHING	EASTING	DESCRIPTION
527	238292.600	2685728.246	Strategic Pt.
528	238243.417	2685763.092	Strategic Pt.
560	238708.923	2685498.962	Strategic Pt.
561	238808.856	2685429.257	Strategic Pt.
563	238916.572	2685340.158	Strategic Pt.
564	238573.787	2685574.989	Strategic Pt.
565	238542.345	2685656.213	Strategic Pt.
566	238416.675	2685700.711	Strategic Pt.
567	238386.601	2685667.567	Strategic Pt.
568	238449.071	2685767.084	Strategic Pt.
569	238445.799	2685642.426	Strategic Pt.
150173	238694.268	2685532.204	5/8" Pin w/Cap
203048	238528.784	2685619.214	5/8" PIN W/CAP
203935	238339.483	2685736.256	5/8" PIN W/CAP

LEGEND

- ★ Fd. Primary GPS Control, See Note at Symbol
- Set 5/8"x30" Pin w/2" Dia. Alum Cap Marked "DDDT CP (Pt. No.)" For Primary Network Control Point
- Set 5/8"x30" Pin w/2" Dia. Alum Cap Marked "DDDT MAP (Pt. No.)" For Strategic Mapping Point
- Fd. Monument, See Note at Symbol
- Approximate Highway Centerline
- Approximate Property Boundary
- Approximate Right of Way
- Approximate Section Line
- Approximate Section Centerline Section
- Approximate Section Subdivisional Line
- Edge of Traveled Roadway



PT No.	NORTHING	EASTING	DESCRIPTION
191	238234.515	2685830.652	Strategic Pt.
192	238183.798	2685834.839	Strategic Pt.
400	237836.917	2686024.353	VIEW
477	237848.236	2685970.481	SET NETWK. PT.
478	237820.198	2685992.774	Set Netwk. Pt.
479	237791.853	2686100.090	Set Netwk. Pt.
480	237802.528	2686158.768	SET NETWK. PT.
481	237891.930	2686211.887	Set Netwk. Pt.
528	238243.417	2685763.092	Strategic Pt.
529	238174.277	2685803.828	Strategic Pt.
530	238103.148	2685853.699	Strategic Pt.
531	238005.269	2685898.896	Strategic Pt.
532	237940.394	2685916.944	Strategic Pt.
533	237849.168	2686251.797	Strategic Pt.
534	237865.897	2685950.654	Strategic Pt.
570	238141.415	2685853.795	Strategic Pt.
571	237913.260	2685962.949	Strategic Pt.

**MONUMENT RECOVERY SURVEY
 TOLLGATE SECTION**
 Weston - Elgin Highway (Route 204)
 June 1999 - October 2000
 Performed under contract with
 OREGON DEPARTMENT OF TRANSPORTATION

REGISTERED PROFESSIONAL LAND SURVEYOR

OREGON
 JULY 12, 1999
 DOUGLAS M. FERGUSON
 848

RENEWAL DATE:
 12/31/01

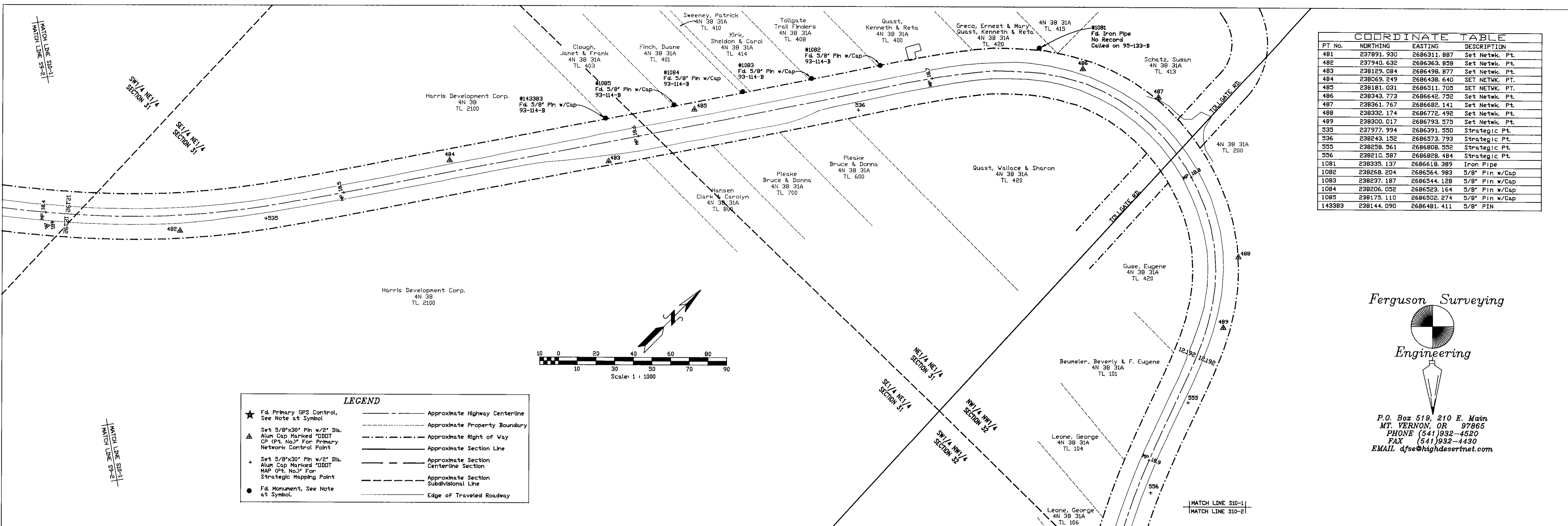
REGISTERED PROFESSIONAL LAND SURVEYOR

OREGON
 JULY 12, 1999
 KENNETH H. DELANO JR.
 49865

RENEWAL DATE:
 12/31/01

RECEIVED BY
 Umadilla Cemetery Association
 Date: 6-01
 Rec'd by: KE
 No. 01-882-C

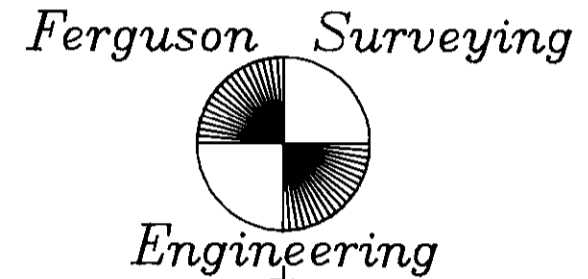
SHEET 9 OF 12



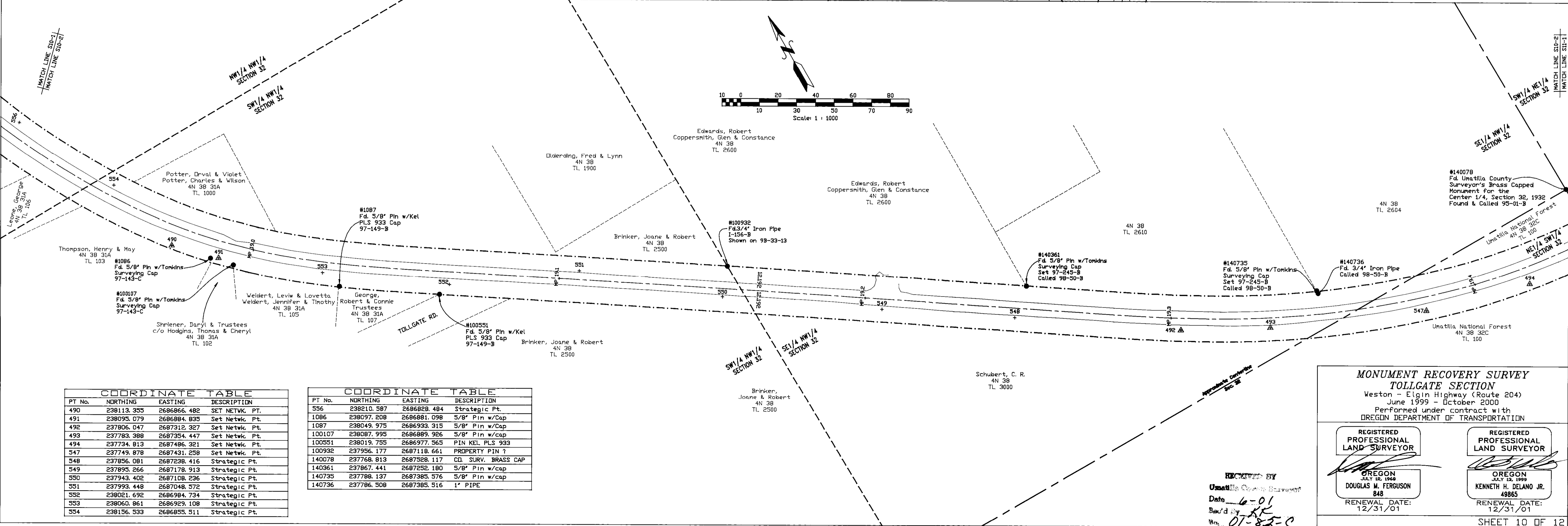
PT No.	NORTHING	EASTING	DESCRIPTION
481	237991.930	2686311.887	Set Netwk. Pt.
482	237940.632	2686363.898	Set Netwk. Pt.
483	238129.084	2686498.877	Set Netwk. Pt.
484	238069.249	2686438.640	Set Netwk. Pt.
485	238181.031	2686311.705	Set Netwk. Pt.
486	238343.773	2686642.792	Set Netwk. Pt.
487	238361.767	2686682.141	Set Netwk. Pt.
488	238332.174	2686772.492	Set Netwk. Pt.
489	238300.017	2686793.575	Set Netwk. Pt.
535	237977.994	2686391.550	Strategic Pt.
536	238243.152	2686573.793	Strategic Pt.
555	238258.561	2686808.552	Strategic Pt.
556	238210.587	2686828.484	Strategic Pt.
1081	238335.137	2686618.389	Iron Pipe
1082	238268.204	2686564.983	5/8" Pin w/Cap
1083	238237.187	2686544.128	5/8" Pin w/Cap
1084	238206.052	2686523.164	5/8" Pin w/Cap
1085	238175.110	2686502.274	5/8" Pin w/Cap
14383	238144.090	2686481.411	5/8" PIN

LEGEND

★ Fd. Primary GPS Control, See Note at Symbol	----- Approximate Highway Centerline
▲ Set 5/8"x30" Pin w/2" Dia. Alum Cap Marked "DDOT CP (Pt. No.) For Primary Network Control Point	----- Approximate Property Boundary
+ Set 5/8"x30" Pin w/2" Dia. Alum Cap Marked "DDOT MAP (Pt. No.) For Strategic Mapping Point	----- Approximate Right of Way
● Fd. Monument, See Note at Symbol	----- Approximate Section Line
	----- Approximate Section Centerline Section
	----- Approximate Section Subdivisional Line
	----- Edge of Traveled Roadway



P.O. Box 519, 210 E. Main
 MT. VERNON, OR 97865
 PHONE (541)932-4520
 FAX (541)932-4430
 EMAIL dfse@highdesertnet.com



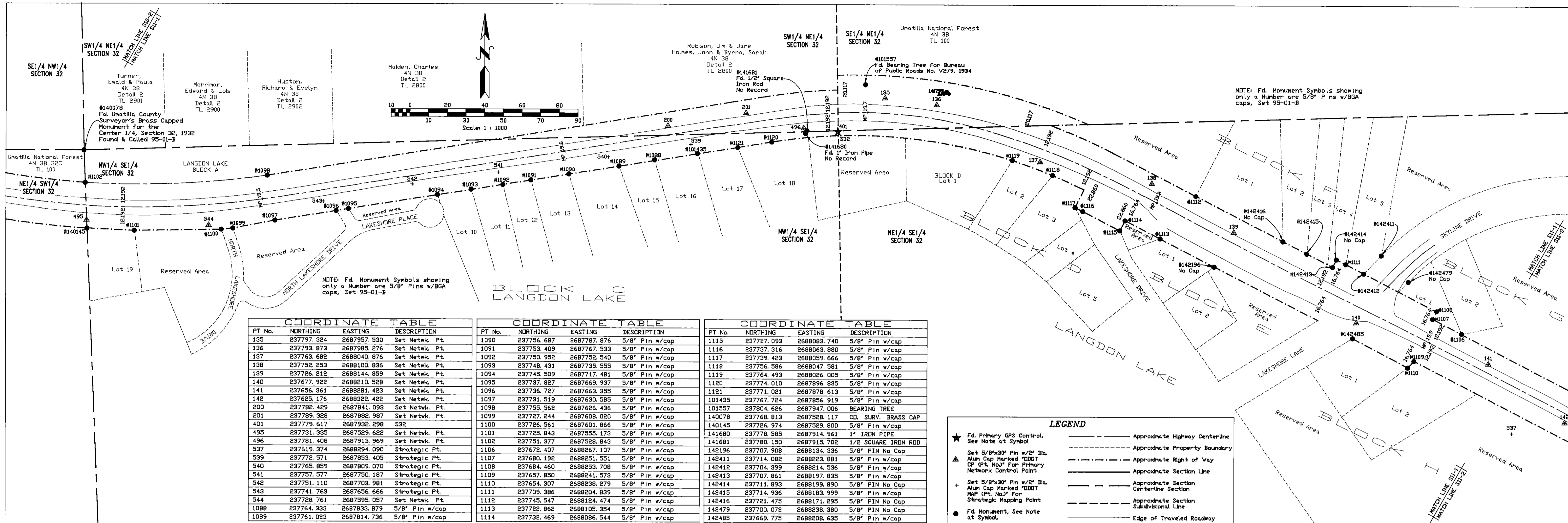
PT No.	NORTHING	EASTING	DESCRIPTION
490	238113.355	2686866.482	SET NETWK. PT.
491	238095.079	2686884.835	Set Netwk. Pt.
492	237806.047	2687312.327	Set Netwk. Pt.
493	237783.388	2687354.447	Set Netwk. Pt.
494	237734.813	2687486.321	Set Netwk. Pt.
547	237749.878	2687431.258	Set Netwk. Pt.
548	237856.081	2687238.416	Strategic Pt.
549	237893.266	2687178.913	Strategic Pt.
550	237943.402	2687108.236	Strategic Pt.
551	237993.448	2687048.372	Strategic Pt.
552	238021.652	2686984.734	Strategic Pt.
553	238060.861	2686929.108	Strategic Pt.
554	238156.533	2686855.511	Strategic Pt.

PT No.	NORTHING	EASTING	DESCRIPTION
556	238210.587	2686828.484	Strategic Pt.
1086	238097.208	2686881.098	5/8" Pin w/Cap
1087	238049.975	2686933.315	5/8" Pin w/Cap
100107	238087.995	2686889.926	5/8" Pin w/Cap
100551	238019.755	2686977.565	PIN KEL PLS 933
100932	237956.177	2687118.661	PROPERTY PIN ?
140078	237758.813	2687528.117	CD. SURV. BRASS CAP
140361	237867.441	2687252.180	5/8" Pin w/Cap
140735	237788.137	2687385.576	5/8" Pin w/Cap
140736	237786.508	2687385.516	1" PIPE

MONUMENT RECOVERY SURVEY
TOLLGATE SECTION
 Weston - Elgin Highway (Route 204)
 June 1999 - October 2000
 Performed under contract with
 OREGON DEPARTMENT OF TRANSPORTATION

<p>REGISTERED PROFESSIONAL LAND SURVEYOR</p> <p><i>[Signature]</i></p> <p>OREGON JULY 18, 1968 DOUGLAS M. FERGUSON 848</p> <p>RENEWAL DATE: 12/31/01</p>	<p>REGISTERED PROFESSIONAL LAND SURVEYOR</p> <p><i>[Signature]</i></p> <p>OREGON JULY 13, 1999 KENNETH H. DELANO JR. 4885</p> <p>RENEWAL DATE: 12/31/01</p>
--	---

RECEIVED BY
 Unatilla County Surveyor
 Date: 6-01
 Rec'd by: KK
 No: 07-82-C



COORDINATE TABLE				COORDINATE TABLE				COORDINATE TABLE			
PT No.	NORTHING	EASTING	DESCRIPTION	PT No.	NORTHING	EASTING	DESCRIPTION	PT No.	NORTHING	EASTING	DESCRIPTION
135	237797.324	2687957.530	Set Netwk. Pt.	1090	237756.687	2687787.876	5/8" Pin w/cap	1115	237727.093	2688083.740	5/8" Pin w/cap
136	237793.873	2687985.276	Set Netwk. Pt.	1091	237753.409	2687767.533	5/8" Pin w/cap	1116	237737.316	2688063.880	5/8" Pin w/cap
137	237763.682	2688040.876	Set Netwk. Pt.	1092	237750.952	2687752.540	5/8" Pin w/cap	1117	237739.423	2688059.666	5/8" Pin w/cap
138	237752.253	2688100.836	Set Netwk. Pt.	1093	237748.431	2687735.555	5/8" Pin w/cap	1118	237756.586	2688047.581	5/8" Pin w/cap
139	237726.212	2688144.899	Set Netwk. Pt.	1094	237745.509	2687717.481	5/8" Pin w/cap	1119	237764.493	2688026.005	5/8" Pin w/cap
140	237677.922	2688210.528	Set Netwk. Pt.	1095	237737.827	2687669.937	5/8" Pin w/cap	1120	237774.010	2687896.835	5/8" Pin w/cap
141	237656.361	2688281.423	Set Netwk. Pt.	1096	237736.727	2687663.355	5/8" Pin w/cap	1121	237771.021	2687878.613	5/8" Pin w/cap
142	237625.176	2688322.422	Set Netwk. Pt.	1097	237731.519	2687630.585	5/8" Pin w/cap	101435	237767.724	2687856.919	5/8" Pin w/cap
200	237792.429	2687841.093	Set Netwk. Pt.	1098	237735.562	2687626.436	5/8" Pin w/cap	140078	237768.813	2687528.117	CD. SURV. BRASS CAP
201	237789.328	2687882.987	Set Netwk. Pt.	1099	237727.244	2687608.020	5/8" Pin w/cap	140145	237726.974	2687529.800	5/8" Pin w/cap
401	237779.617	2687932.298	S32	1100	237726.561	2687601.866	5/8" Pin w/cap	141680	237778.585	2687914.961	1" IRON PIPE
495	237731.335	2687929.622	Set Netwk. Pt.	1101	237725.843	2687555.173	5/8" Pin w/cap	141681	237780.150	2687915.702	1/2 SQUARE IRON ROD
496	237781.408	2687913.969	Set Netwk. Pt.	1102	237721.377	2687528.843	5/8" Pin w/cap	142196	237707.908	2688134.336	5/8" PIN No Cap
537	237619.374	2688294.090	Strategic Pt.	1106	237672.407	2688267.107	5/8" Pin w/cap	142411	237714.082	2688223.881	5/8" Pin w/cap
539	237772.571	2687853.405	Strategic Pt.	1107	237680.192	2688251.551	5/8" Pin w/cap	142412	237704.399	2688214.536	5/8" Pin w/cap
540	237765.859	2687809.070	Strategic Pt.	1108	237684.460	2688253.708	5/8" Pin w/cap	142413	237707.861	2688197.835	5/8" Pin w/cap
541	237757.577	2687750.187	Strategic Pt.	1109	237657.850	2688241.573	5/8" Pin w/cap	142414	237711.893	2688199.890	5/8" PIN No Cap
542	237751.110	2687703.981	Strategic Pt.	1110	237654.307	2688238.279	5/8" Pin w/cap	142415	237714.936	2688183.999	5/8" Pin w/cap
543	237741.763	2687656.666	Strategic Pt.	1111	237709.386	2688204.839	5/8" Pin w/cap	142416	237721.475	2688171.295	5/8" PIN No Cap
544	237728.761	2687595.057	Set Netwk. Pt.	1112	237745.547	2688124.474	5/8" Pin w/cap	142479	237700.072	2688238.380	5/8" PIN No Cap
1088	237764.333	2687833.879	5/8" Pin w/cap	1113	237722.862	2688105.354	5/8" Pin w/cap	142485	237669.775	2688208.635	5/8" Pin w/cap
1089	237761.023	2687814.736	5/8" Pin w/cap	1114	237732.469	2688086.544	5/8" Pin w/cap				

LEGEND

- ★ Fd. Primary GCS Control, See Note at Symbol
- ▲ Set 5/8"x30" Pin w/2" Dia. Alum Cap Marked "ODOT CP (Pt. No.)" For Primary Network Control Point
- + Set 5/8"x30" Pin w/2" Dia. Alum Cap Marked "ODOT MAP (Pt. No.)" For Strategic Mapping Point
- Fd. Monument, See Note at Symbol
- Approximate Highway Centerline
- Approximate Property Boundary
- Approximate Right of Way
- Approximate Section Line
- Approximate Section Centerline
- Approximate Section Subdivisional Line
- Edge of Traveled Roadway

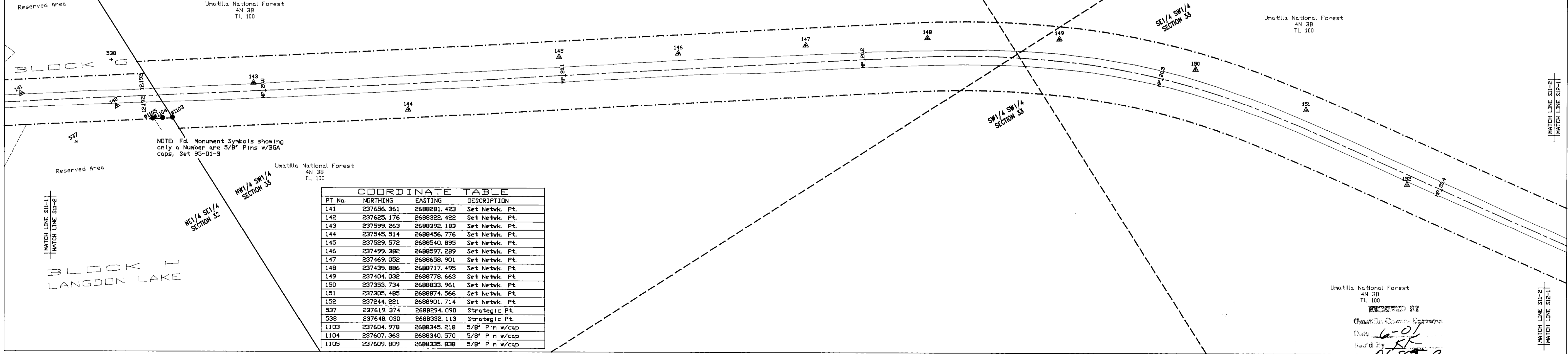
**Ferguson Surveying
Engineering**

P.O. Box 519, 210 E. Main
MT. VERNON, OR 97865
PHONE (541)932-4520
FAX (541)932-4430
EMAIL djse@highdesertnet.com

**MONUMENT RECOVERY SURVEY
TOLLGATE SECTION**
Weston - Elgin Highway (Route 204)
June 1999 - October 2000
Performed under contract with
OREGON DEPARTMENT OF TRANSPORTATION

<p>REGISTERED PROFESSIONAL LAND SURVEYOR</p> <p>OREGON JULY 12, 1969 DOUGLAS M. FERGUSON 548 RENEWAL DATE: 12/31/01</p>	<p>REGISTERED PROFESSIONAL LAND SURVEYOR</p> <p>OREGON JULY 13, 1999 KENNETH H. DELANO JR. 49865 RENEWAL DATE: 12/31/01</p>
---	---

SHEET 11 OF 12

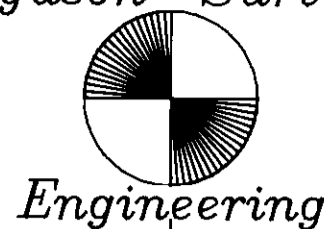


COORDINATE TABLE			
PT No.	NORTHING	EASTING	DESCRIPTION
141	237656.361	2688281.423	Set Netwk. Pt.
142	237625.176	2688322.422	Set Netwk. Pt.
143	237599.263	2688392.189	Set Netwk. Pt.
144	237545.514	2688456.776	Set Netwk. Pt.
145	237529.572	2688540.893	Set Netwk. Pt.
146	237499.382	2688597.289	Set Netwk. Pt.
147	237469.052	2688658.901	Set Netwk. Pt.
148	237439.886	2688717.495	Set Netwk. Pt.
149	237404.032	2688778.663	Set Netwk. Pt.
150	237353.734	2688833.961	Set Netwk. Pt.
151	237305.485	2688874.566	Set Netwk. Pt.
152	237244.221	2688901.714	Set Netwk. Pt.
537	237619.374	2688294.090	Strategic Pt.
538	237648.030	2688332.113	Strategic Pt.
1103	237604.978	2688345.218	5/8" Pin w/cap
1104	237607.363	2688340.570	5/8" Pin w/cap
1105	237609.809	2688335.838	5/8" Pin w/cap

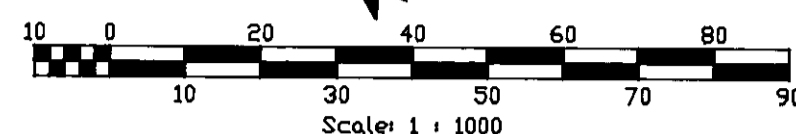
Umatilla National Forest
4N 38
TL 100

Checked by
Date 6-01
Drawn by SK
01-88-C

Ferguson Surveying

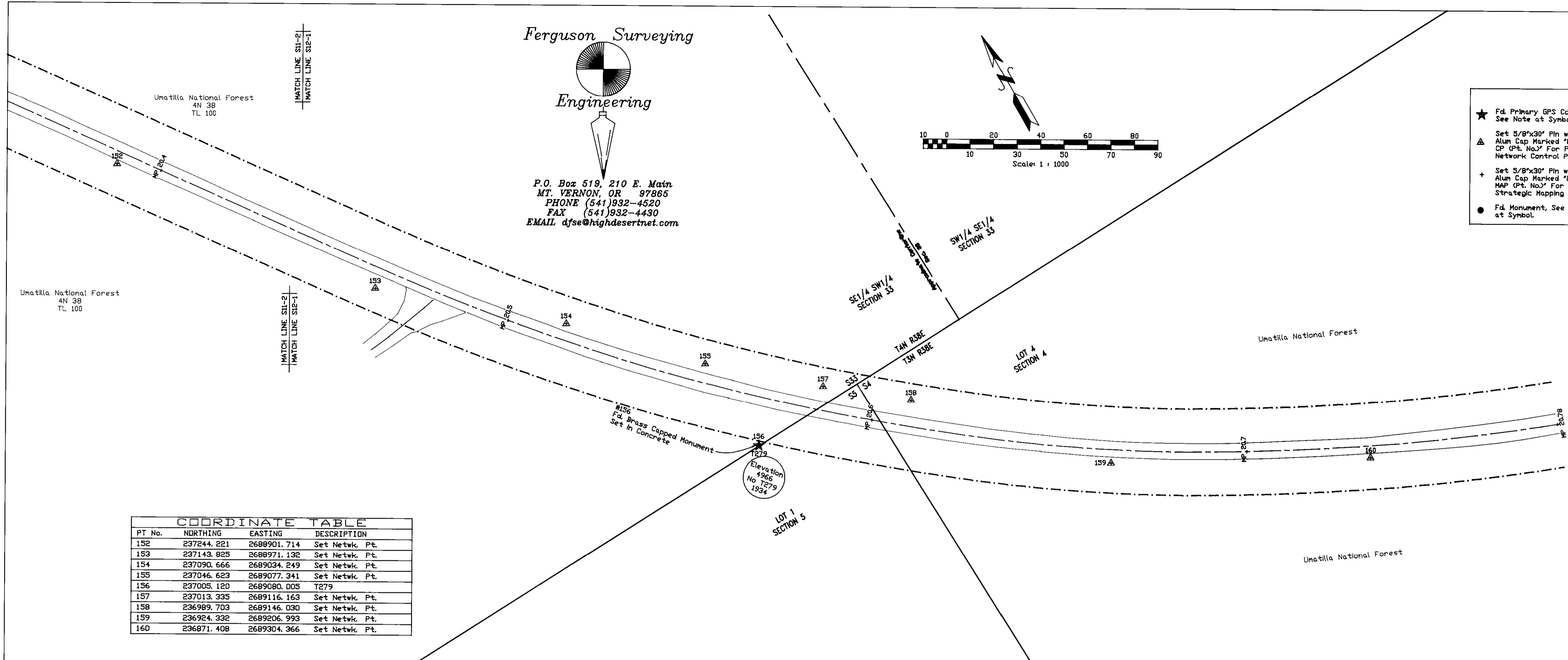


P.O. Box 519, 210 E. Main
 MT. VERNON, OR 97865
 PHONE (541) 932-4520
 FAX (541) 932-4430
 EMAIL: dfse@highdesertnet.com



LEGEND

★ Fd Primary GPS Control, See Note at Symbol	— Approximate Highway Centerline
△ Set 5/8"x30" Pin w/2" Dia. Alum Cap Marked "DDDT" CP (Pt. No.) For Primary Network Control Point	- - - - - Approximate Property Boundary
+ Set 5/8"x30" Pin w/2" Dia. Alum Cap Marked "DDDT" MAP (Pt. No.) For Strategic Mapping Point	- · - · - Approximate Right of Way
● Fd Monument, See Note at Symbol	— Approximate Section Line
	- - - - - Approximate Section Centerline
	- · - · - Approximate Section Subdivisional Line
	— Edge of Traveled Roadway



COORDINATE TABLE

PT No.	NDRTHING	EASTING	DESCRIPTION
152	237244.221	2688901.714	Set Netwk. Pt.
153	237143.825	2688971.132	Set Netwk. Pt.
154	237090.666	2689034.249	Set Netwk. Pt.
155	237046.623	2689077.241	Set Netwk. Pt.
156	237005.120	2689080.005	T279
157	237013.335	2689116.163	Set Netwk. Pt.
158	236989.703	2689146.030	Set Netwk. Pt.
159	236924.332	2689206.993	Set Netwk. Pt.
160	236871.408	2689304.366	Set Netwk. Pt.

MONUMENT RECOVERY SURVEY
TOLLGATE SECTION
 Weston - Elgin Highway (Route 204)
 June 1999 - October 2000
 Performed under contract with
 OREGON DEPARTMENT OF TRANSPORTATION

REGISTERED PROFESSIONAL LAND SURVEYOR OREGON JULY 12, 1969 DOUGLAS M. FERGUSON 848 RENEWAL DATE: 12/31/01	REGISTERED PROFESSIONAL LAND SURVEYOR OREGON JULY 12, 1999 KENNETH H. DELANO JR. 49865 RENEWAL DATE: 12/31/01
---	---

RECEIVED BY
 Umatilla County Treasurer
 Date 6-01
 Rec'd by DK
 No. 01-88-C