

# RECORD OF SURVEY

SECTIONS 14 THROUGH 18, AND SECTIONS 20, 21 AND 24.  
TOWNSHIP 5 NORTH, RANGE 28 EAST, W.M.,  
UMATILLA COUNTY, OREGON.  
MAY, 1998

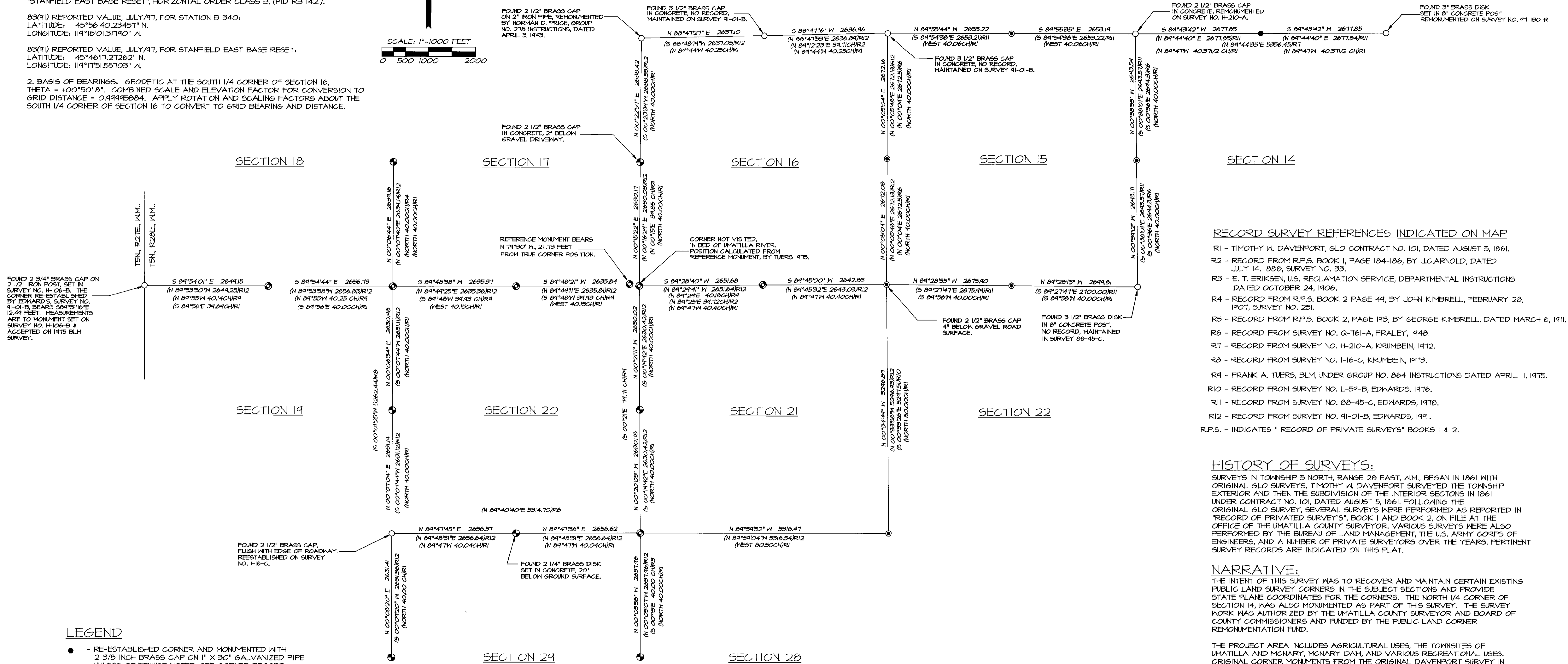
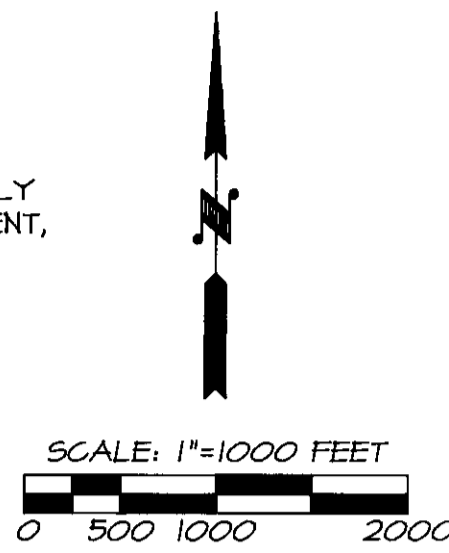
## NOTES

1. STATE PLANE COORDINATE VALUES REPORTED ON CORNER RECORDS FILED SEPARATELY ARE BASED ON A GPS CONTROL TRAVERSE CONSTRAINED BY LEAST SQUARES ADJUSTMENT, HOLDING STATION B 340, HORIZONTAL ORDER CLASS B, (PID RB 0640) AND STATION "STANFIELD EAST BASE RESET", HORIZONTAL ORDER CLASS B, (PID RB 1421).

83(91) REPORTED VALUE, JULY/91, FOR STATION B 340:  
LATITUDE: 45°56'40.28451" N.  
LONGITUDE: 119°18'01.31790" W.

83(91) REPORTED VALUE, JULY/91, FOR STANFIELD EAST BASE RESET:  
LATITUDE: 45°46'17.27262" N.  
LONGITUDE: 119°17'51.55103" W.

2. BASIS OF BEARINGS: GEODETIC AT THE SOUTH 1/4 CORNER OF SECTION 16, THETA = +00°50'18". COMBINED SCALE AND ELEVATION FACTOR FOR CONVERSION TO GRID DISTANCE = 0.99995884. APPLY ROTATION AND SCALING FACTORS ABOUT THE SOUTH 1/4 CORNER OF SECTION 16 TO CONVERT TO GRID BEARING AND DISTANCE.



- ### RECORD SURVEY REFERENCES INDICATED ON MAP
- R1 - TIMOTHY W. DAVENPORT, GLO CONTRACT NO. 101, DATED AUGUST 5, 1861.
  - R2 - RECORD FROM R.P.S. BOOK 1, PAGE 184-186, BY J.C. ARNOLD, DATED JULY 14, 1888, SURVEY NO. 33.
  - R3 - E. T. ERIKSEN, U.S. RECLAMATION SERVICE, DEPARTMENTAL INSTRUCTIONS DATED OCTOBER 24, 1906.
  - R4 - RECORD FROM R.P.S. BOOK 2 PAGE 44, BY JOHN KIMBRELL, FEBRUARY 28, 1907, SURVEY NO. 251.
  - R5 - RECORD FROM R.P.S. BOOK 2, PAGE 193, BY GEORGE KIMBRELL, DATED MARCH 6, 1911.
  - R6 - RECORD FROM SURVEY NO. Q-761-A, FRALEY, 1948.
  - R7 - RECORD FROM SURVEY NO. H-210-A, KRUMBEIN, 1972.
  - R8 - RECORD FROM SURVEY NO. 1-16-C, KRUMBEIN, 1973.
  - R9 - FRANK A. TUEBS, BLM, UNDER GROUP NO. 864 INSTRUCTIONS DATED APRIL 11, 1975.
  - R10 - RECORD FROM SURVEY NO. L-59-B, EDWARDS, 1976.
  - R11 - RECORD FROM SURVEY NO. 88-45-C, EDWARDS, 1978.
  - R12 - RECORD FROM SURVEY NO. 91-01-B, EDWARDS, 1991.
- R.P.S. - INDICATES "RECORD OF PRIVATE SURVEYS" BOOKS 1 & 2.

### HISTORY OF SURVEYS:

SURVEYS IN TOWNSHIP 5 NORTH, RANGE 28 EAST, W.M., BEGAN IN 1861 WITH ORIGINAL GLO SURVEYS. TIMOTHY W. DAVENPORT SURVEYED THE TOWNSHIP EXTERIOR AND THEN THE SUBDIVISION OF THE INTERIOR SECTIONS IN 1861 UNDER CONTRACT NO. 101, DATED AUGUST 5, 1861. FOLLOWING THE ORIGINAL GLO SURVEY, SEVERAL SURVEYS WERE PERFORMED AS REPORTED IN "RECORD OF PRIVATE SURVEYS", BOOK 1 AND BOOK 2, ON FILE AT THE OFFICE OF THE UMATILLA COUNTY SURVEYOR. VARIOUS SURVEYS WERE ALSO PERFORMED BY THE BUREAU OF LAND MANAGEMENT, THE U.S. ARMY CORPS OF ENGINEERS, AND A NUMBER OF PRIVATE SURVEYORS OVER THE YEARS. PERTINENT SURVEY RECORDS ARE INDICATED ON THIS PLAT.

### NARRATIVE:

THE INTENT OF THIS SURVEY WAS TO RECOVER AND MAINTAIN CERTAIN EXISTING PUBLIC LAND SURVEY CORNERS IN THE SUBJECT SECTIONS AND PROVIDE STATE PLANE COORDINATES FOR THE CORNERS. THE NORTH 1/4 CORNER OF SECTION 14 WAS ALSO MONUMENTED AS PART OF THIS SURVEY. THE SURVEY WORK WAS AUTHORIZED BY THE UMATILLA COUNTY SURVEYOR AND BOARD OF COUNTY COMMISSIONERS AND FUNDED BY THE PUBLIC LAND CORNER REMONUMENTATION FUND.

THE PROJECT AREA INCLUDES AGRICULTURAL USES, THE TOWNSITES OF UMATILLA AND MCNARY, MCNARY DAM, AND VARIOUS RECREATIONAL USES. ORIGINAL CORNER MONUMENTS FROM THE ORIGINAL DAVENPORT SURVEY IN 1861 ARE VIRTUALLY OBLITERATED, BUT MANY PUBLIC LAND SURVEY CORNERS HAVE BEEN PERPETUATED BY LATER GOVERNMENT AND PRIVATE SURVEYS. THE U.S. ARMY CORPS OF ENGINEERS HAVE MADE NUMEROUS SURVEYS OVER THE YEARS AND SOME LOCATION INFORMATION WAS OBTAINED FROM THE CORPS. MOST CORPS SURVEY DATA IS NOT FILED FOR RECORD. A THOROUGH SEARCH FOR RECORD SURVEY DATA WAS MADE AT THE OFFICE OF THE COUNTY SURVEYOR AS PART OF THIS SURVEY.

THE CONTROL SURVEY WAS MADE WITH A LEICA 399 DUAL FREQUENCY GLOBAL POSITIONING SYSTEM, USING STATIC POSITIONING METHODS. THE STANDARD PROCEDURE WAS TO SURVEY TO KNOWN CORNERS WITH STATIC SESSIONS FROM TWO BASE STATION POSITIONS. RE-ESTABLISHED CORNERS WERE SET BY RE-ESTABLISHED BY TIME METHODS AND VERIFIED BY SEPARATE OBSERVATIONS. NEW CORNER ACCESSORIES WERE MEASURED WITH COMPASS AND STEEL TAPE.

## LEGEND

- - RE-ESTABLISHED CORNER AND MONUMENTED WITH 2 3/8 INCH BRASS CAP ON 1" X 30" GALVANIZED PIPE UNLESS OTHERWISE NOTED. SEE CORNER RECORD FILED SEPARATELY.
- ⊕ - FOUND 2 3/8 INCH BRASS CAP ON 1" IRON PIPE, UNLESS OTHERWISE NOTED, PER SURVEY NO. 91-01-B. SEE CORNER RECORD FILED SEPARATELY.
- ⊙ - FOUND 2 3/8 INCH BRASS CAP ON 1" IRON PIPE, UNLESS OTHERWISE NOTED, PER SURVEY NO. 88-45-C. SEE CORNER RECORD FILED SEPARATELY.
- ⊗ - FOUND 3 1/4 INCH BRASS CAP ON 2 1/2" IRON POST, BUREAU OF LAND MANAGEMENT, FRANK A. TUEBS, UNDER GROUP NO. 864, INSTRUCTIONS DATED APRIL 11, 1975. SEE CORNER RECORD FILED SEPARATELY.
- - FOUND CORNER MONUMENT AS NOTED. SEE CORNER RECORD FILED SEPARATELY.

### LAND CORNER RECORD FORMS:

THE LAND CORNER RECORD FORMS, FILED SEPARATELY, CONTAIN EXPLANATIONS, HISTORIES, AND METHODS OF RE-ESTABLISHMENT, REMONUMENTATION AND MAINTENANCE FOR CORNERS VISITED ON THIS SURVEY. THE LAND CORNER RECORDS SHOULD BE CONSULTED FOR SPECIFIC INFORMATION ON EACH CORNER.

REGISTERED PROFESSIONAL LAND SURVEYOR  <i>William R. Wells</i> OREGON JULY 22, 1977 WILLIAM R. WELLS 1108 RENEWS 6/30/98	WILLIAM R. WELLS, PLS 357 N.E. HWY. 11 P.O. BOX 1696 PENDELTON, OR 97801 PHONE: (541) 276-6362	PROJECT: SURVEY FOR: UMATILLA COUNTY  LOCATED IN SECTIONS 14 THROUGH 18, 20, 21, AND 24, TOWNSHIP 5 NORTH, RANGE 28 EAST, W.M., UMATILLA COUNTY, OREGON
	DATE: MARCH 98 DR. BY: JCL CK. BY: HFSH NO: 48-485	

Umatilla County Surveyor  
 Date: 5-98  
 Rec'd by: [Signature]  
 No. 98-1825-AT